

# GENERAL PURPOSE VALVES



**Note:** This valve also available as an operator. Refer to following page.

## Series 20 >> Model 23

### 3-Way Normally Closed — Piped Exhaust

A complete line of valves with a great selection of options and exceptional proven performance. The standard in the field. Air, water, and other fluids are compatible with standard Buna seals. Hot water, steam, gasoline, and many oils require other seal materials.

- The flagship valve initially created for fluid power industry.
- Heavy duty and made of stainless steel.
- A real workhorse with proven performance.
- It has the greatest amount of options available of all the valves.
- Wide range of orifice sizes from 1/32" to 1/4".

## OPERATING CONDITIONS

**Media:** Air, water, and other fluids are compatible with standard Buna seals. Hot water, steam, gasoline, and many oils require other seal materials. (Series 20 pressure ratings may change due to the viscosity of the liquid.)\*

**Valve Temperature Range:** Standard Valves - 0°F (-18°C) to 104°F (40°C) ambient; 0°F (-18°C) to 150°F (65°C) media. Optional Valves - can tolerate much higher or much lower ambient and media temperatures.

**Maximum Operating Pressure Differentials:** See table on next page.

**Burst Pressure:** 5,000 PSI

**Leakage:** Bubble tight for standard valves.

**Vacuum:** To 5 Microns\*

## ELECTRICAL CHARACTERISTICS

**Coil Voltage:** 6 to 825/60, 5 to 720/50 and 1.8 to 265/DC

**Nominal Power:** AC — 8.7 Watts, DC — 9.5 Watts

**Coil Construction:** Molded (Std.), Non-molded Class A and potted Class F (Class H optional)

**Typical Response Time on Air:** 4 - 16 Milliseconds

**Operating Speed:** Up to 600 CPM

**Duty Cycle:** Continuous

## MECHANICAL CHARACTERISTICS

**Body:** Stainless Steel (Std.) or Brass (Opt.)

**Internal Components:** Stainless Steel. Copper - AC Only.

**Elastomers:** Nitrile (Buna) (Std.). Many other elastomers available.\*

**Orifice Diameter:** See table on next page.

**Porting:** Standard 1/8" and 1/4" NPT (other ports available).\*

**Housing:** Grommet and 1/2" NPT conduit - many options available.\*

**Listings:** Most valves are UL and CSA listed.\*

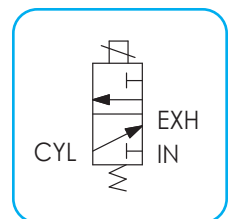
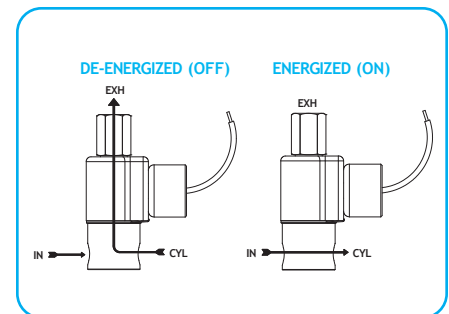
**Life Expectancy:** Millions of cycles, depending on application, lubrication, etc.

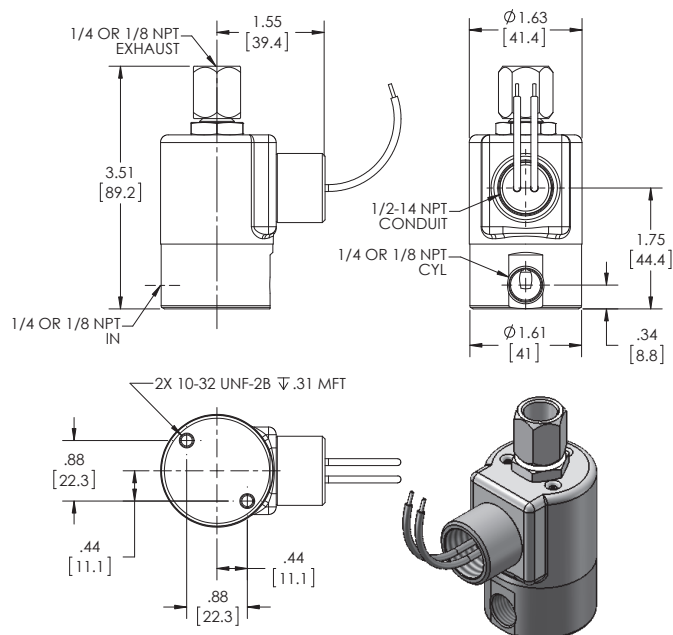
**Valve Weight:** Grommet Valve: 1.13 lb Conduit Valve: 1.19 lb

**Repair Packs:** See table on next page.

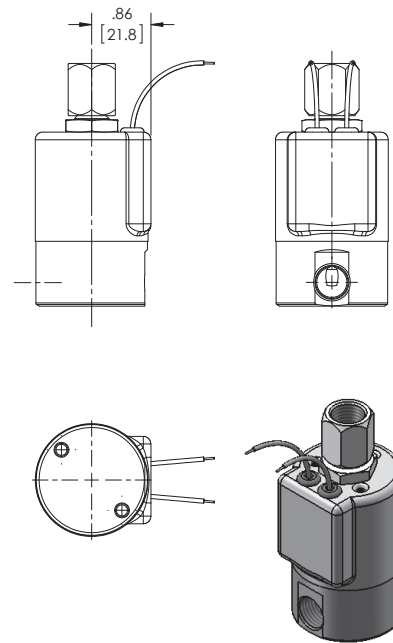
**Options:** Alternate Port Locations, Metering, Manual Override, Alternate Elastomers, Spade Terminal Coil, European Style DIN, Explosion Proof and Magnetic Latching Coil

\* Consult representative or factory for options and specifications.





**SERIES 20  
MODEL 23  
3WNC PIPED EXHAUST  
CONDUIT CONNECTION**



**SERIES 20  
MODEL 23  
3WNC PIPED EXHAUST  
GROMMET HOUSING WITH LEADS**

## VALVE SPECIFICATIONS

MAX. OPER. PRESS. DIFF. +		ORIFICE SIZE		CV FACTOR		VALVE NUMBER			
AC	DC	N.C.	N.O.	N.C.	N.O.	GROMMET HOUSING		CONDUIT HOUSING	
						1/8 NPT PORTS	1/4 NPT PORTS	1/8 NPT PORTS	1/4 NPT PORTS
400	400	1/32	1/32	.024	.024	23GG7XGM	23GG9ZGM	23GG7XCM	23GG9ZCM
150 (200)	150 (200)	3/64	1/16	.052	.095	23HJ7XGM	23HJ9ZGM	23HJ7XCM	23HJ9ZCM
100 (135)	100 (135)	1/16	1/16	.095	.095	23JJ7XGM	23JJ9ZGM	23JJ7XCM	23JJ9ZCM
100 (135)	100 (135)	1/16	3/32	.095	.156	23JK7XGM	23JK9ZGM	23JK7XCM	23JK9ZCM
75 (100)	75 (100)	3/32	3/32	.156	.156	23KK7XGM	23KK9ZGM	23KK7XCM	23KK9ZCM
50 (70)	50 (70)	1/8	3/32	.284	.156	23NK7XGM	23NK9ZGM	23NK7XCM	23NK9ZCM
35 (40)	35 (40)	1/8	1/8	.284	.201	23NN7XGM^	23NN9ZGM^	23NN7XCM^	23NN9ZCM^
20	20	3/16	3/32	.500	.156	23PK7XGM	23PK9ZGM	23PK7XCM	23PK9ZCM
20	20	3/16	1/8	.500	.201	23PN7XGM^	23PN9ZGM^	23PN7XCM^	23PN9ZCM
15	—	1/4	3/32	.700	.156	23RK7XGM	23RK9ZGM	23RK7XCM	23RK9ZCM
15	—	1/4	1/8	.700	.201	23RN7XGM^	23RN9ZGM^	23RN7XCM^	23RN9ZCM^

^ VALVES WITH 1/8 N.O. ORIFICE ARE UL LISTED ONLY

+ Ratings in brackets are optional extended ratings; consult factory.

## ORDERING INFORMATION:

WHEN ORDERING VALVES OR REPAIR PACKS ADD VOLTAGE AND FREQUENCY TO COMPLETE VALVE NUMBER. EXAMPLES: VALVE (23JK9ZGM 120/60) REPAIR PACK (K23JKX AC)

WHEN ORDERING OPERATORS ADD THE LETTER "O" TO THE FRONT OF THE VALVE NUMBER, REPLACE BODY PORT NUMBER WITH THE LETTER "D": EXAMPLE: OPERATOR (O23JK9DGM 120/60)