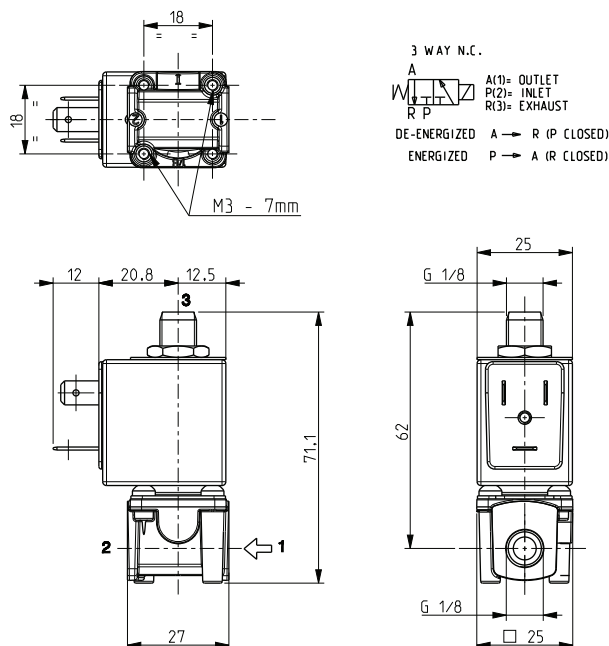


ASCO™ SOLENOID VALVE

3/2 NORMALLY CLOSED – DIRECT ACTING - G 1/8

SERIES
L377-V05C



General Features

Direct acting solenoid valve, small body size,
Suitable for pneumatic and hydraulic circuits and to operate single-acting cylinders.
Suitable to shut off liquid and gaseous fluids (verify the compatibility of fluid with material in contact)

Technical Features	
Maximum allowable pressure (PS)	30 bar
Opening time	~15ms
Closing time	~15ms
Fluid temperature	0°C +130°C
Max viscosity	5°E (~37 cStokes or mm ² /s)

Materials in Contact with Fluid	
Body	Brass
Sealing	FPM
Internal components	Stainless steel
Seat	Brass or Stainless steel
Guide assembly	Stainless steel
Shading coil	Copper

Coil		
Continuous duty	ED 100%	
Encapsulation material	PET (polyethylene terephthalate) fiberglass reinforced	
Insulation class	F (155°C)	
Ambient temperature	-10°C +60°C	
Electric connections	DIN 46340 - 3 poles connectors	
Protection degree	IP 65 (EN 60529)	
Voltages	DC	12-24V (+10% -5%)
	AC	24V/50-60Hz - 110V/50-60Hz (120V/60Hz)
		230V/50-60Hz (+10% -15%) (Other voltages and frequencies on request)

Port size ISO 228	Orifice size (mm)	Differential pressure (bar)				Kv (m³/h)	Series and type		Power absorption			Sealings	Notes	Weight (kg)
		Δp min	Δp max											
			Gases		Liquids									
			AC	DC	AC		DC	Valve	Coil	AC (VA)				
Inrush	Holding													
G 1/8	1,6	0	10	10	8	8	L377V05C	Z610A	16	10	6	FPM	1 -2	0,170
	2,3		3	3	3	3								

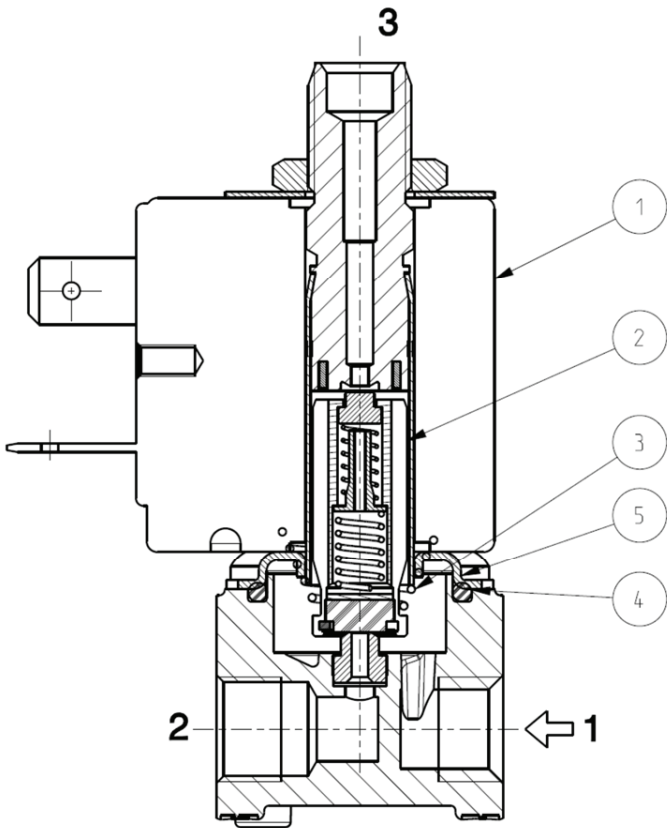
Notes

- Sealings: FPM = Fluoro carbon elastomer
- In case of disassembling of the coil, the fixing bolt has to be tightened at 3 Nm max. torque
- 1 - Upper exhaust (3) with seat diameter 1,6 mm.
- 2 - Solenoid valve with stainless steel seat

SERIES
L377-V05C

ASCO™ SOLENOID VALVE
3/2 NORMALLY CLOSED – DIRECT ACTING - G 1/8

Spare Parts



Kit description	Diameter	Kit P.N.	Consisting of:
Core kit	Ø1,6	G2934702	Core pos.2
	Ø2,3	G2934902	O-Ring guide assembly pos.4
Core return spring kit	Ø1,6	G2926801	N.10 core return spring pos.3
	Ø2,3	G2927101	
O-Ring guide assembly kit		GU2424000017	N.10 O-Ring guide assembly kit pos.4
Guide assembly		2973101R	Guide assembly pos.5
Coil		Z610A	Coil pos.1

Installation

- Solenoid valve can be mounted in any position; vertical with coil upwards preferred.

THE VALIDITY OF REPORTED DATA IS REFERRED TO THE DATE OF ISSUE. POSSIBLE UPDATES ARE AVAILABLE ON REQUEST