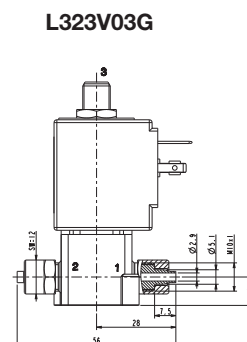
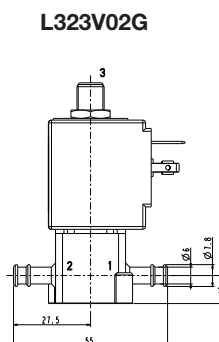
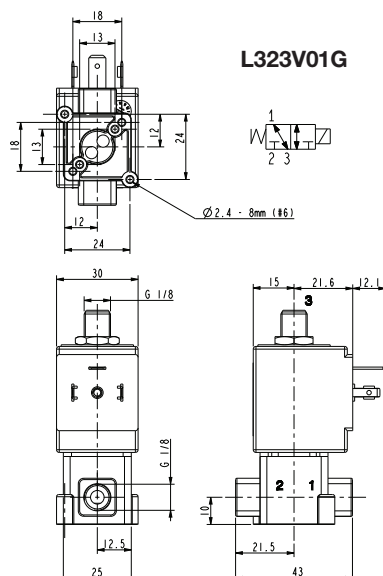


3/2 U (UNIVERSAL SERVICE) – DIRECT ACTING - G 1/8 - BARBED PORTS

**SERIES**  
**L323**



## General Features

Direct acting solenoid valve.

Suitable to shut off liquid and gaseous fluids; suitable for low pressure steam and applications in sterilising autoclaves (verify the compatibility of fluid with materials in contact).

## Technical Features

Maximum allowable pressure (PS)	10 bar
Opening time	~20ms
Closing time	~20ms
Fluid temperature	0°C +130°C
Max viscosity	5°E (~37 cStokes or mm²/s)

## Approvals

UL (Class F) approval – for UL cl.H: ZA34 (E153691)

IMQ CSV approval, see ZA10 data sheet for further details

Compliant with MD 174/2004 and Reg. CE 1935/2004



### Materials in Contact with Fluid

Materials in Contact with Fluid	
Body	PPS
Sealing	FPM
Internal components	Stainless steel
Seat	PPS
Guide assembly	Stainless steel
Shading ring	Copper

## Coil

Continuous duty		ED 100%
Encapsulation material		PPS (Polyphenylsulfure) fiberglass reinforced
Insulation class		F (155°C) on request class H (180°C)
Ambient temperature		-10°C +50°C
Electric connections		DIN 46340 - 3 poles connectors (EN175301-803)
Protection degree		IP 67 (EN 60529) with plug connector
Voltages	DC	<b>ZA10G:</b> 12-24V (+10% -5%)
	AC	<b>ZA10A:</b> 24V/50Hz - 110V/50Hz (120V/60Hz) - 230V/50Hz (+10% -15%)
		(Other voltages and frequencies on request)

Port size G=ISO 228	Orifice size (mm)	Differential pressure (bar)				Kv (m³/h)	Series and type		Power absorption			Sealings	Notes	Weight (kg)	
		Δp min	Δp max												
			Gases		Liquids		Valve	Coil	AC (VA)		DC (W)				
			AC	DC	AC				DC	Inrush					Holding
G 1/8	2,3	0	4	-	4	-	0,2	L323V01G	ZA10A	23	14	-	FPM	1 – 2 - 3	0,230
			-	4	-	4			ZA10G	-	-	12			
Barbed ports			4	-	4	-		L323V02G	ZA10A	23	14	-		2 -3	
			-	4	-	4			ZA10G	-	-	12			
Barbed ports with ring nut			4	-	4	-	0,12	L323V03G	ZA10A	23	14	-		2 – 3 - 4	
			-	4	-	4			ZA10G	-	-	12			

## Notes

- Sealings : FPM = Fluoro-carbon elastomer
- IMQ CSV approval, see ZA10 datasheet for further details

1 - Maximum driving torque of the pipe fittings for thread connections = 2Nm

2 - Only for use with steam, consider following values: PSmax 2,8 bar (max fluid temperature 130°C)

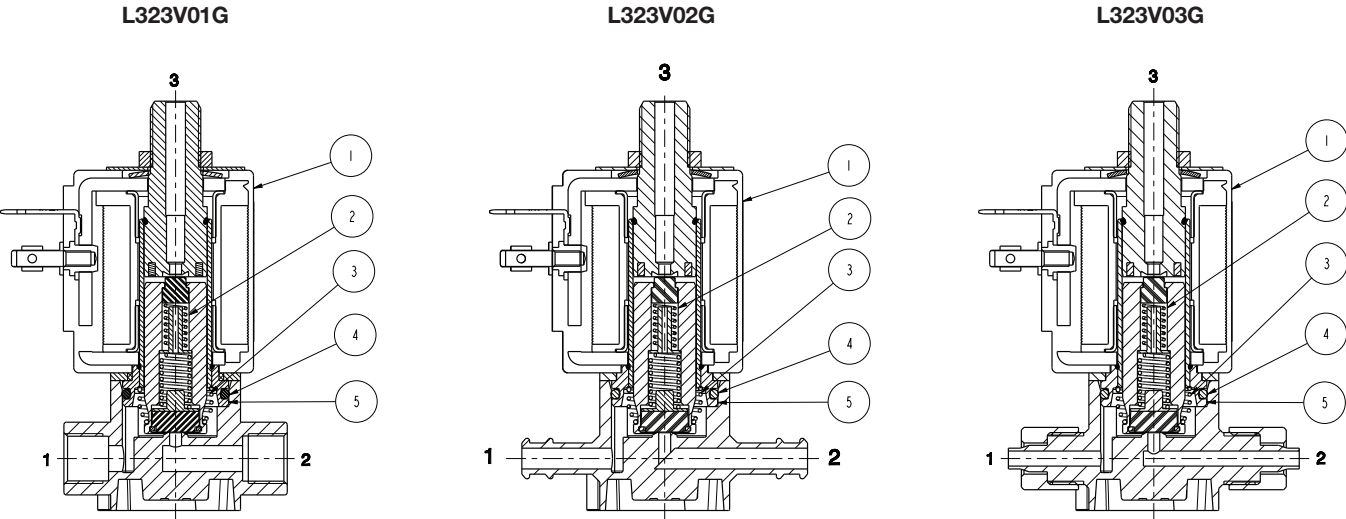
3 - The pressure values shown in the table refer to the potential of the valve: they can be lower depending on the connection system used

4 - Maximum driving torque of ring nut 1,2Nm

SERIES  
**L323**

**ASCO™ SOLENOID VALVE**  
3/2 U (UNIVERSAL SERVICE) – DIRECT ACTING - G 1/8 - BARBED PORTS

Spare Parts



Kit description	Kit P.N.	Consisting of:
Core kit	G3065101	Core pos. 2
Core return spring kit	G3022401	N.10 core return spring pos. 3
O-Ring guide assembly kit	GU2428000017	N.10 O-Ring guide assembly pos. 4
Guide assembly	290564-001R	Guide assembly pos. 5
Coil	ZA10A ZA10G	Coil pos. 1

Installation

- Solenoid valve can be mounted in any position; vertical with coil upwards preferred.
- When using any sealant for fittings, please check its chemical compatibility with body material (PPS).
- In case of disassembling for usual maintenance, the fixing screws of the guide assembly have to be tightened with 0,6÷0,7 Nm torque.

THE VALIDITY OF REPORTED DATA IS REFERRED TO THE DATE OF ISSUE. POSSIBLE UPDATES ARE AVAILABLE ON REQUEST