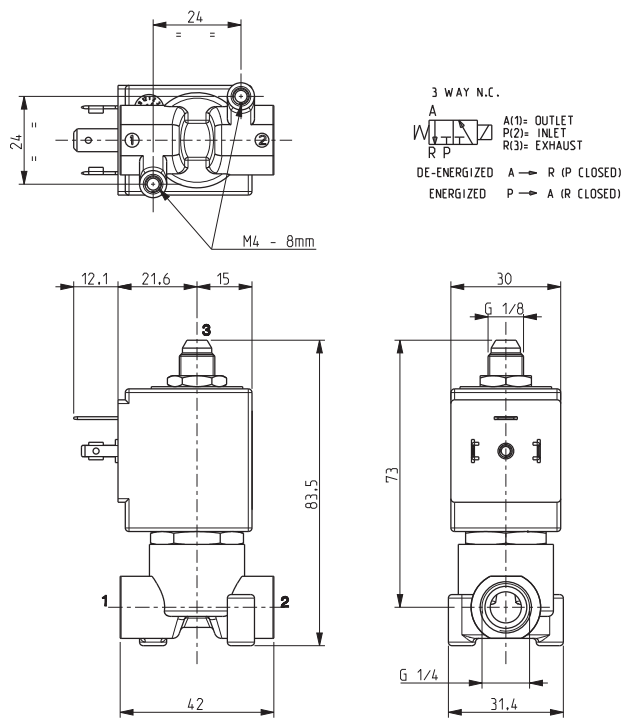


# ASCO™ SOLENOID VALVE

## 3/2 NORMALLY CLOSED – DIRECT ACTING - G 1/4

**SERIES**  
**L321-V04C**



### General Features

Direct acting solenoid valve, complying with NSF standards.

Suitable to shut off liquid and gaseous fluids (verify the compatibility of fluid with materials in contact).

### Technical Features

Maximum allowable pressure (PS)	40 bar
Opening time	~20ms
Closing time	~20ms
Fluid temperature	0°C +130°C
Max viscosity	5°E (~37 cStokes or mm²/s)

### Materials in Contact with Fluid

Body	Chemically nickel plated brass (Ni-P)
Sealing	FPM (FDA homologated compound)
Internal components	Stainless steel
Seat	Stainless steel
Guide assembly	Stainless steel
Shading ring	Copper

### Coil

Approval	UL (class F) – for UL cl.H: ZA34	
Continuous duty	ED 100%	
Encapsulation material	PPS (Polyphenilsulfure) fiberglass reinforced	
Insulation class	F (155°C) on request class H (180°C)	
Ambient temperature	-10°C +50°C	
Electric connections	DIN 46340 - 3 poles connectors (EN 175301-803)	
Protection degree	IP 67 (EN 60529) with plug connector	
Voltages	DC	<b>ZA10G:</b> 12-24V (+10% -5%)
	AC	<b>ZA10A:</b> 24V/50Hz - 110V/50Hz (120V/60Hz) - 230V/50Hz (+10% -15%)
		(Other voltages and frequencies on request)

Port size ISO 228	Orifice size (mm)	Differential pressure (bar)				Kv (m³/h)	Series and type		Power absorption			Sealings	Notes	Weight (kg)	
		Δp min	Δp max						AC (VA)		DC (W)				
			Gases		Liquids		Inrush	Holding							
			AC	DC	AC				DC						
G 1/4	4,4	0	2,5	-	2,5	-	0,3	L321V04C	ZA10A	23	14	-	FPM	-	0,300
			-	2,5	-	2,5			ZA10G	-	-	12			

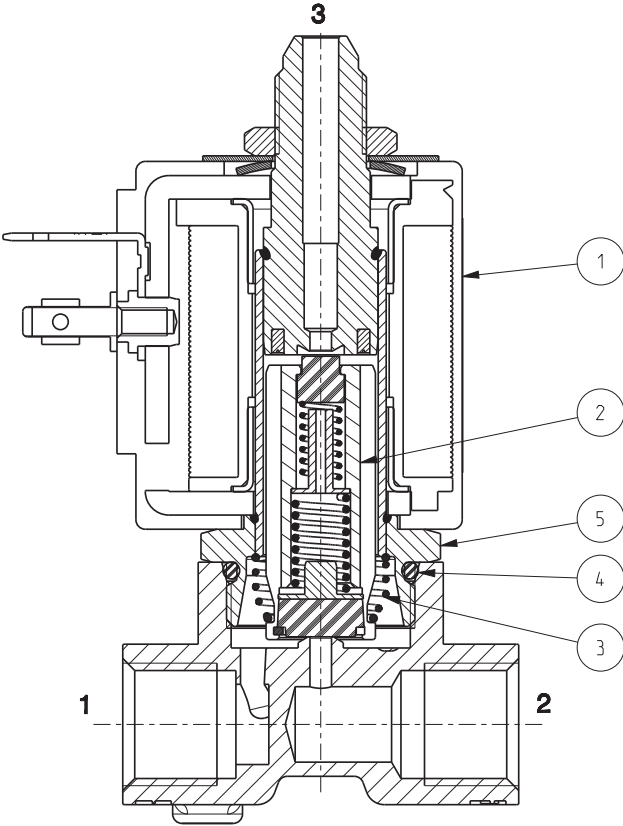
### Notes

- Sealings : FPM = Fluoro-carbon elastomer (FDA homologated compound)
- Upper exhaust (3) with seat diameter 2,3 mm
- IMQ CSV approval, see ZA10 datasheet for further details
- UL approved coil (E153691)

SERIES  
**L321-V04C**

**ASCO™ SOLENOID VALVE**  
3/2 NORMALLY CLOSED – DIRECT ACTING - G 1/4

Spare Parts



Kit description	Kit P.N.	Consisting of:
Core kit	G3038404	Core pos. 2
Core return spring kit	G3065701	N.10 core return spring pos. 3
OR guide assembly kit	GU2424000017	N.10 OR guide assembly pos. 4
Guide assembly	297779-001R	Guide assembly pos. 5
Coil	ZA10A ZA10G	Coil pos. 1

Installation

- Solenoid valve can be mounted in any position; vertical with coil upwards preferred.

THE VALIDITY OF REPORTED DATA IS REFERRED TO THE DATE OF ISSUE. POSSIBLE UPDATES ARE AVAILABLE ON REQUEST