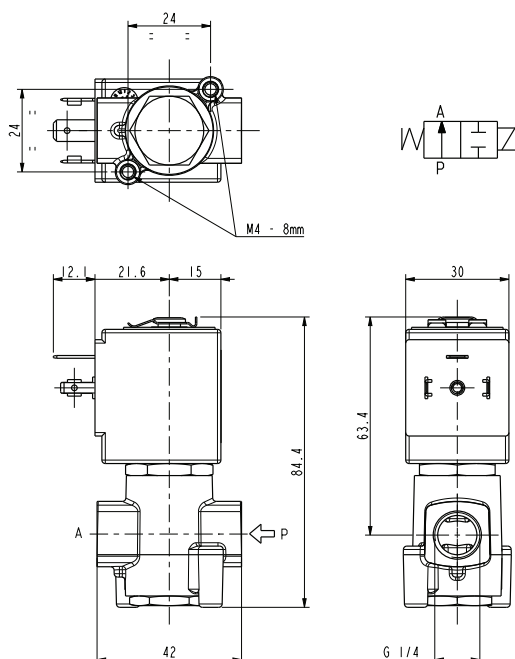


ASCO™ SOLENOID VALVE

2/2 NORMALLY OPEN – DIRECT ACTING - G 1/4

SERIES
L256-V



General Features

Direct acting solenoid valve, suitable for vacuum at port "P" (PA – PP = max 1 bar)

Suitable to shut off liquid and gaseous fluids; particularly suitable in the applications in sterilising autoclaves (verify the compatibility of fluid with materials in contact).

Technical Features

Maximum allowable pressure (PS)	40 bar
Opening time	~20ms
Closing time	~20ms
Fluid temperature	0°C +130°C (FPM)
Max viscosity	5°E (~37 cStokes or mm²/s)

Materials in Contact with Fluid

Body	Brass or chemically nickel coated (Ni-P) brass
Sealing	FPM
Internal components	Stainless steel
Seat	Stainless steel
Core tube	Stainless steel
Shading coil	Copper

Coil

Approval	UL (class F) – for UL cl.H: ZA34 (E153691)	
Continuous duty	ED 100%	
Encapsulation material	PPS (Polyphenilsulfure) fiberglass reinforced	
Insulation class	F (155°C) on request class H (180°C)	
Ambient temperature	-10°C +50°C	
Electric connection	DIN 46340 - 3 poles connectors (DIN 43650)	
Protection degree	IP 67 (EN 60529) with plug connector	
Voltages	DC	12-24V (+10% -5%)
	AC	24V/50Hz - 110V/50Hz (120V/60Hz) - 230V/50Hz (+10% -15%)
		(Other voltages and frequencies on request)

Port size ISO 228	Orifice size (mm)	Differential pressure (bar)					Kv (m³/h)	Series and type		Power absorption			Sealings	Notes	Weight (kgs)
		Δp min	Δp max												
			Gases		Liquids										
			AC	DC	AC	DC									
G 1/4	3,2	0	4	4	4	4	0,30	L256V12	ZA10A	23	14	9	FPM	1	0,340
								L256V14						1 – 2	
	4,5		2.5	2.5	2.5	2.5	0.45	L256V12						-	

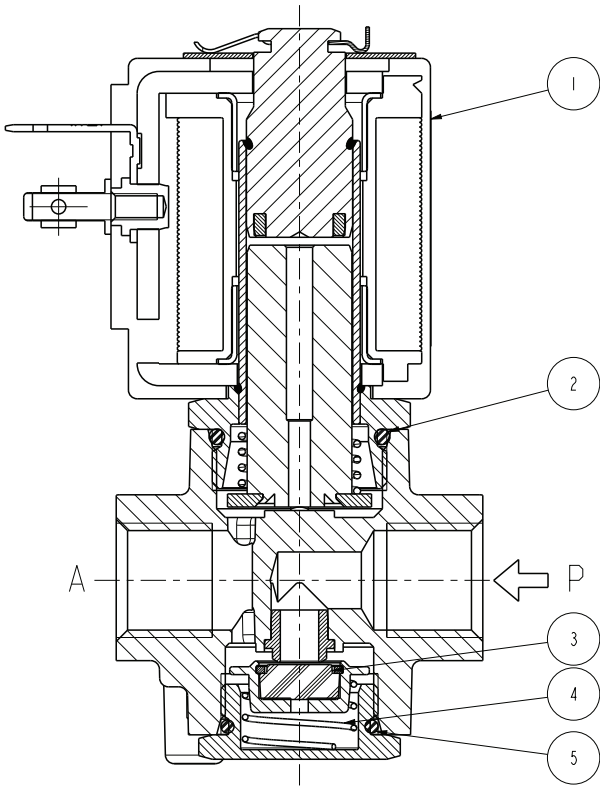
Notes

- Sealings : FPM = Fluoro-carbon elastomer
- IMQ CSV approval, see ZA10 datasheet for further details
- 1 - Only for use with steam, consider following values: max pressure 2,8 bar (max fluid temperature 130°C).
- 2 - Chemically nickel coated (Ni-P) brass body.

SERIES
L256-V

ASCO™ SOLENOID VALVE
2/2 NORMALLY OPEN – DIRECT ACTING - G 1/4

Spare Parts



Kit description	Kit P.N.	Consisting of:
Sealing assembly kit	G3124301	Sealing group pos.3 Sealing return spring pos.4 OR cap pos. 5
OR guide assembly kit	GU2424000017	N°.10 OR guide assembly pos. 2
OR cap kit	GU2424000155	N°.10 OR cap pos.5
Coil	ZA10A	Coil pos.1

Installation

- Solenoid valve can be mounted in any position; vertical with coil upwards preferred.

THE VALIDITY OF REPORTED DATA IS REFERRED TO THE DATE OF ISSUE. POSSIBLE UPDATES ARE AVAILABLE ON REQUEST