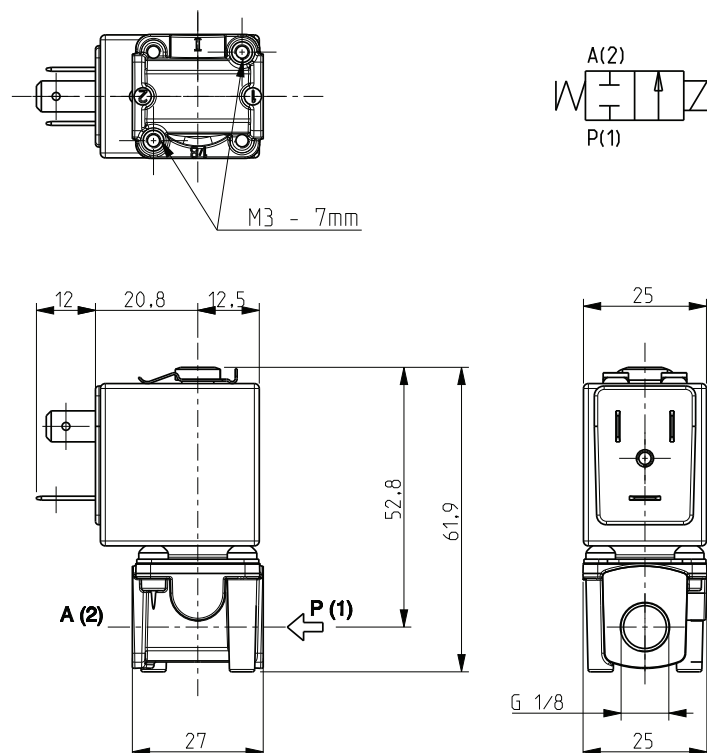


# ASCO™ SOLENOID VALVE

## 2/2 NORMALLY CLOSED – DIRECT ACTING - G 1/8

**SERIES**  
**L177-V07-V08**



### General Features

Direct acting solenoid valve.

Suitable to shut off liquid and gaseous fluids (verify the compatibility of fluid with materials in contact).

Technical Features	
Maximum allowable pressure (PS)	30bar
Opening time	from ~10ms to ~20ms.
Closing time	from ~10ms to ~20ms.
Fluid temperature	0°C +130°C
Max viscosity	5°E (~37 cStokes or mm²/s)

Materials in Contact with Fluid	
Body	Brass
Sealing	FPM
Internal components	Stainless steel
Seat	Brass
Core tube	Stainless steel
Shading coil	Copper

Coil		
Continuous duty	ED 100%	
Encapsulation material	PET (polyethylene terephthalate) fiberglass reinforced	
Insulation class	Z610A: F (155°C) Z614A: H (180°C) - UL	
Ambient temperature	Z610A: -10°C +60°C Z614A: -10°C +80°C	
Electric connections	DIN 46340 - 3 poles plug connectors	
Protection degree	IP 65 (EN 60529) with plug connectors	
Voltages	DC	12-24V (+10% -5%)
	AC	Z614A only: 24V/50Hz - 110V/50Hz (120V/60Hz) 230V/50Hz (+10% -15%) (Other voltages and frequencies on request)

Port size ISO 228	Orifice size (mm)	Differential pressure (bar)				Kv (m³/h)	Series and type		Power absorption			Sealings	Notes	Weight (kg)	
		Δp min	Δp max												
			Gases		Liquids										
			AC	DC	AC		DC	Valve	Coil	AC (VA)					DC (W)
G 1/8	3,2	0	-	5	-	5	0,25	L177V07	Z610A	-	-	6	FPM	-	0,170
			5	1	5	1		L177V08	Z614A	16	10			1 - 2	

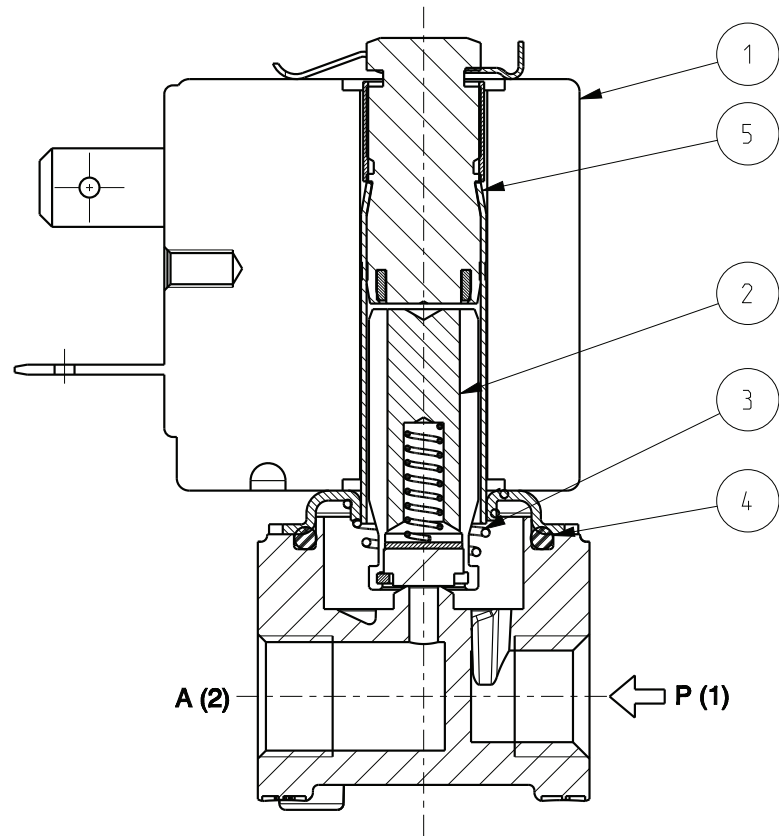
### Notes

- Sealings: FPM = Fluoro-carbon elastomer
- 1 - Suitable for operation with vacuum at port A (-1 bar relative pressure)
- 2 - Suitable for 2,6 bar back-pressure against the seal.

SERIES  
**L177-V07-V08**

**ASCO™ SOLENOID VALVE**  
2/2 NORMALLY CLOSED – DIRECT ACTING - G 1/8

Spare Parts



Kit description	Model	Kit P.N.	Consisting of:
Core kit	L177V07	G3014901	Core pos.2
	L177V08	G3010401	OR guide assembly pos.4
Core return spring kit	L177V07	G3003301	N.10 core return spring pos.3
	L177V08	G3010101	
Guide pipe assembly		G3151601	Guide pipe assembly pos.5 Coil clip
Coil		Z610A Z614A	Coil pos. 1

Installation

- Solenoid valve can be mounted in any position; vertical with coil upwards preferred.

THE VALIDITY OF REPORTED DATA IS REFERRED TO THE DATE OF ISSUE. POSSIBLE UPDATES ARE AVAILABLE ON REQUEST