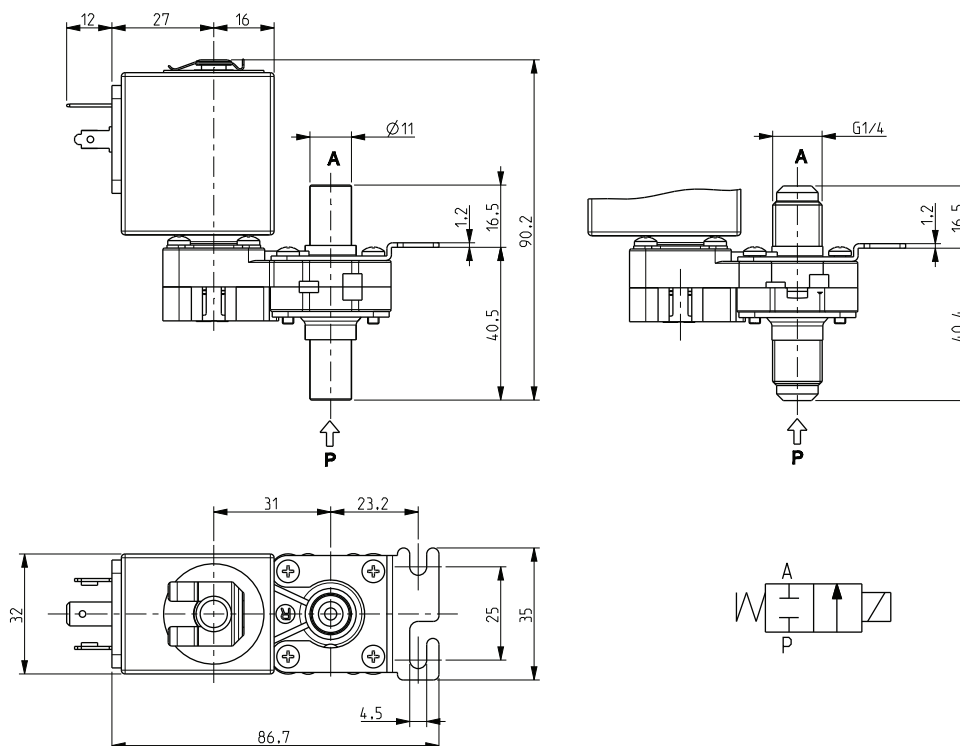


ASCO™ SOLENOID VALVE - DRY

2/2 NORMALLY CLOSED - DIRECT ACTING - TOTAL ISOLATION - G 1/4

SERIES

D144-D13



General Features

Direct acting, total isolation solenoid valve: the actuator is totally isolated from the medium so that the wetted parts are just the body and the lever-seal.

Possibility of disassembling for inspection.

Core duly coated by PTFE(polytetrafluoroethylene) based self lubricating material.

Suitable to shut off liquid and gaseous fluids (verify the compatibility of fluid with materials in contact).

| Technical Features | |
|---------------------------------|----------------------------|
| Maximum allowable pressure (PS) | 12 bar |
| Opening time | ~ 25ms |
| Closing time | ~ 25ms |
| Fluid temperature | -10°C +100°C |
| Max viscosity | 5°E (~37 cStokes or mm²/s) |

| Materials in Contact with Fluid | |
|---------------------------------|----------------------|
| Body | PEI (Polyetherimide) |
| Sealing | EPDM |

| Coil | |
|------------------------|--|
| Continuous Duty | ED 100% |
| Encapsulation material | PET (polyethylene terephthalate) fiberglass reinforced |
| Insulation class | F(140°C) |
| Ambient temperature | -10°C +60°C |
| Electric connections | DIN 46340 - 3 poles connector (DIN 43650) |
| Protection degree | IP 65 (EN 60529) with plug connector |
| Voltages | DC 12-24V (+10% -5%) |
| | AC 24V/50Hz - 110V/50Hz (120V/60Hz) - 230V/50Hz (+10% -15%) (Other voltages and frequencies on request) |

| Port size ISO 228 | Orifice size (mm) | Differential pressure (bar) | | | | | Kv (m³/h) | Series and type | | Power absorption | | | Sealings | Notes | Weight (kg) |
|----------------------|----------------------|-----------------------------|--------|----|---------|----|--------------|-----------------|-------|------------------|---------|--------|----------|-------|----------------|
| | | Δp min | Δp max | | | | | | | | | | | | |
| | | | Gases | | Liquids | | | | | | | | | | |
| | | | AC | DC | AC | DC | | Valve | Coil | Inrush | Holding | DC (W) | | | |
| G 1/4 | 5,5 | 0 | 4,5 | 1 | 4,5 | 1 | 0,55 | D144D13 | Z530A | 23 | 14 | 9 | EPDM | - | 0,255 |

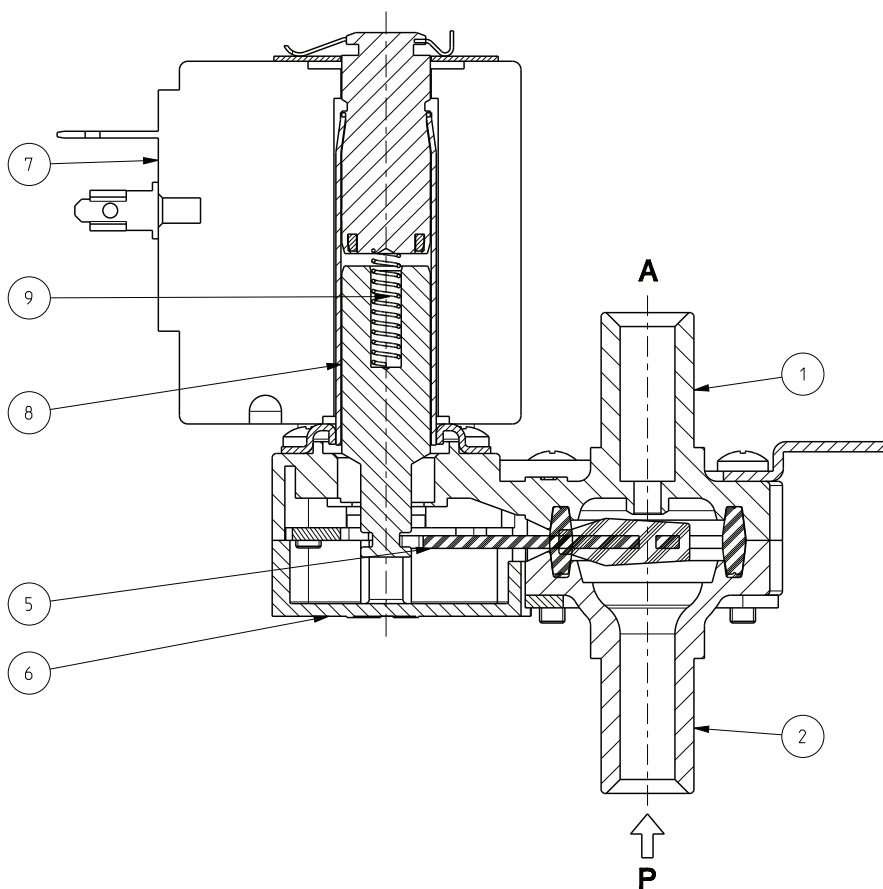
Notes

- Sealings : EPDM = Ethylene-propylene elastomer

SERIES
D144-D13

ASCO™ SOLENOID VALVE - DRY
2/2 NORMALLY CLOSED - DIRECT ACTING - TOTAL ISOLATION - G 1/4

Spare Parts



| Kit description | Kit P.N. | Consisting of: |
|-----------------|----------|--|
| Body kit | G2846802 | Upper body pos.1 Lower body pos.2 |
| Core kit | G2999201 | Core return spring pos.6 Core pos.7 |
| Lever seal | 2977703R | Lever seal pos.3 |
| Cover | 3119801R | Cover pos.4 |
| Coil | Z530A | Coil pos. 5 |

Installation

- In case of disassembling for usual maintenance, the fixing screws have to be tightened at 0,6 Nm max torque.
- Solenoid valve can be mounted in any position.
- Maximum driving torque of the pipe fittings for thread connections = 10Nm.

THE VALIDITY OF REPORTED DATA IS REFERRED TO THE DATE OF ISSUE. POSSIBLE UPDATES ARE AVAILABLE ON REQUEST