

>>> RKE Miniature General Purpose Relay

RKE Socket

>>> SKB -E

Presentation



10/12 AMPS 300 VOLTS



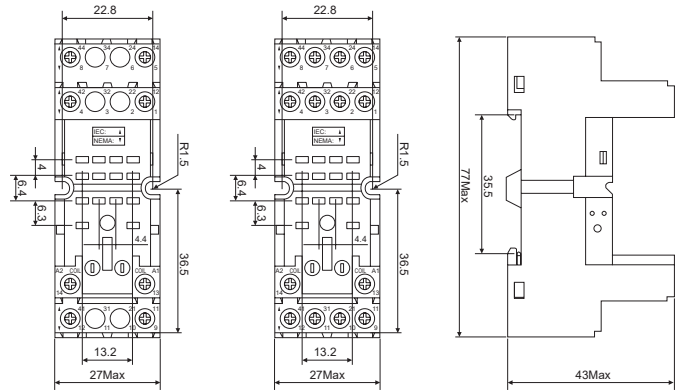
Characteristics

| Type | | | SKB08-E | SKB14-E |
|------------------------|--------------------------|-----|---------------|---------|
| Nominal load | Current | A | 12 | 10 |
| | Voltage | V | 300 | |
| Dielectric strength | Between coil and contact | V/S | 4000 | |
| | Between contacts | V/S | 2500 | |
| Max. tightening torque | Nm | | 1.0 | |
| Wire size | AWG/mm ² | | 20-14/0.5-2.5 | |
| Ambient temperature | °C | | -40~+85 | |
| Unit weight | g | | 50 | 56 |

Relay, accessories selection table

| Socket | Plastic clip | Metal clip | ID tag | Module | DIN rail |
|---------|--------------|------------|--------|--------|----------|
| SKB08-E | SK36F | SK36M | SK4P | AMD | PFP |
| SKB14-E | | | | | |

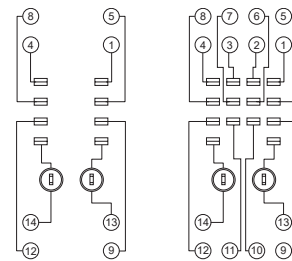
Dimensions (mm)



SKB08-E

SKB14-E

Connection Diagrams



SKB08-E

SKB14-E

>>> SKC -ST

Presentation



New

8/12 AMPS 300VOLTS



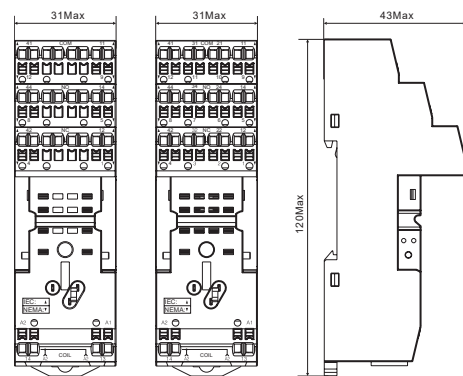
Characteristics

| Nominal load | Current | A | 2C 12A; 4C 8A | |
|---------------------|--------------------------|-----|---------------|--|
| Voltage | V | 300 | | |
| | Between coil and contact | V/S | 4000 | |
| Dielectric strength | Between contacts | V/S | 2500 | |
| | Max. tightening torque | Nm | - | |
| Wire size | AWG/mm ² | | 20-16/0.5-1.5 | |
| Ambient temperature | °C | | -40~+85 | |
| Unit weight | g | | 80 | |

Relay, accessories selection table

| Socket | Plastic clip | ID tag | Module | DIN rail | Bus Jumper |
|----------|--------------|--------|--------|----------|------------|
| SKC08-ST | SK36F | SR2P | AMD | DIN | ST01CC |
| SKC14-ST | | | | | |

Dimensions (mm)



SKC08-ST

SKC14-ST

Connection Diagrams

