

PCE

Connection
to the future



CEE wall and flanged sockets

CEE wall and flanged sockets

Wall sockets

Page

52



Flanged sockets straight

Page

64



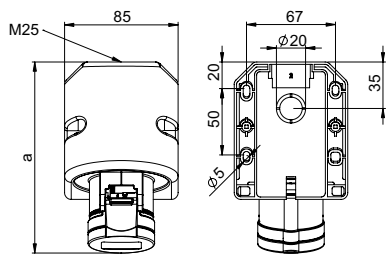
Flanged sockets sloping

Page

72



Wall sockets



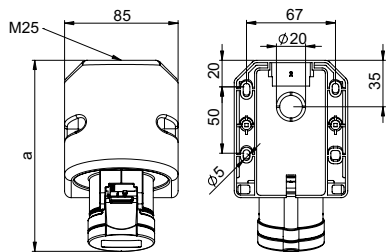
b=height
angle=15°

Wall socket

	16 Amp			32 Amp		
	3	4	5	3	4	5
Poles	3	4	5	3	4	5
a	142	145	144	155	155	157
b	98	98	104	107	107	113
M	25	25	25	25	25	25
Kind of connection:				Screw terminal		
Wire flexible [mm ²]	1-2,5			2,5-6		
solid [mm ²]	1-4			2,5-10		
Contact screws [Ncm]	100 Ncm			110 Ncm		
Weight [g]	227	239	258	275	293	330

- with screw terminals
- housing material: PA6
- contacts: brass
 - to order nickel-plated contacts please add a "v" e.g. 115-6v
- top and rear entry

IP44 splashproof



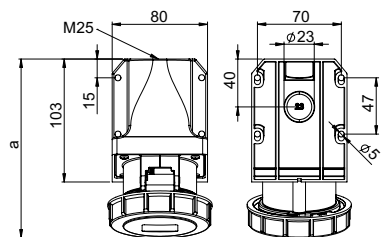
b=height
angle=15°

„Turbo Twist“ Wall socket

	16 Amp			32 Amp		
	3	4	5	3	4	5
Poles	3	4	5	3	4	5
a	142	145	144	155	155	157
b	98	98	104	107	107	113
M	25	25	25	25	25	25
Kind of connection:				Screwless terminal		
Wire flexible [mm ²]	1-2,5			2,5-6		
solid [mm ²]	1-4			2,5-10		
Weight [g]	231	242	266	272	293	332

- screwless connection technology
- housing material: PA6
- contacts: brass
 - to order nickel-plated contacts please add a "v" e.g. 115-6TTv
- top and rear entry

IP44 splashproof



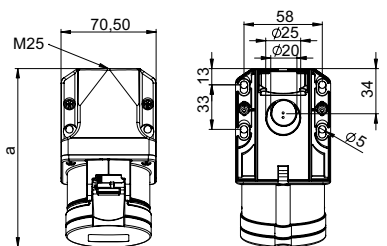
b=height
angle=15°

Wall socket

	16 Amp			32 Amp		
	3	4	5	3	4	5
Poles	3	4	5	3	4	5
a	146	148	148	161	161	163
b	96	99	102	108	108	112
M	25	25	25	25	25	25
Kind of connection:				Screw terminal		
Wire flexible [mm ²]	1-2,5			2,5-6		
solid [mm ²]	1-4			2,5-10		
Contact screws [Ncm]	100 Ncm			110 Ncm		
Weight [g]	225	243	268	295	311	347

- with screw terminals
- housing material: PA6
- contacts: brass
 - to order nickel-plated contacts please add a "v" e.g. 1152-6v
 - to order Turbo Twist design (screwless connection technology) please add a „TT“ e.g. 1152-6TT
- top and rear entry
- incl. blank cable gland

IP67 watertight



b=height
angle=15°

Wall socket

	16 Amp			32 Amp		
	3	4	5	3	4	5
Poles	3	4	5	3	4	5
a	132	133	133	145	145	145
b	95	97	100	104	104	106
M	25	25	25	25	25	25
Kind of connection:				Screw terminal		
Wire flexible [mm ²]	1-2,5			2,5-6		
solid [mm ²]	1-4			2,5-10		
Contact screws [Ncm]	100 Ncm			110 Ncm		
Weight [g]	203	213	232	250	266	308

- with screw terminals
- housing material: PA6
- contacts: brass
 - to order nickel-plated contacts please add a "v" e.g. 115-6kv
 - to order Turbo Twist design (screwless connection technology) please add a „TT“ e.g. 115-6kTT
- top and rear entry

IP44 splashproof

Amp.	Poles	pack. unit	110V~	230V~	400V~	500V~	>50-500V~	>50-500V~
			50/60Hz 4h	50/60Hz 3p=6h 4p+5p=9h	50/60Hz 3p=9h 4p+5p=6h	50/60Hz 7h	100-300Hz 10h	301-500Hz 2h
			Cat.No.	Cat.No.	Cat.No.	Cat.No.	Cat.No.	Cat.No.
16	3	10	113-4	113-6	113-9	113-7	113-10	113-2
16	4	10	114-4	114-9	114-6	114-7	114-10	114-2
16	5	10	115-4	115-9	115-6	115-7	115-10	115-2
32	3	10	123-4	123-6	123-9	123-7	123-10	123-2
32	4	10	124-4	124-9	124-6	124-7	124-10	124-2
32	5	10	125-4	125-9	125-6	125-7	125-10	125-2



113-6

16	3	10	113-4TT	113-6TT	113-9TT			
16	4	10	114-4TT	114-9TT	114-6TT			
16	5	10	115-4TT	115-9TT	115-6TT			
32	3	10	123-4TT	123-6TT	123-9TT			
32	4	10	124-4TT	124-9TT	124-6TT			
32	5	10	125-4TT	125-9TT	125-6TT			

TURBO
TWIST
click



113-6TT

16	3	5	1132-4	1132-6	1132-9	1132-7	1132-10	1132-2
16	4	5	1142-4	1142-9	1142-6	1142-7	1142-10	1142-2
16	5	5	1152-4	1152-9	1152-6	1152-7	1152-10	1152-2
32	3	5	1232-4	1232-6	1232-9	1232-7	1232-10	1232-2
32	4	5	1242-4	1242-9	1242-6	1242-7	1242-10	1242-2
32	5	5	1252-4	1252-9	1252-6	1252-7	1252-10	1252-2



1152-6

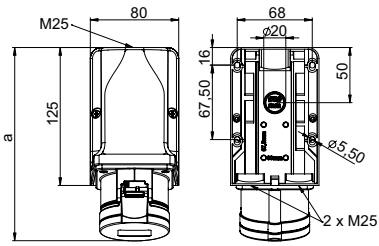
16	3	10	113-4k	113-6k	113-9k	113-7k	113-10k	113-2k
16	4	10	114-4k	114-9k	114-6k	114-7k	114-10k	114-2k
16	5	10	115-4k	115-9k	115-6k	115-7k	115-10k	115-2k
32	3	10	123-4k	123-6k	123-9k	123-7k	123-10k	123-2k
32	4	10	124-4k	124-9k	124-6k	124-7k	124-10k	124-2k
32	5	10	125-4k	125-9k	125-6k	125-7k	125-10k	125-2k



115-6k



Wall sockets



b=height
angle=15°

Wall socket

Poles	16 Amp			32 Amp		
	3	4	5	3	4	5
a	174	176	176	187	187	188
b	128	130	133	137	137	143
M	3x25	3x25	3x25	3x25	3x25	3x25
Kind of connection:	Screw terminal					
Wire flexible [mm ²]	1-2,5			2,5-6		
solid [mm ²]	1-4			2,5-10		
Contact screws [Ncm]	100 Ncm			110 Ncm		
Weight [g]	292	302	321	339	355	398

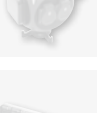
- with screw terminals
- for wiring through
- housing material: PA6
- contacts: brass
 - to order nickel-plated contacts please add a "v" e.g. 915-6v
 - to order Turbo Twist design (screwless connection technology) please add a „TT“ e.g. 915-6TT
- top, 2x bottom or rear entry

IP44 splashproof

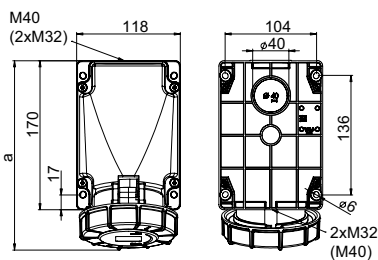
Amp.	Poles	pack. unit	110V~	230V~	400V~	500V~	>50- 500V~	>50- 500V~
			50/60Hz 4h	50/60Hz 3p=6h 4p+5p=9h	50/60Hz 3p=9h 4p+5p=6h	50/60Hz 7h	100-300Hz 10h	301-500Hz 2h
			Cat.No.	Cat.No.	Cat.No.	Cat.No.	Cat.No.	Cat.No.
16	3	5	913-4	913-6	913-9	913-7	913-10	913-2
16	4	5	914-4	914-9	914-6	914-7	914-10	914-2
16	5	5	915-4	915-9	915-6	915-7	915-10	915-2
32	3	5	923-4	923-6	923-9	923-7	923-10	923-2
32	4	5	924-4	924-9	924-6	924-7	924-10	924-2
32	5	5	925-4	925-9	925-6	925-7	925-10	925-2



913-6



Wall sockets



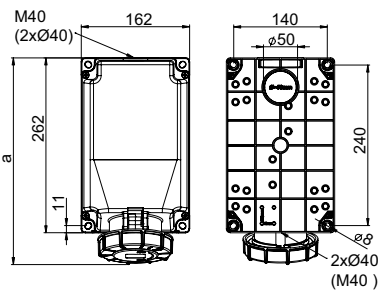
b=height
angle=15°

„Power Twist“ Wall socket

	63 Amp		
Poles	3	4	5
a	213	213	213
b	173	173	173
Kind of connection: Contact frame with screws			
Wire flexible [mm ²]	6-16		
solid [mm ²]	6-25		
Contact screws [Ncm]	200 Ncm		
Weight [g]	820	869	923

- contact frame with screws
- housing material: PC/ABS
- contacts: brass with lamellar contact CuBe
 - to order with pilot contact please add a „5“ e.g. 1335-6 (see page 9)
 - to order with pilot contact system (PCS) please add a „6“ e.g. 1336-6 (see page 10)
- top, bottom or rear entry
- housing can be rotated by 180°
- incl. blank cable gland
- cable-glands see accessories page 45

IP66/67 watertight
IP44 on request



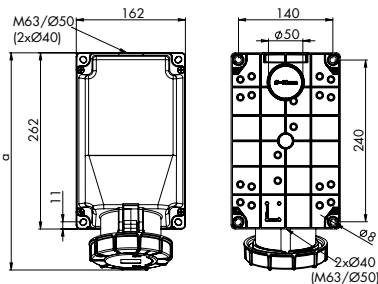
b=height
angle=15°

„Power Twist“ Wall socket

	63 Amp		
Poles	3	4	5
a	306	306	306
b	195	195	195
Kind of connection: Contact frame with screws			
Wire flexible [mm ²]	6-16		
solid [mm ²]	6-25		
Contact screws [Ncm]	200 Ncm		
Weight [g]	1360	1409	1463

- contact frame with screws
- housing material: PC/ABS
- contacts: brass with lamellar contact CuBe
 - to order with pilot contact please add a „5“ e.g. 13575-6 (see page 9)
 - to order with pilot contact system (PCS) please add a „6“ e.g. 13576-6 (see page 10)
- top, bottom or rear entry
- housing can be rotated by 180°
- incl. blank cable gland
- cable-glands see accessories page 45

IP66/67 watertight
IP44 on request



b=height
angle=15°

„Power Twist“ Wall socket

	125 Amp		
Poles	3	4	5
a	322	322	322
b	205	205	205
Kind of connection: Contact frame with screws			
Wire flexible [mm ²]	16-50		
solid [mm ²]	16-50		
Contact screws [Ncm]	450 Ncm		
Weight [g]	1745	1752	1852

- contact frame with screws
- housing material: PC/ABS
- contacts: brass with lamellar contact CuBe
 - to order with pilot contact please add a „5“ e.g. 1455-6 (see page 9)
 - to order with pilot contact system (PCS) please add a „6“ e.g. 1456-6 (see page 10)
- top, bottom or rear entry
- housing can be rotated by 180°
- incl. blank cable gland
- cable-glands see accessories page 45

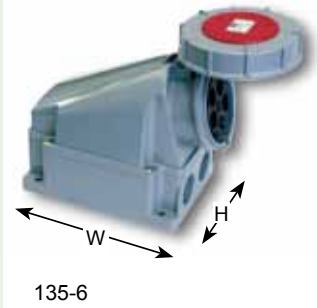
IP66/67 watertight



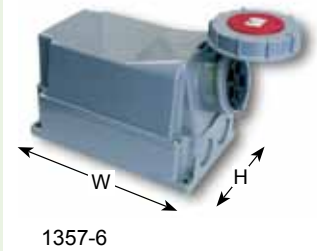
Advantages:

Housing can be rotated by 180° - the position of the cable entry can be chosen!

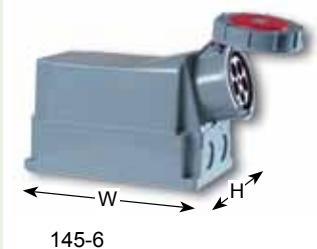
Amp.	Poles	pack. unit	110V~	230V~	400V~	500V~	>50-500V~	>50-500V~
			50/60Hz 4h	50/60Hz 3p=6h 4p+5p=9h	50/60Hz 3p=9h 4p+5p=6h	50/60Hz 7h	100-300Hz 10h	301-500Hz 2h
			Cat.No.	Cat.No.	Cat.No.	Cat.No.	Cat.No.	Cat.No.
Basic unit WxHxD = 170x118x172; 1xM40; 2xM32 see accessories page 44								
63	3	2	133-4	133-6	133-9	133-7	133-10	133-2
63	4	2	134-4	134-9	134-6	134-7	134-10	134-2
63	5	2	135-4	135-9	135-6	135-7	135-10	135-2



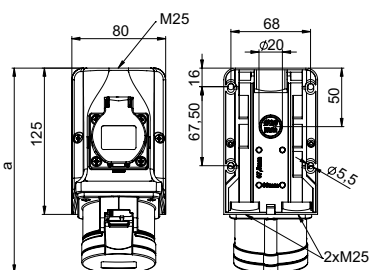
Basic unit WxHxD = 260x160x190; 1xM40; 2xØ40 see accessories page 44								
63	3	2	1337-4	1337-6	1337-9	1337-7	1337-10	1337-2
63	4	2	1347-4	1347-9	1347-6	1347-7	1347-10	1347-2
63	5	2	1357-4	1357-9	1357-6	1357-7	1357-10	1357-2



Basic unit WxHxD = 201x160x260; 1xØ50; 2xØ40 see accessories page 44								
125	3	1	143-4	143-6	143-9	143-7	143-10	143-2
Basic unit WxHxD = 201x160x260; 1xM63; 2xØ40 see accessories page 44								
125	4	1	144-4	144-9	144-6	144-7	144-10	144-2
125	5	1	145-4	145-9	145-6	145-7	145-10	145-2



Wall sockets - COMBO



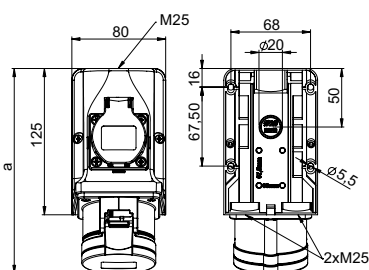
b=height
angle=15°

Wall socket - COMBO

	16 Amp			32 Amp		
	3	4	5	3	4	5
Poles	3	4	5	3	4	5
a	175	176	176	188	188	188
b	127	130	133	136	136	139
M	3x25	3x25	3x25	3x25	3x25	3x25
Kind of connection:	Screw terminal					
Wire flexible [mm ²]	1-2,5			2,5-6		
solid [mm ²]	1-4			2,5-10		
Contact screws CEE [Ncm]	100 Ncm			110 Ncm		
Screw terminals [Ncm]	120 Ncm					
Weight [g]	389	403	423	456	470	497

- with screw terminals
- wall socket with integrated socket (DIN 49440) national
- connecting terminals up to 10 mm²
- **ready wired**
- for Combo-wall socket 32A the socket (DIN 49440) is protected by fuse (10A slow)
- housing material: PA6
- contacts: brass
- to order nickel-plated contacts please add a "v" e.g. 9215-6v
- top, 2x bottom or rear entry

IP44 splashproof



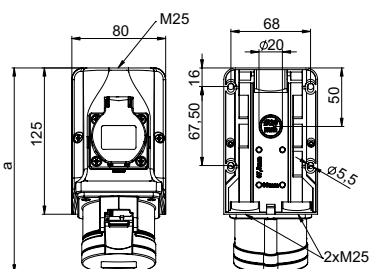
b=height
angle=15°

Wall socket - COMBO

	16 Amp			32 Amp		
	3	4	5	3	4	5
Poles	3	4	5	3	4	5
a	175	176	176	188	188	188
b	127	130	133	136	136	139
M	3x25	3x25	3x25	3x25	3x25	3x25
Kind of connection:	Screw terminal					
Wire flexible [mm ²]	1-2,5			2,5-6		
solid [mm ²]	1-4			2,5-10		
Contact screws CEE [Ncm]	100 Ncm			110 Ncm		
Screw terminals [Ncm]	120 Ncm					
Contact screws SSD [Ncm]	80 Ncm					
Weight [g]	354	368	388	411	425	452

- with screw terminals
- wall socket with integrated socket (DIN 49440) national
- connecting terminals up to 10 mm²
- **unwired**
- for Combo-wall socket 32A the socket (DIN 49440) is protected by fuse (10A slow)
- housing material: PA6
- contacts: brass
- to order nickel-plated contacts please add a "v" e.g. 9215-6vv
- top, 2x bottom or rear entry

IP44 splashproof



b=height
angle=15°

Wall socket - COMBO

	16 Amp			32 Amp		
	3	4	5	3	4	5
Poles	3	4	5	3	4	5
a	175	176	176	188	188	188
b	127	130	133	136	136	139
M	3x25	3x25	3x25	3x25	3x25	3x25
Kind of connection:	Screw terminal					
Wire flexible [mm ²]	1-2,5			2,5-6		
solid [mm ²]	1-4			2,5-10		
Contact screws CEE [Ncm]	100 Ncm			110 Ncm		
Screw terminals [Ncm]	120 Ncm					
Weight [g]	388	402	422	455	469	496

- with screw terminals
- wall socket with integrated socket (DIN 49440) Belgian/French standards
- connecting terminals up to 10 mm²
- **ready wired**
- for Combo-wall socket 32A the socket (DIN 49440) is protected by fuse (10A slow)
- housing material: PA6
- contacts: brass
- to order nickel-plated contacts please add a "v" e.g. 9215-6fv
- top, 2x bottom or rear entry

IP44 splashproof

230V~

50/60Hz
3p=6h
4p+5p=9h

400V~

50/60Hz
3p=9h
4p+5p=6h

Cat.No.

Cat.No.

Amp.	Poles	pack-unit
16	3	5
16	4	5
16	5	5
32	3	5
32	4	5
32	5	5

9213-6
9214-9

9214-6
9215-6

9223-6
9224-9

9224-6
9225-6



9215-6

16	3	5
16	4	5
16	5	5
32	3	5
32	4	5
32	5	5

9213-6w
9214-9w

9214-6w
9215-6w

9223-6w
9224-9w

9224-6w
9225-6w



9215-6w

16	3	5
16	4	5
16	5	5
32	3	5
32	4	5
32	5	5

9213-6f
9214-9f

9214-6f
9215-6f

9223-6f
9224-9f

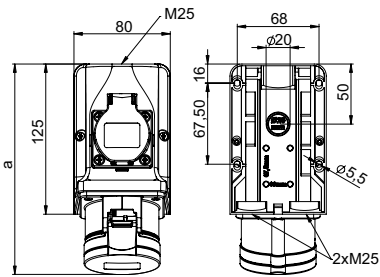
9224-6f
9225-6f



9215-6f



Wall sockets - COMBO

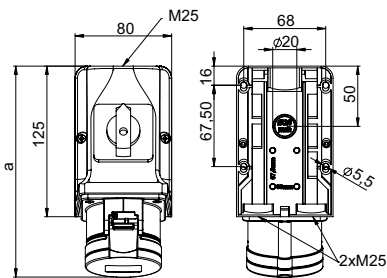


Wall socket - COMBO

	16 Amp			32 Amp		
	3	4	5	3	4	5
a	175	176	176	188	188	188
b	127	130	133	136	136	139
M	3x25	3x25	3x25	3x25	3x25	3x25
Kind of connection:	Screw terminal					
Wire flexible [mm ²]	1-2,5			2,5-6		
solid [mm ²]	1-4			2,5-10		
Contact screws CEE [Ncm]	100 Ncm			110 Ncm		
Screw terminals [Ncm]	120 Ncm					
Contact screws SSD [Ncm]	80 Ncm					
Weight [g]	353	367	387	410	424	451

- with screw terminals
- wall socket with integrated socket (DIN 49440) Belgian/French standards
- connecting terminals up to 10 mm²
- **unwired**
- for Combo-wall socket 32A the socket (DIN 49440) is protected by fuse (10A slow)
- housing material: PA6
- contacts: brass
 - to order nickel-plated contacts please add a "v" e.g. 9215-6fwv
- top, 2x bottom or rear entry

IP44 splashproof



Wall socket with switch

	16 Amp		32 Amp	
	5		5	
a	176		188	
b	133		139	
M	3x25		3x25	
Kind of connection:	Screw terminal			
Wire flexible [mm ²]	1-2,5		2,5-6	
solid [mm ²]	1-4		2,5-10	
Weight [g]	448		543	

- with screw terminals
- wall socket with integrated **ON/OFF switch AC22A**
- connecting terminals up to 10 mm²
- **prewired**
- housing material: PA6
- contacts: brass
 - to order nickel-plated contacts please add a "v" e.g. 75915-6v
- top, 2x bottom or rear entry

IP44 splashproof

230V~

50/60Hz
3p=6h
4p+5p=9h

400V~

50/60Hz
3p=9h
4p+5p=6h

Amp.	Poles	pack. unit
16	3	5
16	4	5
16	5	5
32	3	5
32	4	5
32	5	5

Cat.No.

Cat.No.

9213-6fw

9214-9fw

9214-6fw

9215-6fw

9223-6fw

9224-9fw

9224-6fw

9225-6fw



9215-6fw

16	5	5
32	5	5

75915-6

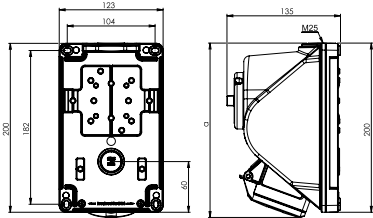
75925-6



75915-6



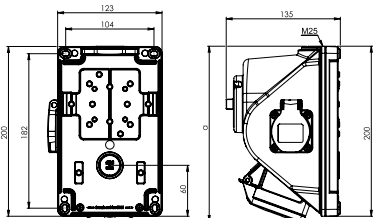
Wall sockets - COMBOPOL



Wall socket - COMBO-POL with flanged socket sloping

	16 Amp			32 Amp		
	3	4	5	3	4	5
Poles	3	4	5	3	4	5
a	208	209	207	211	211	212
Kind of connection:	Screw terminal					
Wire flexible [mm ²]	1-2,5			2,5-6		
solid [mm ²]	1-4			2,5-10		
Weight [g]	675	695	705	755	780	805

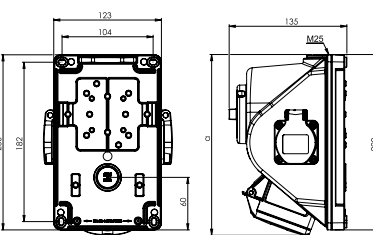
- CEE 16A 3p to 32A 5p
 - with screw terminals
 - housing material: PA6
 - contacts: nickel-plated contacts
- IP44** splashproof
IP67 on request



Wall socket - COMBO-POL with flanged socket sloping

	16 Amp			32 Amp		
	3	4	5	3	4	5
Poles	3	4	5	3	4	5
a	208	209	207	211	211	212
Kind of connection:	Screw terminal					
Wire flexible [mm ²]	1-2,5			2,5-6		
solid [mm ²]	1-4			2,5-10		
Weight [g]	675	695	705	755	780	805

- CEE 16A 3p to 32A 5p with 1 socket (DIN 49440) 16A 250V
 - with screw terminals
 - housing material: PA6
 - contacts: nickel-plated contacts
 - at 32A: socket (DIN 49440) protected with 10A fuse
 - available also with Belg./French, Danish, British and Swiss sockets
 - design with rotary lever on request
- IP44** splashproof



Wall socket - COMBO-POL with flanged socket sloping

	16 Amp			32 Amp		
	3	4	5	3	4	5
Poles	3	4	5	3	4	5
a	208	209	207	211	211	212
Kind of connection:	Screw terminal					
Wire flexible [mm ²]	1-2,5			2,5-6		
solid [mm ²]	1-4			2,5-10		
Weight [g]	675	695	705	755	780	805

- CEE 16A 3p to 32A 5p with 2 sockets (DIN 49440) 16A 250V
 - with screw terminals
 - housing material: PA6
 - contacts: nickel-plated contacts
 - at 32A: socket (DIN 49440) protected with 10A fuse
 - available also with Belg./French, Danish, British and Swiss sockets
 - design with rotary lever on request
- IP44** splashproof

Technical data:

- large connection area
- enclosure made of high impact resistance material
- ready wired for using
- cable entry M25 – top entry, Ø 25mm at the rear
- all external metal parts are made from stainless steel
- at switch-off position: lockable with padlock (40 mm)
- ON / OFF switch AC 22A, 10kA acc. to EN 60947-3
- switch all outlets

Amp.	Poles	pack. unit	Cat.No.	Switch	Socket outlet	Cat.No.	Switch	Socket outlet
16	3	1	96061350	0-1	0			
16	4	1	96061450	0-1	0			
16	5	1	96061550	0-1	0			
32	3	1	96062350	0-1	0			
32	4	1	96062450	0-1	0			
32	5	1	96062550	0-1	0			
with rotary lever								
16	4	1	960614501	L-0-R	0			
16	5	1	960615501	L-0-R	0			
32	4	1	960624501	L-0-R	0			
32	5	1	960625501	L-0-R	0			



96061550

16	3	1	96061351	0-1	1	national	96061341	0-1	1	belg./french.
16	4	1	96061451	0-1	1	national	96061441	0-1	1	belg./french.
16	5	1	96061551	0-1	1	national	96061541	0-1	1	belg./french.
32	3	1	96062351	0-1	1	national	96062341	0-1	1	belg./french.
32	4	1	96062451	0-1	1	national	96062441	0-1	1	belg./french.
32	5	1	96062551	0-1	1	national	96062541	0-1	1	belg./french.



96062551

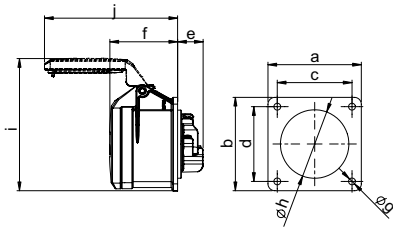
16	3	1	96061352	0-1	2	national	96061342	0-1	2	belg./french.
16	4	1	96061452	0-1	2	national	96061442	0-1	2	belg./french.
16	5	1	96061552	0-1	2	national	96061542	0-1	2	belg./french.
32	3	1	96062352	0-1	2	national	96062342	0-1	2	belg./french.
32	4	1	96062452	0-1	2	national	96062442	0-1	2	belg./french.
32	5	1	96062552	0-1	2	national	96062542	0-1	2	belg./french.



96061552

More cat.no. available on request!

Flanged sockets straight

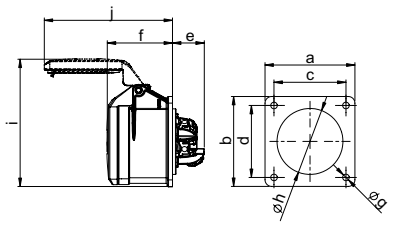


Flanged socket straight

	16 Amp			32 Amp		
	3	4	5	3	4	5
Poles	3	4	5	3	4	5
Flange a x b	75	75	75	75	75	75
Fixing center c x d	60	60	60	60	60	60
e	21	21	21	23	23	23
f	55	55	55	67	67	67
g	5,5	5,5	5,5	5,5	5,5	5,5
h	43	45	55	55	55	58
i	101	104	107	112	112	117
j	94	101	107	122	122	127
Kind of connection:	Screw terminal					
Wire flexible [mm ²]	1-2,5			2,5-6		
solid [mm ²]	1-4			2,5-10		
Contact screws [Ncm]	100 Ncm			110 Ncm		
Weight [g]	122	131	150	168	184	222

- with screw terminals
- housing material: PA6
- contacts: brass
 - to order nickel-plated contacts please add a "v" e.g. 315-6f7v

IP44 splashproof
IP44/54 16/3 and 32/3 are splash- and dustproof

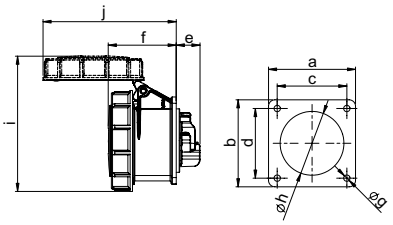


„Turbo Twist“ Flanged socket straight

	16 Amp			32 Amp		
	3	4	5	3	4	5
Poles	3	4	5	3	4	5
Flange a x b	75	75	75	75	75	75
Fixing center c x d	60	60	60	60	60	60
e	27	27	27	27	27	27
f	55	55	55	67	67	67
g	5,5	5,5	5,5	5,5	5,5	5,5
h	43	45	55	55	55	58
i	101	104	107	112	112	117
j	94	101	107	122	122	127
Kind of connection:	Screwless terminal					
Wire flexible [mm ²]	1-2,5			2,5-6		
solid [mm ²]	1-4			2,5-10		
Weight [g]	126	134	158	165	184	224

- screwless connection technology
- housing material: PA6
- contacts: brass
 - to order nickel-plated contacts please add a "v" e.g. 315-6TTF7v

IP44 splashproof
IP44/54 16/3; 16/5 and 32/5 are splash- and dustproof

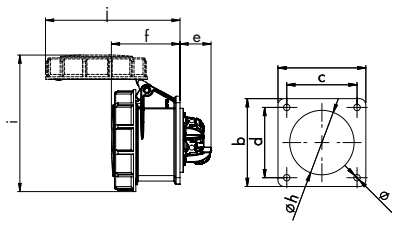


Flanged socket straight

	16 Amp			32 Amp		
	3	4	5	3	4	5
Poles	3	4	5	3	4	5
Flange a x b	75	75	75	75	75	75
Fixing center c x d	60	60	60	60	60	60
e	21	21	21	23	23	23
f	56	57	59	69	69	71
g	5,5	5,5	5,5	5,5	5,5	5,5
h	43	45	55	55	55	58
i	102	108	117	122	122	130
j	101	109	115	130	130	136
Kind of connection:	Screw terminal					
Wire flexible [mm ²]	1-2,5			2,5-6		
solid [mm ²]	1-4			2,5-10		
Contact screws [Ncm]	100 Ncm			110 Ncm		
Weight [g]	131	149	174	201	217	253

- with screw terminals
- housing material: PA6
- contacts: brass
 - to order nickel-plated contacts please add a "v" e.g. 3152-6v

IP67 watertight

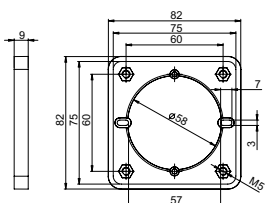


„Turbo Twist“ Flanged socket straight

	16 Amp			32 Amp		
	3	4	5	3	4	5
Poles	3	4	5	3	4	5
Flange a x b	75	75	75	75	75	75
Fixing center c x d	60	60	60	60	60	60
e	27	27	27	27	27	27
f	56	57	59	69	69	71
g	5,5	5,5	5,5	5,5	5,5	5,5
h	43	45	55	55	55	58
i	102	108	117	122	122	130
j	101	109	115	130	130	136
Kind of connection:	Screwless terminal					
Wire flexible [mm ²]	1-2,5			2,5-6		
solid [mm ²]	1-4			2,5-10		
Weight [g]	135	152	174	200	214	250

- screwless connection technology
- housing material: PA6
- contacts: brass
 - to order nickel-plated contacts please add a "v" e.g. 3152-6TTv

IP67 watertight



Cable conduit installation

	Intermediate flange for cable conduit installation
For CEE Flanged socket	
Flange	75x75 mm
Fixing center	60x60 mm
	Cat.No. 810-00

- suitable for CEE-flanged sockets with flange size 75x75 mm and fixing center 60x60 mm e.g. 315-6f7
- with intermediate flange, suitable for standard conduit mounting boxes

Amp.	Poles	pack. unit	110V~	230V~	400V~	500V~	>50-500V~	>50-500V~
			50/60Hz 4h	50/60Hz 3p=6h 4p+5p=9h	50/60Hz 3p=9h 4p+5p=6h	50/60Hz 7h	100-300Hz 10h	301-500Hz 2h
			Cat.No.	Cat.No.	Cat.No.	Cat.No.	Cat.No.	Cat.No.
with flange 75 x 75								
16	3	10	313-4f7	313-6f7	313-9f7	313-7f7	313-10f7	313-2f7
16	4	10	314-4f7	314-9f7	314-6f7	314-7f7	314-10f7	314-2f7
16	5	10	315-4f7	315-9f7	315-6f7	315-7f7	315-10f7	315-2f7
32	3	10	323-4f7	323-6f7	323-9f7	323-7f7	323-10f7	323-2f7
32	4	10	324-4f7	324-9f7	324-6f7	324-7f7	324-10f7	324-2f7
32	5	10	325-4f7	325-9f7	325-6f7	325-7f7	325-10f7	325-2f7



315-6f7

with flange 75 x 75								
16	3	10	313-4TTf7	313-6TTf7	313-9TTf7			
16	4	10	314-4TTf7	314-9TTf7	314-6TTf7			
16	5	10	315-4TTf7	315-9TTf7	315-6TTf7			
32	3	10	323-4TTf7	323-6TTf7	323-9TTf7			
32	4	10	324-4TTf7	324-9TTf7	324-6TTf7			
32	5	10	325-4TTf7	325-9TTf7	325-6TTf7			



313-6TTf7

with flange 75 x 75								
16	3	10	3132-4	3132-6	3132-9	3132-7	3132-10	3132-2
16	4	10	3142-4	3142-9	3142-6	3142-7	3142-10	3142-2
16	5	10	3152-4	3152-9	3152-6	3152-7	3152-10	3152-2
32	3	10	3232-4	3232-6	3232-9	3232-7	3232-10	3232-2
32	4	10	3242-4	3242-9	3242-6	3242-7	3242-10	3242-2
32	5	10	3252-4	3252-9	3252-6	3252-7	3252-10	3252-2



3152-6

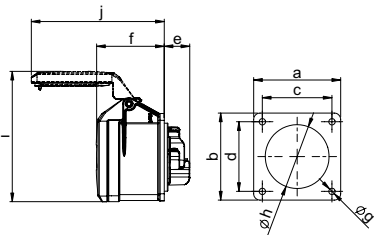
with flange 75 x 75								
16	3	10	3132-4TT	3132-6TT	3132-9TT			
16	4	10	3142-4TT	3142-9TT	3142-6TT			
16	5	10	3152-4TT	3152-9TT	3152-6TT			
32	3	10	3232-4TT	3232-6TT	3232-9TT			
32	4	10	3242-4TT	3242-9TT	3242-6TT			
32	5	10	3252-4TT	3252-9TT	3252-6TT			



3132-6TT



Flanged sockets straight

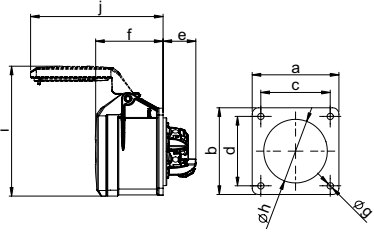


Flanged socket straight

	16 Amp			32 Amp		
	3	4	5	3	4	5
Poles	3	4	5	3	4	5
Flange a x b	70	70	70	70	70	70
Fixing center c x d	56	56	56	56	56	56
e	21	21	21	23	23	23
f	55	55	55	67	67	67
g	5,5	5,5	5,5	5,5	5,5	5,5
h	43	45	55	55	55	58
i	99	101	105	112	112	108
j	101	101	107	122	122	136
Kind of connection:	Screw terminal					
Wire flexible [mm ²]	1-2,5			2,5-6		
solid [mm ²]	1-4			2,5-10		
Contact screws [Ncm]	100 Ncm			110 Ncm		
Weight [g]	116	126	145	163	179	218

- with screw terminals
- housing material: PA6
- contacts: brass
- to order nickel-plated contacts please add a "v" e.g. 315-6v

IP44 splashproof
IP44/54 16/3; 16/5 and 32/5 are splash- and dustproof

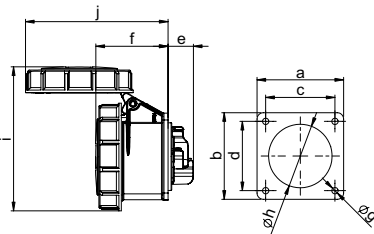


„Turbo Twist“ Flanged socket straight

	16 Amp			32 Amp		
	3	4	5	3	4	5
Poles	3	4	5	3	4	5
Flange a x b	70	70	70	70	70	70
Fixing center c x d	56	56	56	56	56	56
e	27	27	27	27	27	27
f	55	55	55	67	67	67
g	5,5	5,5	5,5	5,5	5,5	5,5
h	43	45	55	55	55	58
i	87	101	105	112	112	108
j	101	101	107	122	122	136
Kind of connection:	Screwless terminal					
Wire flexible [mm ²]	1-2,5			2,5-6		
solid [mm ²]	1-4			2,5-10		
Weight [g]	119	129	153	160	179	220

- screwless connection technology
- housing material: PA6
- contacts: brass
- to order nickel-plated contacts please add a "v" e.g. 315-6TTv

IP44 splashproof
IP44/54 16/3; 16/5 and 32/5 are splash- and dustproof



Flanged socket straight

	16 Amp		32 Amp
	3	5	5
Poles	3	5	5
Flange a x b	70	70	70
Fixing center c x d	56	56	56
e	21	21	23
f	56	59	71
g	5,5	5,5	5,5
h	43	55	58
i	100	117	130
j	101	115	136
Kind of connection:	Screw terminal		
Wire flexible [mm ²]	1-2,5		2,5-6
solid [mm ²]	1-4		2,5-10
Contact screws [Ncm]	100 Ncm		110 Ncm
Weight [g]	126	170	249

- with screw terminals
- housing material: PA6
- contacts: brass
- to order nickel-plated contacts please add a "v" e.g. 3152-6f70v

IP67 watertight

Amp.	Poles	pack. unit	110V~ 50/60Hz 4h	230V~ 50/60Hz 3p=6h 4p+5p=9h	400V~ 50/60Hz 3p=9h 4p+5p=6h	500V~ 50/60Hz 7h	>50- 500V~ 100-300Hz 10h	>50- 500V~ 301-500Hz 2h
			Cat.No.	Cat.No.	Cat.No.	Cat.No.	Cat.No.	Cat.No.

with flange 70 x 70								
16	3	10	313-4	313-6	313-9	313-7	313-10	313-2
16	4	10	314-4	314-9	314-6	314-7	314-10	314-2
16	5	10	315-4	315-9	315-6	315-7	315-10	315-2
32	3	10	323-4	323-6	323-9	323-7	323-10	323-2
32	4	10	324-4	324-9	324-6	324-7	324-10	324-2
32	5	10	325-4	325-9	325-6	325-7	325-10	325-2



315-6

with flange 70 x 70					
16	3	10	313-4TT	313-6TT	313-9TT
16	4	10	314-4TT	314-9TT	314-6TT
16	5	10	315-4TT	315-9TT	315-6TT
32	3	10	323-4TT	323-6TT	323-9TT
32	4	10	324-4TT	324-9TT	324-6TT
32	5	10	325-4TT	325-9TT	325-6TT

TURBO
TWIST
>click<



315-6TT

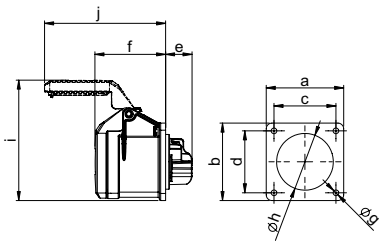
with flange 70 x 70								
16	3	10	3132-4f70	3132-6f70	3132-9f70	3132-7f70	3132-10f70	3132-2f70
16	5	10	3152-4f70	3152-9f70	3152-6f70	3152-7f70	3152-10f70	3152-2f70
32	5	10	3252-4f70	3252-9f70	3252-6f70	3252-7f70	3252-10f70	3252-2f70



3132-6f70



Flanged sockets straight

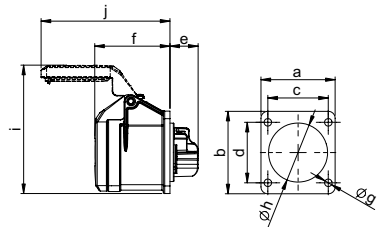


Flanged socket straight

	16 Amp		16 Amp	
	3	4	3	4
Poles	3	4	3	4
Flange a x b	65	65	60	60
Fixing center c x d	52	52	47	47
e	21	21	21	21
f	55	55	55	55
g	5,5	5,5	5,5	5,5
h	43	45	43	45
i	84	45	82	99
j	101	100	101	101
Kind of connection:	Screw terminal			
Wire flexible [mm ²]	1-2,5			
solid [mm ²]	1-4			
Contact screws [Ncm]	100 Ncm			
Weight [g]	114	124	108	120

- with screw terminals
- housing material: PA6
- contacts: brass
 - to order nickel-plated contacts please add a "v" e.g. 314-6f0v

IP44 splashproof
IP44/54 16/3 is splash- and dustproof

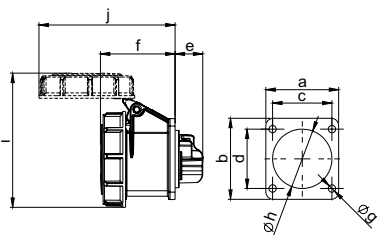


Flanged socket straight

	16 Amp	
	3	3
Poles	3	3
a	54	55
b	60	55
Fixing center c x d	44	44
e	21	21
f	55	55
g	5,5	5,5
h	43	43
i	82	80
j	101	101
Kind of connection:	Screw terminal	
Wire flexible [mm ²]	1-2,5	
solid [mm ²]	1-4	
Contact screws [Ncm]	100 Ncm	
Weight [g]	107	104

- with screw terminals
- housing material: PA6
- contacts: brass
 - to order nickel-plated contacts please add a "v" e.g. 313-6f5v

IP44/54 splashproof and dustproof



Flanged socket straight

	16 Amp			
	3	3	3	3
Poles	3	3	3	3
a	65	60	54	55
b	65	60	60	55
c	52	47	44	44
d	52	47	44	44
e	21	21	21	21
f	56	56	56	56
g	5,5	5,5	5,5	5,5
h	43	43	43	43
i	100	100	100	100
j	101	101	101	101
Kind of connection:	Screw terminal			
Wire flexible [mm ²]	1-2,5			
solid [mm ²]	1-4			
Contact screws [Ncm]	100 Ncm			
Weight [g]	123	119	120	117

- with screw terminals
- housing material: PA6
- contacts: brass
 - to order nickel-plated contacts please add a "v" e.g. 3132-6f0v

IP67 watertight

Amp.	Poles	pack. unit	110V~	230V~	400V~	500V~	>50-500V~	>50-500V~
			50/60Hz 4h	50/60Hz 3p=6h 4p+5p=9h	50/60Hz 3p=9h 4p+5p=6h	50/60Hz 7h	100-300Hz 10h	301-500Hz 2h
			Cat.No.	Cat.No.	Cat.No.	Cat.No.	Cat.No.	Cat.No.
with flange 65 x 65								
16	3	10	313-4f0	313-6f0	313-9f0	313-7f0	313-10f0	313-2f0
16	4	10	314-4f0	314-9f0	314-6f0	314-7f0	314-10f0	314-2f0
with flange 60 x 60								
16	3	10	313-4f6	313-6f6	313-9f6	313-7f6	313-10f6	313-2f6
16	4	10	314-4f6	314-9f6	314-6f6	314-7f6	314-10f6	314-2f6



313-6f0

with flange 54 x 60								
16	3	10	313-4f9	313-6f9	313-9f9	313-7f9	313-10f9	313-2f9
with flange 55 x 55								
16	3	10	313-4f5	313-6f5	313-9f5	313-7f5	313-10f5	313-2f5



313-6f9

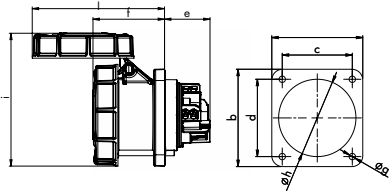
with flange 65 x 65								
16	3	10	3132-4f0	3132-6f0	3132-9f0	3132-7f0	3132-10f0	3132-2f0
with flange 60 x 60								
16	3	10	3132-4f6	3132-6f6	3132-9f6	3132-7f6	3132-10f6	3132-2f6
with flange 54 x 60								
16	3	10	3132-4f9	3132-6f9	3132-9f9	3132-7f9	3132-10f9	3132-2f9
with flange 55 x 55								
16	3	10	3132-4f5	3132-6f5	3132-9f5	3132-7f5	3132-10f5	3132-2f5



3132-6f9



Flanged sockets straight

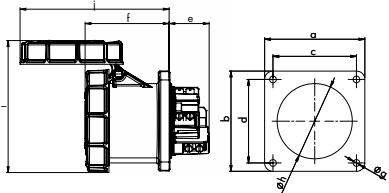


„Power Twist“ Flanged socket straight

	63 Amp			63 Amp		
	3	4	5	3	4	5
Poles	3	4	5	3	4	5
a	100	100	100	100	100	100
b	100	100	100	107	107	107
c	80	80	80	77	77	77
d	80	80	80	85	85	85
e	50	50	50	50	50	50
f	80	80	80	80	80	80
g	7	7	7	7	7	7
h	85	85	85	85	85	85
i	147	147	147	147	147	147
j	146	146	146	146	146	146
Kind of connection:	Contact frame with screws					
Wire flexible [mm ²]	6-16			6-25		
solid [mm ²]	6-25			200 Ncm		
Contact screws [Ncm]	200 Ncm					
Weight [g]	488	533	587	494	539	593

- contact frame with screws
- housing material: PA6
- contacts: brass with lamellar contact CuBe
- to order with pilot contact please add a „5“ e.g. 3335-6 (see page 9)
- to order with pilot contact system (PCS) please add a „6“ e.g. 3336-6 (see page 10)

IP66/67 wasserdicht
IP44 on request



„Power Twist“ Flanged socket straight

	125 Amp		
	3	4	5
Poles	3	4	5
Flange a x b	120	120	120
Fixing center c x d	100	100	100
e	48	48	48
f	101	101	101
g	8	8	8
h	90	90	90
i	159	159	159
j	179	179	179
Kind of connection:	Contact frame with screws		
Wire flexible [mm ²]	16-50		
solid [mm ²]	16-70		
Contact screws [Ncm]	450 Ncm		
Weight [g]	752	890	986

- contact frame with screws
- housing material: PA6
- contacts: brass with lamellar contact CuBe
- to order with pilot contact please add a „5“ e.g. 3455-6 (see page 9)
- to order with pilot contact system (PCS) please add a „6“ e.g. 3456-6 (see page 10)

IP66/67 wasserdicht

Amp.	Poles	pack. unit	110V~	230V~	400V~	500V~	>50-500V~	>50-500V~
			50/60Hz 4h	50/60Hz 3p=6h 4p+5p=9h	50/60Hz 3p=9h 4p+5p=6h	50/60Hz 7h	100-300Hz 10h	301-500Hz 2h
			Cat.No.	Cat.No.	Cat.No.	Cat.No.	Cat.No.	Cat.No.
with flange 100 x 100								
63	3	2	333-4	333-6	333-9	333-7	333-10	333-2
63	4	2	334-4	334-9	334-6	334-7	334-10	334-2
63	5	2	335-4	335-9	335-6	335-7	335-10	335-2
with flange 100 x 107								
63	3	2	333-4fc	333-6fc	333-9fc	333-7fc	333-10fc	333-2fc
63	4	2	334-4fc	334-9fc	334-6fc	334-7fc	334-10fc	334-2fc
63	5	2	335-4fc	335-9fc	335-6fc	335-7fc	335-10fc	335-2fc



335-6

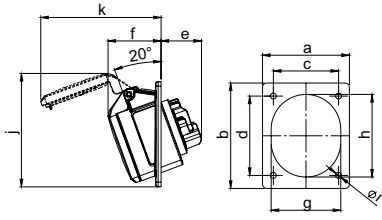
with flange 120 x 120								
125	3	2	343-4	343-6	343-9	343-7	343-10	343-2
125	4	2	344-4	344-9	344-6	344-7	344-10	344-2
125	5	2	345-4	345-9	345-6	345-7	345-10	345-2



345-6



Flanged sockets sloping

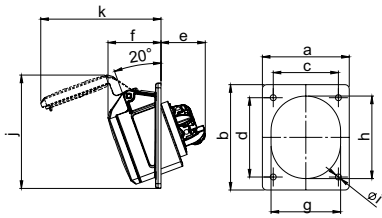


Flanged socket sloping

Poles	16 Amp			32 Amp		
	3	4	5	3	4	5
a	80	80	80	80	80	80
b	97	97	97	97	97	97
c	60	60	60	60	60	60
d	73	73	73	73	73	73
e	38	38	38	48	48	48
f	47	47	49	54	54	55
g	51	56	65	65	65	70
h	61	67	76	75	75	80
i	5,5	5,5	5,5	5,5	5,5	5,5
j	97	103	105	105	105	99
k	99	104	111	119	119	130
Kind of connection:	Screw terminal					
Wire flexible [mm ²]	1-2,5			2,5-6		
solid [mm ²]	1-4			2,5-10		
Contact screws [Ncm]	100 Ncm			110 Ncm		
Weight [g]	118	134	153	166	183	220

- with screw terminals
- housing material: PA6
- contacts: brass
 - to order nickel-plated contacts please add a "v" e.g. 415-6v

IP44 splashproof
IP44/54 16/3; 16/5 and 32/5 are splash- and dustproof

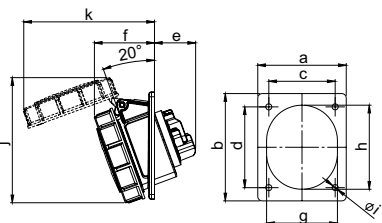


„Turbo Twist“ Flanged socket sloping

Poles	16 Amp			32 Amp		
	3	4	5	3	4	5
a	80	80	80	80	80	80
b	97	97	97	97	97	97
c	60	60	60	60	60	60
d	73	73	73	73	73	73
e	41	41	41	48	48	48
f	47	47	49	54	54	55
g	51	56	65	65	65	70
h	61	67	76	75	75	80
i	5,5	5,5	5,5	5,5	5,5	5,5
j	97	103	105	105	105	99
k	99	104	111	119	119	130
Kind of connection:	Screwless terminal					
Wire flexible [mm ²]	1-2,5			2,5-6		
solid [mm ²]	1-4			2,5-10		
Weight [g]	120	138	157	167	182	222

- screwless connection technology
- housing material: PA6
- contacts: brass
 - to order nickel-plated contacts please add a "v" e.g. 415-6TTv

IP44 splashproof
IP44/54 16/3; 16/5 and 32/5 are splash- and dustproof

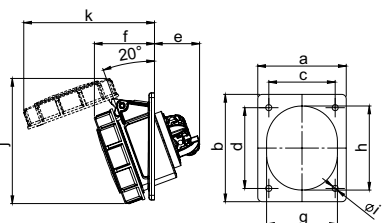


Flanged socket sloping

Poles	16 Amp			32 Amp		
	3	4	5	3	4	5
a	80	80	80	80	80	80
b	97	97	97	97	97	97
c	60	60	60	60	60	60
d	73	73	73	73	73	73
e	38	38	38	48	48	48
f	50	52	55	59	59	61
g	51	56	65	65	65	70
h	61	67	76	75	75	80
i	5,5	5,5	5,5	5,5	5,5	5,5
j	102	106	114	120	120	127
k	103	110	119	127	127	133
Kind of connection:	Screw terminal					
Wire flexible [mm ²]	1-2,5			2,5-6		
solid [mm ²]	1-4			2,5-10		
Contact screws [Ncm]	100 Ncm			110 Ncm		
Weight [g]	129	153	180	201	217	254

- with screw terminals
- housing material: PA6
- contacts: brass
 - to order nickel-plated contacts please add a "v" e.g. 4152-6f78v

IP67 watertight



„Turbo Twist“ Flanged socket sloping

Poles	16 Amp			32 Amp		
	3	4	5	3	4	5
a	80	80	80	80	80	80
b	97	97	97	97	97	97
c	60	60	60	60	60	60
d	73	73	73	73	73	73
e	41	41	41	48	48	48
f	50	52	55	59	59	61
g	51	56	65	65	65	70
h	61	67	76	75	75	80
i	5,5	5,5	5,5	5,5	5,5	5,5
j	102	106	114	120	120	127
k	103	110	119	127	127	133
Kind of connection:	Screwless terminal					
Wire flexible [mm ²]	1-2,5			2,5-6		
solid [mm ²]	1-4			2,5-10		
Weight [g]	131	158	188	201	217	256

- screwless connection technology
- housing material: PA6
- contacts: brass
 - to order nickel-plated contacts please add a "v" e.g. 4152-6TTf78v

IP67 watertight

Amp.	Poles	pack. unit	110V~	230V~	400V~	500V~	>50-500V~	>50-500V~
			Cat.No.	Cat.No.	Cat.No.	Cat.No.	Cat.No.	Cat.No.
			50/60Hz 4h	50/60Hz 3p=6h 4p+5p=9h	50/60Hz 3p=9h 4p+5p=6h	50/60Hz 7h	100-300Hz 10h	301-500Hz 2h
with flange 80 x 97								
16	3	10	413-4f8	413-6f8	413-9f8	413-7f8	413-10f8	413-2f8
16	4	10	414-4f8	414-9f8	414-6f8	414-7f8	414-10f8	414-2f8
16	5	10	415-4	415-9	415-6	415-7	415-10	415-2
32	3	10	423-4	423-6	423-9	423-7	423-10	423-2
32	4	10	424-4	424-9	424-6	424-7	424-10	424-2
32	5	10	425-4	425-9	425-6	425-7	425-10	425-2



415-6

with flange 80 x 97								
16	3	10	413-4TTf8	413-6TTf8	413-9TTf8			
16	4	10	414-4TTf8	414-9TTf8	414-6TTf8			
16	5	10	415-4TT	415-9TT	415-6TT			
32	3	10	423-4TT	423-6TT	423-9TT			
32	4	10	424-4TT	424-9TT	424-6TT			
32	5	10	425-4TT	425-9TT	425-6TT			

TURBO
TWIS*click*



415-6TT

with flange 80 x 97								
16	3	10	4132-4f8	4132-6f8	4132-9f8	4132-7f8	4132-10f8	4132-2f8
16	4	10	4142-4f8	4142-9f8	4142-6f8	4142-7f8	4142-10f8	4142-2f8
16	5	10	4152-4f78	4152-9f78	4152-6f78	4152-7f78	4152-10f78	4152-2f78
32	3	10	4232-4f78	4232-6f78	4232-9f78	4232-7f78	4232-10f78	4232-2f78
32	4	10	4242-4f78	4242-9f78	4242-6f78	4242-7f78	4242-10f78	4242-2f78
32	5	10	4252-4f78	4252-9f78	4252-6f78	4252-7f78	4252-10f78	4252-2f78



4152-6f78

with flange 80 x 97								
16	3	10	4132-4TTf8	4132-6TTf8	4132-9TTf8			
16	4	10	4142-4TTf8	4142-9TTf8	4142-6TTf8			
16	5	10	4152-4TTf78	4152-9TTf78	4152-6TTf78			
32	3	10	4232-4TTf78	4232-6TTf78	4232-9TTf78			
32	4	10	4242-4TTf78	4242-9TTf78	4242-6TTf78			
32	5	10	4252-4TTf78	4252-9TTf78	4252-6TTf78			

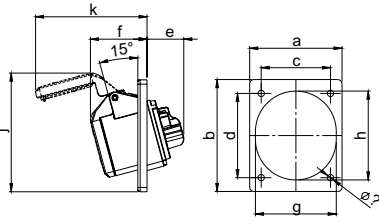
TURBO
TWIS*click*



4152-6TTf78



Flanged sockets sloping

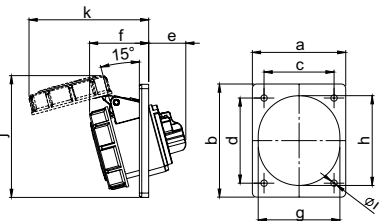


Flanged socket sloping

		16 Amp	
Poles	3	4	
a	70	70	
b	85	85	
c	50	50	
d	65	65	
e	38	38	
f	47	47	
g	51	56	
h	61	67	
i	5,5	5,5	
j	85	96	
k	99	104	
Kind of connection:	Screw terminal		
Wire flexible [mm ²]	1-2,5		
solid [mm ²]	1-4		
Contact screws [Ncm]	100 Ncm		
Weight [g]	113		128

- with screw terminals
- housing material: PA6
- contacts: brass
 - to order nickel-plated contacts please add a "v" e.g. 413-6v

IP44 splashproof
IP44/54 16/3; 16/5 and 32/5 are splash- and dustproof

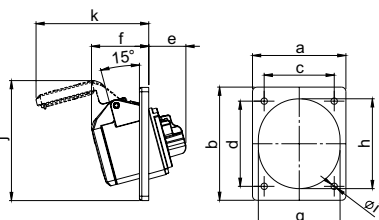


„Turbo Twist“ Flanged socket sloping

		16 Amp	
Poles	3	4	
a	70	70	
b	85	85	
c	50	50	
d	65	65	
e	41	41	
f	47	47	
g	51	56	
h	61	67	
i	5,5	5,5	
j	85	96	
k	99	104	
Kind of connection:	Screwless terminal		
Wire flexible [mm ²]	1-2,5		
solid [mm ²]	1-4		
Weight [g]	115		132

- screwless connection technology
- housing material: PA6
- contacts: brass
 - to order nickel-plated contacts please add a "v" e.g. 413-6TTv

IP44 splashproof
IP44/54 16/3; 16/5 and 32/5 are splash- and dustproof

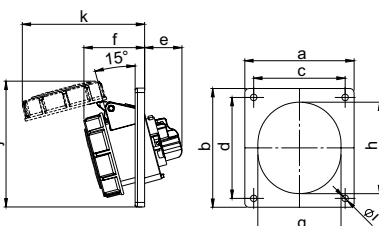


Flanged socket sloping

		16 Amp	
Poles	3	4	
a	70	70	
b	85	85	
c	50	50	
d	65	65	
e	38	38	
f	50	52	
g	51	56	
h	61	67	
i	5,5	5,5	
j	97	104	
k	102	111	
Kind of connection:	Screw terminal		
Wire flexible [mm ²]	1-2,5		
solid [mm ²]	1-4		
Contact screws [Ncm]	100 Ncm		
Weight [g]	126		145

- with screw terminals
- housing material: PA6
- contacts: brass
 - to order nickel-plated contacts please add a "v" e.g. 4132-6f78v

IP67 watertight



„Turbo Twist“ Flanged socket sloping

		16 Amp	
Pole	3	4	
a	70	70	
b	85	85	
c	50	50	
d	65	65	
e	41	41	
f	50	52	
g	51	56	
h	61	67	
i	5,5	5,5	
j	97	104	
k	102	111	
Kind of connection:	Screwless terminal		
Wire flexible [mm ²]	1-2,5		
solid [mm ²]	1-4		
Weight [g]	131		150

- with screw terminals
- three-piece version
- housing material: PA6
- contacts: brass
 - to order nickel-plated contacts please add a "v" e.g. 4132-6TTf78v

IP67 watertight

Amp.	Poles	pack. unit	110V~	230V~	400V~	500V~	>50-500V~	>50-500V~
			Cat.No.	Cat.No.	Cat.No.	Cat.No.	Cat.No.	Cat.No.
			50/60Hz 4h	50/60Hz 3p=6h 4p+5p=9h	50/60Hz 3p=9h 4p+5p=6h	50/60Hz 7h	100-300Hz 10h	301-500Hz 2h

with flange 70 x 85			110V~	230V~	400V~	500V~	>50-500V~	>50-500V~
16	3	10	413-4	413-6	413-9	413-7	413-10	413-2
16	4	10	414-4	414-9	414-6	414-7	414-10	414-2



413-6

with flange 70 x 85			110V~	230V~	400V~
16	3	10	413-4TT	413-6TT	413-9TT
16	4	10	414-4TT	414-9TT	414-6TT



413-6TT

with flange 70 x 85			110V~	230V~	400V~	500V~	>50-500V~	>50-500V~
16	3	10	4132-4f78	4132-6f78	4132-9f78	4132-7f78	4132-10f78	4132-2f78
16	4	10	4142-4f78	4142-9f78	4142-6f78	4142-7f78	4142-10f78	4142-2f78



4132-6f78

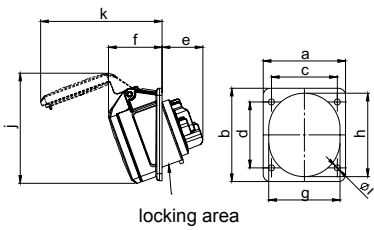
with flange 70 x 85			110V~	230V~	400V~
16	3	10	4132-4TTf78	4132-6TTf78	4132-9TTf78
16	4	10	4142-4TTf78	4142-9TTf78	4142-6TTf78



4132-6TTf78



Flanged sockets sloping

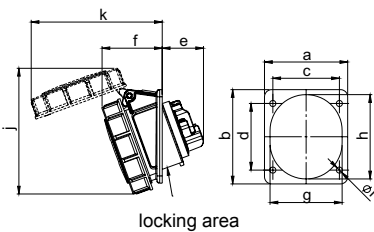


Flanged socket sloping

	16 Amp		
Poles	3	4	5
a	75	75	75
b	85	85	85
c	60	60	60
d	60	60	60
e	38	38	39
f	47	47	48
g	51	56	65
h	61	67	76
i	5,5	5,5	5,5
j	85	96	101
k	99	104	111
Kind of connection:	Screw terminal		
Wire flexible [mm ²]	1-2,5		
solid [mm ²]	1-4		
Contact screws [Ncm]	100 Ncm		
Weight [g]	112	127	148

- with screw terminals
- housing material: PA6
- contacts: brass
 - to order nickel-plated contacts please add a "v" e.g. 415-6f87v
- with locking area

IP44 splashproof
IP44/54 16/3 and 16/5 are splash- and dustproof

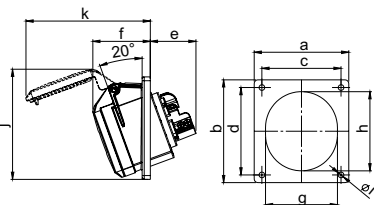


Flanged socket sloping

	16 Amp		
Poles	3	4	5
a	75	75	75
b	85	85	85
c	60	60	60
d	60	60	60
e	38	38	39
f	49	50	54
g	51	56	65
h	61	67	76
i	5,5	5,5	5,5
j	97	104	114
k	102	111	119
Kind of connection:	Screw terminal		
Wire flexible [mm ²]	1-2,5		
solid [mm ²]	1-4		
Contact screws [Ncm]	100 Ncm		
Weight [g]	125	146	173

- with screw terminals
- housing material: PA6
- contacts: brass
 - to order nickel-plated contacts please add a "v" e.g. 4152-6f87v
- with locking area

IP67 watertight

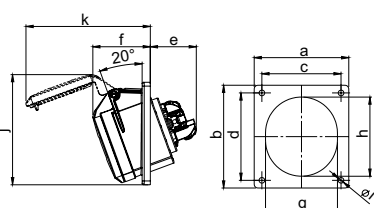


Flanged socket sloping

	16 Amp		32 Amp	
Poles	5	3	4	5
a	92	92	92	92
b	100	100	100	100
c	77	77	77	77
d	85	85	85	85
e	41	45	45	45
f	50	56	56	59
g	70	77	77	77
h	77	88	88	88
i	5,5	5,5	5,5	5,5
j	107	108	108	101
k	111	121	121	132
Kind of connection:	Screw terminal			
Wire flexible [mm ²]	1-2,5		2,5-6	
solid [mm ²]	1-4		2,5-10	
Contact screws [Ncm]	100 Ncm		110 Ncm	
Weight [g]	165	182	198	234

- with screw terminals
- housing material: PA6
- contacts: brass
 - to order nickel-plated contacts please add a "v" e.g. 4152-6f9v

IP44 splashproof
IP44/54 16/5 and 32/5 are splash- and dustproof



„Turbo Twist“ Flanged socket sloping

	16 Amp		32 Amp	
Poles	5	3	4	5
a	92	92	92	92
b	100	100	100	100
c	77	77	77	77
d	85	85	85	85
e	44	45	45	45
f	50	56	56	59
g	70	77	77	77
h	77	88	88	88
i	5,5	5,5	5,5	5,5
j	107	108	108	101
k	111	121	121	132
Kind of connection:	Screwless terminal			
Wire flexible [mm ²]	1-2,5		2,5-6	
solid [mm ²]	1-4		2,5-10	
Weight [g]	169	183	198	236

- screwless connection technology
- housing material: PA6
- contacts: brass
 - to order nickel-plated contacts please add a "v" e.g. 4152-6TTf9v

IP44 splashproof
IP44/54 16/5 and 32/5 are splash- and dustproof

Amp.	Poles	pack. unit	110V~ 50/60Hz 4h	230V~ 50/60Hz 3p=6h 4p+5p=9h	400V~ 50/60Hz 3p=9h 4p+5p=6h	500V~ 50/60Hz 7h	>50- 500V~ 100-300Hz 10h	>50- 500V~ 301-500Hz 2h
			Cat.No.	Cat.No.	Cat.No.	Cat.No.	Cat.No.	Cat.No.

with flange 75 x 80								
16	3	10	413-4f87	413-6f87	413-9f87	413-7f87	413-10f87	413-2f87
16	4	10	414-4f87	414-9f87	414-6f87	414-7f87	414-10f87	414-2f87
16	5	10	415-4f87	415-9f87	415-6f87	415-7f87	415-10f87	415-2f87



415-6f87

with flange 75 x 80								
16	3	10	4132-4f87	4132-6f87	4132-9f87	4132-7f87	4132-10f87	4132-2f87
16	4	10	4142-4f87	4142-9f87	4142-6f87	4142-7f87	4142-10f87	4142-2f87
16	5	10	4152-4f87	4152-9f87	4152-6f87	4152-7f87	4152-10f87	4152-2f87



4152-6f87

with flange 92 x 100								
16	5	10	4152-4f9	4152-9f9	4152-6f9	4152-7f9	4152-10f9	4152-2f9
32	3	10	4232-4f9	4232-6f9	4232-9f9	4232-7f9	4232-10f9	4232-2f9
32	4	10	4242-4f9	4242-9f9	4242-6f9	4242-7f9	4242-10f9	4242-2f9
32	5	10	4252-4f9	4252-9f9	4252-6f9	4252-7f9	4252-10f9	4252-2f9



4152-6f9

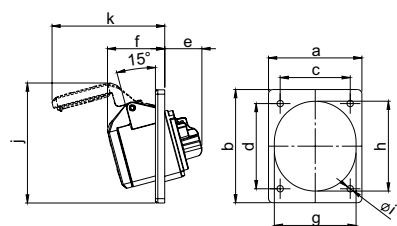
with flange 92 x 100					
16	5	10	4152-4TTf9	4152-9TTf9	4152-6TTf9
32	3	10	4232-4TTf9	4232-6TTf9	4232-9TTf9
32	4	10	4242-4TTf9	4242-9TTf9	4242-6TTf9
32	5	10	4252-4TTf9	4252-9TTf9	4252-6TTf9



4152-6TTf9



Flanged sockets sloping

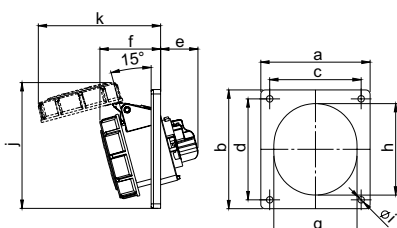


„Twist“ Flanged socket sloping

	16 Amp	
Poles	3	4
a	92	92
b	100	100
c	77	77
d	85	85
e	32	33
f	50	50
g	70	70
h	77	77
i	5,5	5,5
j	105	108
k	97	104
Kind of connection:	Screw terminal	
Wire flexible [mm ²]	1-2,5	
solid [mm ²]	1-4	
Contact screws [Ncm]	100 Ncm	
Weight [g]	121	141

- with screw terminals
- three-piece version
- housing material: PA6
- contacts: brass
 - to order nickel-plated contacts please add a "v" e.g. 414-6f9v

IP44 splashproof



„Twist“ Flanged socket sloping

	16 Amp			32 Amp		
Poles	3	4	5	3	4	5
a	92	92	92	92	92	92
b	100	100	100	100	100	100
c	77	77	77	77	77	77
d	85	85	85	85	85	85
e	32	33	35	40	40	40
f	52	53	54	64	64	65
g	70	70	70	77	77	77
h	77	77	77	88	88	88
i	5,5	5,5	5,5	5,5	5,5	5,5
j	106	109	115	121	121	128
k	103	111	117	132	132	136
Kind of connection:	Screw terminal					
Wire flexible [mm ²]	1-2,5			2,5-6		
solid [mm ²]	1-4			2,5-10		
Contact screws [Ncm]	100 Ncm			110 Ncm		
Weight [g]	152	172	206	226	250	278

- with screw terminals
- three-piece version
- housing material: PA6
- contacts: brass
 - to order nickel-plated contacts please add a "v" e.g. 4152-6v

IP67 watertight

Amp.	Poles	pack. unit	110V~	230V~	400V~	500V~	>50- 500V~	>50- 500V~
			50/60Hz 4h	50/60Hz 3p=6h 4p+5p=9h	50/60Hz 3p=9h 4p+5p=6h	50/60Hz 7h	100-300Hz 10h	301-500Hz 2h
			Cat.No.	Cat.No.	Cat.No.	Cat.No.	Cat.No.	Cat.No.
with flange 92 x 100								
16	3	10	413-4f9	413-6f9	413-9f9	413-7f9	413-10f9	413-2f9
16	4	10	414-4f9	414-9f9	414-6f9	414-7f9	414-10f9	414-2f9



413-6f9

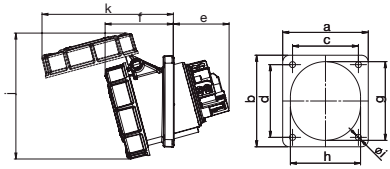
with flange 92 x 100								
16	3	10	4132-4	4132-6	4132-9	4132-7	4132-10	4132-2
16	4	10	4142-4	4142-9	4142-6	4142-7	4142-10	4142-2
16	5	10	4152-4	4152-9	4152-6	4152-7	4152-10	4152-2
32	3	10	4232-4	4232-6	4232-9	4232-7	4232-10	4232-2
32	4	10	4242-4	4242-9	4242-6	4242-7	4242-10	4242-2
32	5	10	4252-4	4252-9	4252-6	4252-7	4252-10	4252-2



4132-6



Flanged sockets sloping, surface outlet

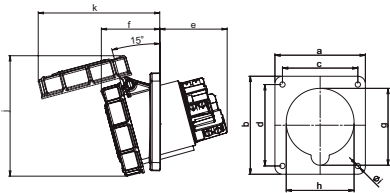


„Power Twist“ Flanged socket sloping

Poles	63 Amp			63 Amp			63 Amp		
	3	4	5	3	4	5	3	4	5
a	100	100	100	100	100	100	106	106	106
b	112	112	112	107	107	107	110	110	110
c	80	80	80	77	77	77	90	90	90
d	88	88	88	85	85	85	90	90	90
e	64	64	64	64	64	64	64	64	64
f	80	80	80	80	80	80	80	80	80
g	92	92	92	92	92	92	92	92	92
h	82	82	82	82	82	82	82	82	82
i	7	7	7	7	7	7	7	7	7
j	148	148	148	148	148	148	148	148	148
k	154	154	154	154	154	154	154	154	154
Kind of connection:	Contact frame with screws								
Wire flexible [mm ²]	6-16								
solid [mm ²]	6-25								
Contact screws [Ncm]	200 Ncm								
Weight [g]	495	540	595	491	536	591	498	443	598

- contact frame with screws
- housing material: PA6
- contacts: brass with lamellar contact CuBe
- to order with pilot contact please add a „5“ e.g. 4355-6 (see page 9)
- to order with pilot contact system (PCS) please add a „6“ e.g. 4356-6 (see page 10)

IP66/67 watertight
IP44 on request

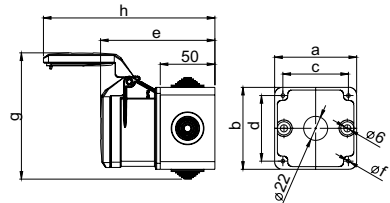


„Power Twist“ Flanged socket sloping

Poles	125 Amp			125 Amp		
	3	4	5	3	4	5
a	120	120	120	114	114	114
b	130	130	130	114	114	114
c	100	100	100	90	90	90
d	108	108	108	90	90	90
e	92	92	92	92	92	92
f	77	77	77	77	77	77
g	102	102	102	102	102	102
h	90	90	90	90	90	90
i	7	7	7	7	7	7
j	160	160	160	160	160	160
k	162	162	162	162	162	162
Kind of connection:	Contact frame with screws					
Wire flexible [mm ²]	16-50					
solid [mm ²]	16-70					
Contact screws [Ncm]	450 Ncm					
Weight [g]	804	896	995	792	880	987

- contact frame with screws
- housing material: PA6
- contacts: brass with lamellar contact CuBe
- to order with pilot contact please add a „5“ e.g. 4455-6 (see page 9)
- to order with pilot contact system (PCS) please add a „6“ e.g. 4456-6 (see page 10)

IP66/67 watertight



Surface outlet

Poles	16 Amp			32 Amp		
	3	4	5	3	4	5
Flange						
a x b	75	75	75	75	75	75
Fixing center						
c x d	60	60	60	60	60	60
e	105	105	105	115	115	115
f	3,3	3,3	3,3	3,3	3,3	3,3
g	110	113	116	118	118	122
h	144	152	157	172	172	77
Kind of connection:	Screw terminal					
Wire flexible [mm ²]	1-2,5			2,5-6		
solid [mm ²]	1-4			2,5-10		
Contact screws [Ncm]	100 Ncm			110 Ncm		
Weight [g]	190	205	220	260	270	295

- with screw terminals
- housing material: PA6
- contacts: brass
- to order nickel-plated contacts please add a "v" e.g. 80015-6v
- suitable for flanged sockets 16A, 32A
- available with 2, 4 or without lead-through nipple

IP44 splashproof

Amp.	Poles	pack. unit	110V~	230V~	400V~	500V~	>50-500V~	>50-500V~
			50/60Hz 4h	50/60Hz 3p=6h 4p+5p=9h	50/60Hz 3p=9h 4p+5p=6h	50/60Hz 7h	100-300Hz 10h	301-500Hz 2h
			Cat.No.	Cat.No.	Cat.No.	Cat.No.	Cat.No.	Cat.No.
with flange 100 x 112								
63	3	2	433-4	433-6	433-9	433-7	433-10	433-2
63	4	2	434-4	434-9	434-6	434-7	434-10	434-2
63	5	2	435-4	435-9	435-6	435-7	435-10	435-2
with flange 100 x 107								
63	3	2	433-4fc	433-6fc	433-9fc	433-7fc	433-10fc	433-2fc
63	4	2	434-4fc	434-9fc	434-6fc	434-7fc	434-10fc	434-2fc
63	5	2	435-4fc	435-9fc	435-6fc	435-7fc	435-10fc	435-2fc
with flange 106 x 110								
63	3	2	433-4fd	433-6fd	433-9fd	433-7fd	433-10fd	433-2fd
63	4	2	434-4fd	434-9fd	434-6fd	434-7fd	434-10fd	434-2fd
63	5	2	435-4fd	435-9fd	435-6fd	435-7fd	435-10fd	435-2fd



435-6

with flange 120 x 130								
125	3	2	443-4	443-6	443-9	443-7	443-10	443-2
125	4	2	444-4	444-9	444-6	444-7	444-10	444-2
125	5	2	445-4	445-9	445-6	445-7	445-10	445-2
with flange 114 x 114								
125	3	2	443-4fe	443-6fe	443-9fe	443-7fe	443-10fe	443-2fe
125	4	2	444-4fe	444-9fe	444-6fe	444-7fe	444-10fe	444-2fe
125	5	2	445-4fe	445-9fe	445-6fe	445-7fe	445-10fe	445-2fe



445-6

			complete surface outlet	surface outlet empty	
with flange 75 x 75					
16	3	10	80013-6	80014-6 80015-6	80000 without lead-through nipple
16	4	10			
16	5	10			
16	3	10	80213-6	80214-6 80215-6	80200 2 lead-through nipples
16	4	10			
16	5	10			
16	3	10	80413-6	80414-6 80415-6	80400 4 lead-through nipples
16	4	10			
16	5	10			



80415-6

32A and special clock positions - available on request!



Design-Sockets

Flanged socket

Page **84**



Surface outlet

Page **84**



Flush outlet

Page **84**



Accessories

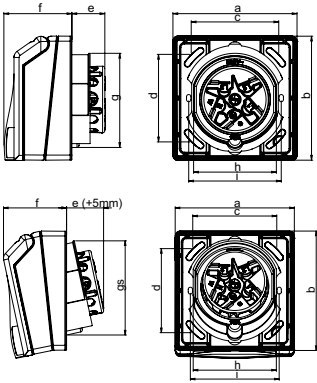
Page **86**

Advantages

Page **88**



Design Socket

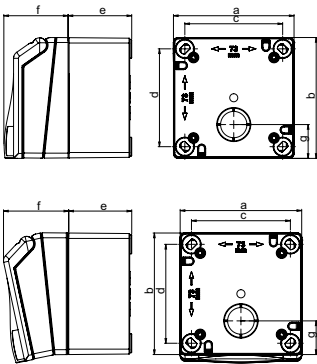


Flanged socket

	16 Amp		32 Amp		SSD
Poles	3	4	5	5	3
Flange					
a x b	90	90	90	90	90
Fixing center					
c x d	60	60	60	60	60
e	23	24	24	36	14
f	49	49	49	49	49
g	66	66	69	78	66
h	63	63	63	74	63
i	67	67	67	-	67
Kind of connection:	Screw terminal				
Wire flexible [mm ²]	1-2,5		2,5-6		
solid [mm ²]	1-4		2,5-10		
Contact screws [Ncm]	100 Ncm		110 Ncm		80 Ncm
Weight [g]	196	215	231	290	159

- with screw terminals
- housing material: PC/ABS
- contacts: nickel-plated contacts
- Flange can be rotated by 180° - straight and sloping design all in one!
- suitable for installation of cable conduits
- 16A sockets: installation also possible in customary cavity wall and concrete sockets with fixing center 67mm
- with inscription field

IP44 splashproof

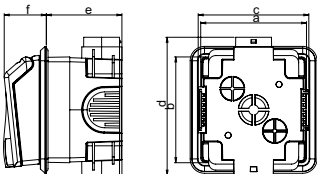


Surface outlet

	16 Amp		32 Amp		SSD
Poles	3	4	5	5	3
Flange					
a x b	90	90	90	90	90
Fixing center					
c x d	73	73	73	73	73
e	47	47	47	47	47
f	49	49	49	49	49
g	25	25	25	25	25
Kind of connection:	Screw terminal				
Wire flexible [mm ²]	1-2,5		2,5-6		
solid [mm ²]	1-4		2,5-10		
Contact screws [Ncm]	100 Ncm		110 Ncm		80 Ncm
Weight [g]	282	302	318	376	245

- with screw terminals
- housing material: PC/ABS
- contacts: nickel-plated contacts
- one side entry with offset nipple, possible entry on the other with cutout
- with inscription field

IP44 splashproof



Flush outlet

	16 Amp		32 Amp		SSD
Poles	3	4	5	5	3
Flange					
a x b	90	90	90	90	90
Fixing center					
c	92	92	92	92	92
d	115	115	115	115	115
e	35	35	35	35	35
f	49	49	49	49	49
Kind of connection:	Screw terminal				
Wire flexible [mm ²]	1-2,5		2,5-6		
solid [mm ²]	1-4		2,5-10		
Contact screws [Ncm]	100 Ncm		110 Ncm		80 Ncm
Weight [g]	278	298	313	373	240

- with screw terminals
- housing material: PC/ABS
- contacts: nickel-plated contacts
- entry from top, bottom, side or rear by cutout
- in rows with both horizontal and vertical insertion
- with inscription field
- with integrated cover frame and a fix inclination of 6° - small projection (35mm)

IP44 splashproof



Safe against ball throwing

All Design Sockets are safe against ball throwing according to DIN 18032 for the special application in sports halls.

All Design Sockets are available in the following colours: white (standard), pearl white und light grey:

To order white, just choose the above mentioned numbers	e.g.	845-6v	RAL 9016
To order pearl white add „w“	e.g.	845-6wv	RAL 1013
To order light grey add „g“	e.g.	845-6gv	RAL 7035

110V~

50/60Hz
4h

230V~

50/60Hz
3p=6h
4p+5p=9h

400V~

50/60Hz
3p=9h
4p+5p=6h

250V~

50/60Hz
Flange
50x50

Amp.
Poles
pack unit

Cat.No.

Cat.No.

Cat.No.

Cat.No.

(CEE-socket)

(CEE-socket)

(CEE-socket)

(with socket (DIN 49940))

16	3	6
16	4	6
16	5	6
32	5	6
16	2+PE	6

843-4v	843-6v	843-9v
844-4v	844-9v	844-6v
845-4v	845-9v	845-6v
855-4v	855-9v	855-6v

8430v



16	3	6
16	4	6
16	5	6
32	5	6
16	2+PE	6

863-4v	863-6v	863-9v
864-4v	864-9v	864-6v
865-4v	865-9v	865-6v
875-4v	875-9v	875-6v

8630v



16	3	6
16	4	6
16	5	6
32	5	6
16	2+PE	6

883-4v	883-6v	883-9v
884-4v	884-9v	884-6v
885-4v	885-9v	885-6v
895-4v	895-9v	895-6v

8830v



new!

Flush socket outlet projection



Design Socket Accessories

Cover frame 1-way with gasket

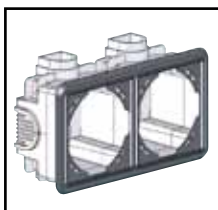
- Dimensions: 105 x 105



white	9021
pearl white	9021w
light grey	9021g
pack.unit: 25	

Cover frame 2-way with gasket

- Dimensions: 195 x 105



white	9022
pearl white	9022w
light grey	9022g
pack.unit: 25	

Plaster Cover

903

pack.unit: 25



Locking

	901026
simultaneous locking	901025
pack.unit: 1	



Cat.No.

Blank flange for surface socket and flush socket* as accessories

*) assembly only possible with frame cover

white	tf9092
pearl white	tf9092w
light grey	tf9092g
pack.unit: 25	



Flange adapter for surface socket and flush socket* as accessories

- for fittings with flange size 75x75mm and fixing center 60x60mm

*) assembly only possible with frame cover

white	tf9091
pearl white	tf9091w
light grey	tf9091g
pack.unit: 25	



e.g. with flange socket outlet 325-6f7



Surface socket

- incl. screws 4 pcs.

white	86300
pearl white	86300w
light grey	86300g
pack.unit: 10	



Flush socket

- incl. screws 4 pcs.

light grey	88300
pack.unit: 10	



Installation help:
Connection device for 1-way frame

Sliding connection for 2-way frame



Design Socket Advantages



**Fast and easy
installation of the lock
by loose locking outbreak**



**Inscription field as standard
incl. paper insert**



**Flange can be rotated by 180° -
straight and sloping design
all in one!**



**Screw type terminal – for wiring
through**

- side cable entrance for double contacting
- wiring through

PCE

Connection
to the future

www.pcelectric.at **PC Electric GesmbH**

Diesseits 145

4973 St. Martin im Innkreis

AUSTRIA

TEL +43 7751 61220

FAX +43 7751 6969

office@pcelectric.at