

1122.2  
RK 95 BG  
RK 95 BG



Feed-through terminal, Screw connection, Mounting type: Mounting rail TS 35/7.5 and TS 32, Rated cross-section: 95 mm<sup>2</sup>, Width: 25 mm, Colour: Beige

## Business data

Product description	Feed-through terminal
Packaging unit	10
Quantity unit	PC
Weight per piece (not including packaging)	179
Weight per piece (including packaging)	189.6
Unit of weight	G
Customs number	85369010
Country of origin	DE

**1122.2**  
**RK 95 BG**  
**RK 95 BG**

## Technical Data

---

### Dimensions

---

Length	84 mm
Width	25 mm
Height TS 35/7.5	88.5 mm
Height TS 32	94 mm

### Ratings

---

Rated voltage	1000 V
Rated current	232 A
Rated cross-section	95 mm <sup>2</sup>
Rated impulse voltage	8 kV
Overvoltage category	III
Contamination degree	3

## 1122.2 RK 95 BG RK 95 BG

### Technical Data

---

#### Connection data

Connection principle	Screw connection
Connection position	Lateral
Connections	2
Number of terminals per level	2
Number of levels	1
Wire cross-section single-core (rigid) / stranded, min.	25 mm <sup>2</sup>
Wire cross-section single core (rigid)/stranded, max.	95 mm <sup>2</sup>
Wire cross-section stranded, min.	25 mm <sup>2</sup>
Wire cross-section stranded, max.	95 mm <sup>2</sup>
Wire cross-section stranded with wire-end ferrules, min.	25 mm <sup>2</sup>
Wire cross-section stranded with wire-end ferrules, max.	95 mm <sup>2</sup>
Wire cross-section AWG, min.	2
Wire cross-section AWG, max.	4/0
Stripping length	30 mm
Screw head	Inner hex (Allen)
Screw threading	M 8
Tightening torque, min.	6 Nm
Tightening torque, max.	12 Nm

**1122.2**  
**RK 95 BG**  
**RK 95 BG**

## Technical Data

---

### Materials

---

Insulation housing	Polyamide 6.6
Flammability class UL 94	V-2
Working temperature, min.	-40 °C
Working temperature, max.	105 °C

### Further technical data

---

Mounting type	Mounting rail TS 35/7.5 and TS 32
Gauge plug acc. to EN 60 947-1	B12
Banded wire up to	16,6 x 6,0 mm

**1122.2**  
**RK 95 BG**  
**RK 95 BG**

## Approvals

---

### Standards and regulations

---

EAC approval	TR ZU 004/2011
--------------	----------------

EAC approval granted	✓
----------------------	---

### CSA approval

---

CSA approval	C22.2 No 158
--------------	--------------

CSA approval granted	✓
----------------------	---

CSA Usegroup C: rated voltage	600 V
-------------------------------	-------

CSA Usegroup C: rated current	230 A
-------------------------------	-------

CSA wire cross-section AWG, min.	2
----------------------------------	---

CSA wire cross-section AWG, max.	4/0
----------------------------------	-----

CSA stripping length	30 mm
----------------------	-------

### CSAus approval

---

CSAus approval	UL 1059
----------------	---------

CSAus approval granted	✓
------------------------	---

CSAus Usegroup C: rated voltage	600 V
---------------------------------	-------

CSAus Usegroup C: rated current	230 A
---------------------------------	-------

CSAus wire cross-section AWG, min.	2
------------------------------------	---

**1122.2**  
**RK 95 BG**  
**RK 95 BG**

## Approvals

---

### CSAus approval

---

CSAus wire cross-section AWG, max.	4/0
CSAus stripping length	30 mm

---

### German Lloyd approval

---

GL approval	IEC 60947-7-1
GL approval granted	✓
GL rated voltage	600 V
GL rated current	230 A
GL rated cross-section	95 mm <sup>2</sup>
GL environmental category	C

---

## 1122.2 RK 95 BG RK 95 BG

### Approvals

---

#### KEMA KEUR approval

KEMA KEUR approval	EN 60947-7-1
KEMA KEUR approval granted	✓
KEMA rated voltage	1000 V
KEMA rated current	232 A
KEMA rated impulse voltage	12 kV
KEMA wire cross-section single core (rigid), min.	25 mm <sup>2</sup>
KEMA wire cross-section single-core (rigid), max.	95 mm <sup>2</sup>
KEMA wire cross-section stranded, min.	25 mm <sup>2</sup>
KEMA wire cross-section stranded, max.	95 mm <sup>2</sup>
KEMA stripping length	30 mm
KEMA torque, min.	8 Nm
KEMA torque, max.	12 Nm

**1122.2**  
**RK 95 BG**  
**RK 95 BG**

## Approvals

---

### UL Recognized

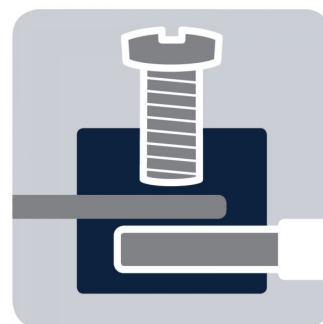
UL Recognized	UL 1059
UL Recognized granted	✓
UL Usegroup B: rated voltage	600 V
UL Usegroup B: rated current	230 A
UL Usegroup C: rated voltage	600 V
UL Usegroup C: rated current	230 A
UL wire cross-section single-core (rigid) AWG, min.	2
UL wire cross-section single-core (rigid) AWG, max.	4/0
UL wire cross-section stranded AWG, min.	2
UL wire cross-section stranded AWG, max.	4/0
UL torque	89 Lb In
UL wire material	Cu
UL factory wiring	✓



1122.2  
RK 95 BG  
RK 95 BG

Media

---



**M8**



**EAC**



1122.2

RK 95 BG

RK 95 BG

Media

---



1122.2  
RK 95 BG  
RK 95 BG

## Accessories

---

### Cover

---



Cover, Length: 59 mm, Width: 15 mm, Colour: Yellow

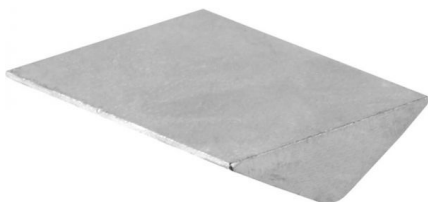
### In general

Order number	Article designation	GTIN (EAN)	Packaging unit
2804.0	AD 1/95/B	4044211055356	20 PC

---

### Insertion profile

---



Inlay plate, Colour: natural

### In general

Order number	Article designation	GTIN (EAN)	Packaging unit
2275.0	EP 95	4044211050825	10 PC

---

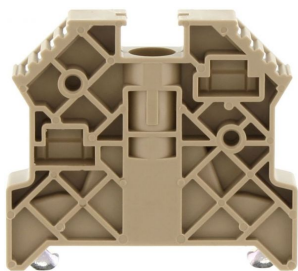
1122.2  
RK 95 BG  
RK 95 BG

## Accessories

---

### End bracket

---



End stop, Mounting type: Mounting rail TS 35/7.5,  
Width: 9.5 mm, Colour: Beige

### In general

Order number	Article designation	GTIN (EAN)	Packaging unit
2828.0	ES 35/K/ST	4044211055547	50 PC

---

### Allan key

---



Inner hex key with bare blade

### In general

Order number	Article designation	GTIN (EAN)	Packaging unit
2772.0	ISKS 6	4044211055028	1 PC

---

**1122.2**  
**RK 95 BG**  
**RK 95 BG**

## Accessories

---

### Measurement pick-off terminal

---



Measurement pick-off terminal, Screw connection,  
Mounting type: On base, Rated cross-section: 10 mm<sup>2</sup>,  
Width: 10 mm, Colour: Beige

### In general

Order number	Article designation	GTIN (EAN)	Packaging unit
1123.2	MAG 95	4044211080938	10 PC

---

### Insulated cross connector

---



External insulated cross-connector, No. of poles: 2,  
Mounting type: Plug in, Width: 44.86 mm, Rated  
current: 232 A; Colour: Yellow

### In general

Order number	Article designation	GTIN (EAN)	Packaging unit
2765.2	AQI 2/95	4044211054953	5 PC

---

**1122.2**  
**RK 95 BG**  
**RK 95 BG**

## Accessories

---

### Insulated cross connector

---



External insulated cross-connector, No. of poles: 3,  
Mounting type: Plug in, Width: 70.44 mm, Rated  
current: 232 A; Colour: Yellow

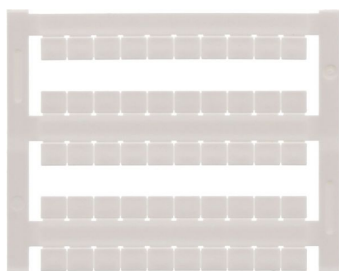
### In general

Order number	Article designation	GTIN (EAN)	Packaging unit
2766.2	AQI 3/95	4044211054960	5 PC

---

### Quick-marking

---



Terminal marker / Pocket Maxicard, Length: 5 mm,  
Width: 6 mm, Colour: White

### In general

Order number	Article designation	GTIN (EAN)	Packaging unit
4702.7	PMC SB 6/50 WH	4044211089986	500 PC

---