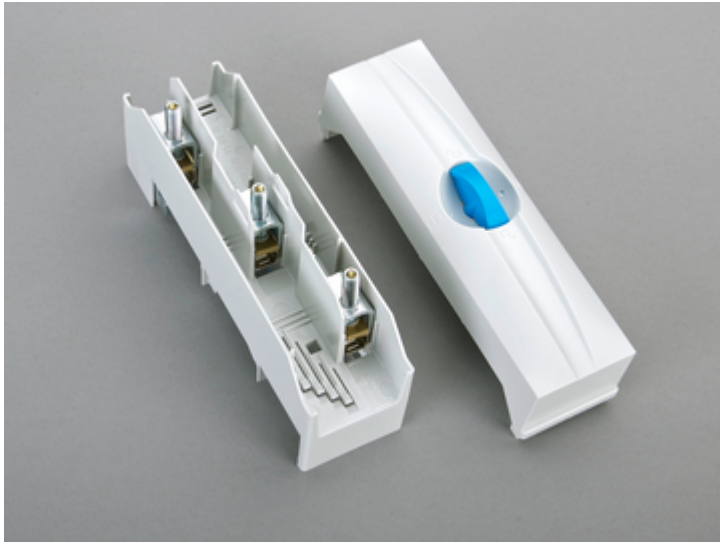


Connecting terminal plate, 3 pole (01 240)



Description

Article

Part No.: 01 240

CRITO[®] 60Classic

Connecting terminal plate, 3 pole

6 - 50 mm², AWG 10 - 2/0, la. Cu. 7x4 bis 9x10

for busbars 12, 15, 20, 25, 30 x 5, 10 and section busbars

System

60Classic

Product group 07

Subgroup 42

pack size 1

EAN 4021267012403

Advantages of the product

Terminals can be remove for connection of uncut conductors

Catalog page 2015 : 2/6

eCl@ss 6.1 27141146
eCl@ss 7.1 27141146
ETIM 4.0 EC000001
ETIM 5.0 EC000001

Approvals

Standards

IEC 61439-1:2011
IEC 60999-1:1999
IEC 60999-2:2003

Approvals

CSA, UL, Germanischer Lloyd



for UL feeder circuits >250V

Type number: 240-L

UL file: E123577, UL category (for USA): NMTR <http://www.ul.com>

UL file: E123577, UL category (for Canada): NMTR7 <http://www.ul.com>

CSA file: 110285, CSA class: 3211-37 <http://directories.csa-international.org>

CCC approval: no certification required

Product data

Electrical data

Rated current (IEC): 175 A

Rated voltage (IEC) AC: 690 V

Rated current (UL): 175 A

Rated voltage (UL) AC: 600 V

current carrying capacity (IEC) max.: 300 A

rated isolation voltage U_i (AC): 800
V
Rated surge voltage U_{imp} : 6 kV
max. permitted voltage (IEC) AC: 800
V
max. permitted voltage (IEC) DC: 800
V

rated peak withstand current I_{pk} : 40.5 kA

Mechanical data

W x H x D: 54 x 200 x 84
Weight: 45.1 kg/100
Poles: 3-pole
for busbars: 12, 15, 20, 25, 30 x 5, 10 and section busbars

Terminal points

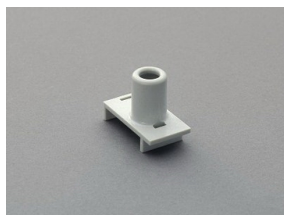
6 - 50 (70) mm² / AWG 10 - AWG 2/0
flexible cables, directly or with wire-end ferrule,
stranded round cables
la. Cu 7x4 - 9x6

(flexible cables of maximum cross-section may not fit when using wire-end ferrule)

Material properties

Main body: temperature stability 125°C,
self-extinguishing in acc. to UL 94,
creepage resistance CTI 200,
halogen-free
Cover: temperature stability 125°C,
self-extinguishing in acc. to UL 94,
creepage resistance CTI 200,
halogen-free

Accessories



01 300

single cover for terminals
for terminal plate 01 240