

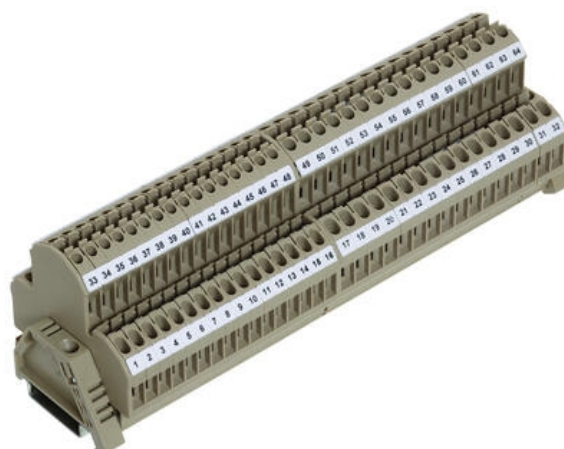
DOUBLE DECK TERMINALS - RKD 2.5-4MM²

RKD, RKDG

1206.1

RKD 2.5 Green, 2.5mm² Double deck, multi-foot

- Screw cross connectors
- Temperature resistance -40 °C...+105 °C
- Polyamide 6.6 UL94-V2
- Same level screw option
- Versions with electronic components fitted



PRODUCT DESCRIPTION

SPECIFICATIONS

Approvals	UL, KEMA KUR
Color	Green
Connections	2 x 2
Contamination degree	3
Country of origin	CZ
Cross connect channels	2
Cross section single wire from	0.2
Cross section single wire to	4
Cross section stranded wire from	0.2
Cross section stranded wire to	4
Cross section stranded with ferrule from	0.2
Cross section stranded with ferrule to	2.5
Cross-Section	2.5
Flamklass	UL94-V2
Height TS 32	65.5
Height TS 35/7.5	61
KEMA KEUR test standard	EN 60947-7-1:2009
Length	60.2

Number of levels	2
Number of test pick off options	1
Operating temperature from	-40
Operating temperature to	105
Overvoltage category	III
Pack Size	100
Plug gauge acc. EN 60 947-1	A3
Rated Current IEC	24
Rated impulse voltage	6
Rated Voltage IEC	500
Rated wire cross section from (AWG)	22
Rated wire cross section to (AWG)	14
Screw size	M 2,5
Stripping Length	7
Tariff code	85369010
Torque max	0.8
Torque Min	0.4
UL test standard	UL 1059
Weight	11
Width	5