

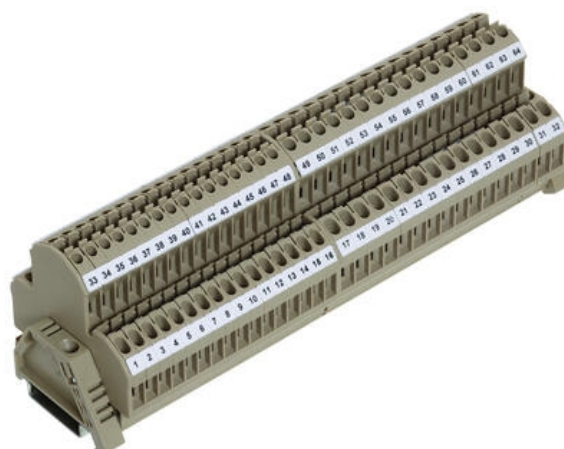
## DOUBLE DECK TERMINALS - RKD 2.5-4MM<sup>2</sup>

RKD, RKDG

1127.2

Terminal Block RKD 2.5sq Double Deck Beige

- Screw cross connectors
- Temperature resistance -40 °C...+105 °C
- Polyamide 6.6 UL94-V2
- Same level screw option
- Versions with electronic components fitted



### PRODUCT DESCRIPTION

### SPECIFICATIONS

Approvals	CSA, CSA US, KEMA KUR
Color	Beige
Connections	2 x 2
Contamination degree	3
Country of origin	CZ
Cross connect channels	2
Cross section single wire from	0.2
Cross section single wire to	4
Cross section stranded wire from	0.2
Cross section stranded wire to	4
Cross section stranded with ferrule from	0.2
Cross section stranded with ferrule to	2.5
Cross-Section	2.5
CSA test standard	C22.2 No 158
CSAus test standard	UL 1059
Flamklass	UL94-V2
Height TS 35/7.5	56
KEMA KEUR test standard	EN 60947-7-1:2009

Length	60.2
Number of levels	2
Number of test pick off options	1
Operating temperature from	-40
Operating temperature to	105
Overvoltage category	III
Pack Size	100
Plug gauge acc. EN 60 947-1	A3
Rated Current CSA	20
Rated current CSAus	20
Rated Current IEC	24
Rated impulse voltage	6
Rated wire cross section from (AWG)	22
Rated wire cross section to (AWG)	14
Rated voltage CSAus	300
Rated Voltage IEC	500
Screw size	M 2,5
Stripping Length	7
Tariff code	85369010
Torque max	0.8
Torque Min	0.4
Weight	10.84
Width	5
Voltage CSA	300