



# IDEM - TONGUE INTERLOCK SAFETY SWITCHES – K-15

K-15

207009PF  
K-15 QC M12 8way '3NC' - PF actuator

- 4 Actuator entry positions with a rotatable head. Plastic or stainless steel 316 head options
- Compact body with 3 conduit entries
- 3 pole contact blocks
- 54 mm x 86 mm 40mm fixing
- IP67 ingress protection rating



## Product description

### Features

- The K-15 Safety Interlock switch is designed to provide position interlock detection for moving guards
- They are designed to fit to the leading edge of sliding, hinged or lift off machine guards
- They offer a compact 86mm long body to fit to applications where space is restricted, yet offer 3 pole contacts and choice of 3 conduit entries for wiring versatility
- The head can be rotated to give 4 actuator entry positions

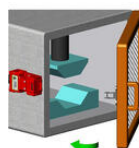
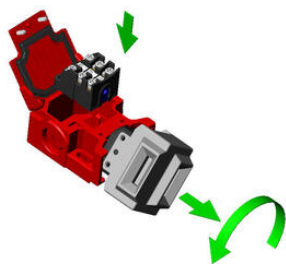


- Designed with a hinged lid to fit replacable contact blocks
- Flexible actuators are available and the K-15 is available with a stainless steel head

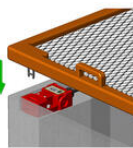
## Specifications

Actuator	Plastic flexible
Annual usage	8 cycles per hour/24 hours per day/365 days
Approvals	ISO 14119, EN60947-5-1, EN60204-1, ISO 13849-1, EN62061, UL 508
Atex approved	No





Hinged Guard



Lift Off Guard



Sliding Guard



A



F



PF

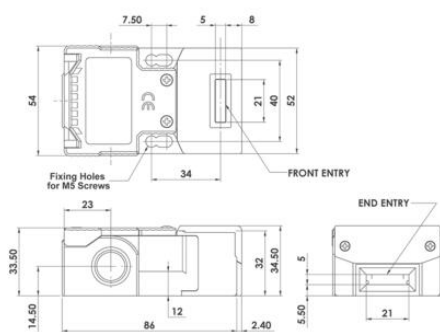


HF

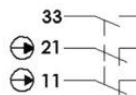


HFH

Heavy Duty Flexible Stainless Steel



Slow Make Break 2NC 1NO



Slow Make Break 3NC

