



# IDEM - TONGUE INTERLOCK SAFETY SWITCHES – K-15

K-15

207009F  
K-15 QC M12 8way '3NC' - flat actuator

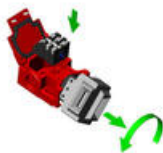
- 4 Actuator entry positions with a rotatable head. Plastic or stainless steel 316 head options
- Compact body with 3 conduit entries
- 3 pole contact blocks
- 54 mm x 86 mm 40mm fixing
- IP67 ingress protection rating



## Product description

### Features

- The K-15 Safety Interlock switch is designed to provide position interlock detection for moving guards
- They are designed to fit to the leading edge of sliding, hinged or lift off machine guards
- They offer a compact 86mm long body to fit to applications where space is restricted, yet offer 3 pole contacts and choice of 3 conduit entries for wiring versatility
- The head can be rotated to give 4 actuator entry positions

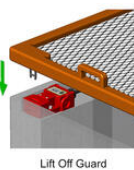
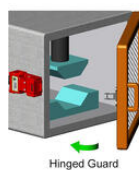
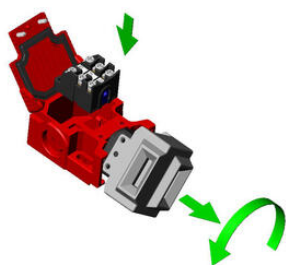


- Designed with a hinged lid to fit replacable contact blocks
- Flexible actuators are available and the K-15 is available with a stainless steel head

## Specifications

Actuator	Flat
Annual usage	8 cycles per hour/24 hours per day/365 days
Approvals	ISO 14119, EN60947-5-1, EN60204-1, ISO 13849-1, EN62061, UL 508
Atex approved	No

<b>Central Material</b>	Polyester
<b>Conduit entry</b>	M12 8 Pole
<b>Contacts</b>	3NC
<b>Head material</b>	Polyester
<b>IP Class</b>	IP67
<b>Maximum approach / withdrawal speed</b>	600
<b>Mechanical reliability B10d</b>	2.5 x 10 <sup>6</sup> operations at 100mA load
<b>Mounting</b>	2 x M5
<b>MTTFd</b>	356 years
<b>Operating temperature</b>	-25..80°C
<b>PFHd</b>	3.44 x 10 <sup>-8</sup>
<b>PL</b>	e acc. ISO13849-1
<b>Rated insulation voltage</b>	500V ac
<b>SIL</b>	3 acc. EN62061
<b>Thermal current (I<sub>th</sub>)</b>	5
<b>Travel for positive opening</b>	8
<b>Withstand voltage</b>	2500V ac

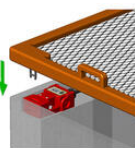
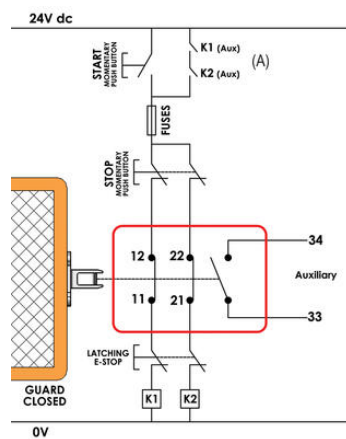




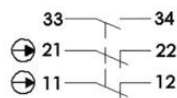
Slow Make Break 2NC 1NO



Slow Make Break 3NC



Slow Make Break 2NC 1NO



Slow Make Break 3NC

