



IDEM - TONGUE INTERLOCK SAFETY SWITCHES – K-15

K-15

207005HFH
K-15 ½NPT '3NC' - HFH actuator

- 4 Actuator entry positions with a rotatable head. Plastic or stainless steel 316 head options
- Compact body with 3 conduit entries
- 3 pole contact blocks
- 54 mm x 86 mm 40mm fixing
- IP67 ingress protection rating



Product description

Features

- The K-15 Safety Interlock switch is designed to provide position interlock detection for moving guards
- They are designed to fit to the leading edge of sliding, hinged or lift off machine guards
- They offer a compact 86mm long body to fit to applications where space is restricted, yet offer 3 pole contacts and choice of 3 conduit entries for wiring versatility
- The head can be rotated to give 4 actuator entry positions

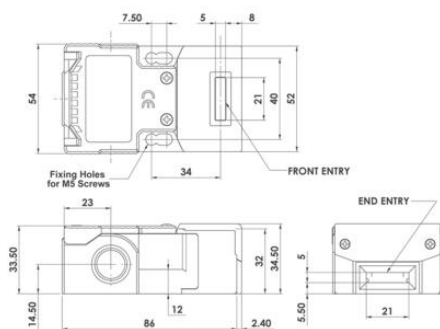
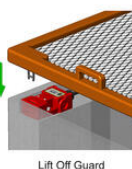


- Designed with a hinged lid to fit replacable contact blocks
- Flexible actuators are available and the K-15 is available with a stainless steel head

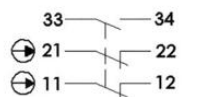
Specifications

Actuator	Heavy duty s/steel
Annual usage	8 cycles per hour/24 hours per day/365 days
Approvals	ISO 14119, EN60947-5-1, EN60204-1, ISO 13849-1, EN62061, UL 508
Atex approved	No

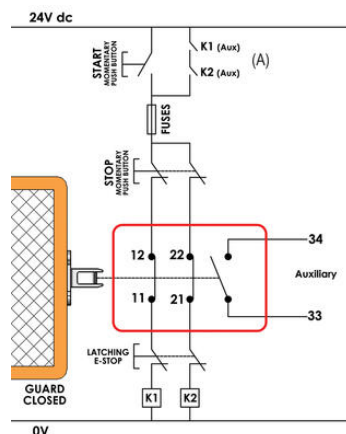
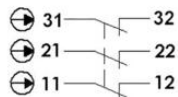
Central Material	Polyester
Conduit entry	1/2" NPT
Contacts	3NC
Head material	Polyester
IP Class	IP67
Maximum approach / withdrawal speed	600
Mechanical reliability B10d	2.5 x 10 ⁶ operations at 100mA load
Mounting	2 x M5
MTTFd	356 years
Operating temperature	-25..80°C
PFHd	3.44 x 10 ⁻⁸
PL	e acc. ISO13849-1
Rated insulation voltage	500V ac
SIL	3 acc. EN62061
Thermal current (Ith)	5
Travel for positive opening	8
Withstand voltage	2500V ac

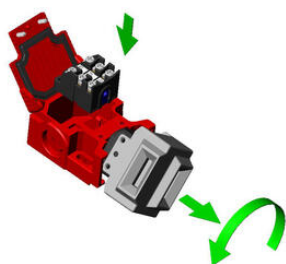


Slow Make Break 2NC 1NO

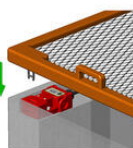


Slow Make Break 3NC





Hinged Guard



Lift Off Guard



Sliding Guard



A



F



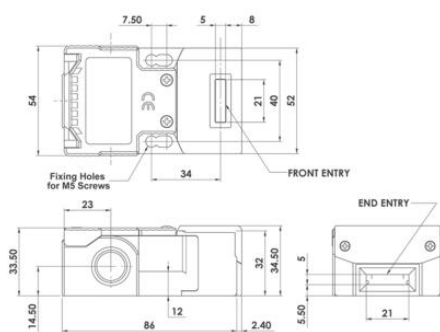
PF



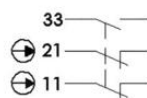
HF



HFH



Slow Make Break 2NC 1NO



Slow Make Break 3NC

