



IDEM SWITCH WITH IDIS-1 KEY

190060PF

IDIS-1 QC 1/2UNF 6way '1NC 1NO' Snap - PF actuator

- Perfect for small covers
- 8 key entry positions
- Small dimensions
- 3 different contact configurations
- Degree of protection IP67



Product description

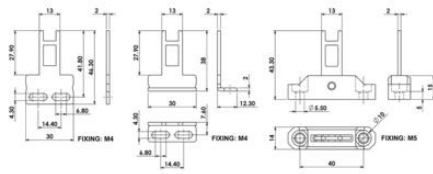
IDIS-1 is a small and very flexible key switch, suitable for smaller flaps. Thanks to the rotating head, it has eight key entry positions. The switch is available with a flat, angled or flexible wrench. The IDIS-1 switch has a standard spacing between the mounting holes - 22 mm. As long as the key is in the switch (cover closed), the circuit breaker safety contacts are closed.

Specifications

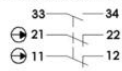
| | |
|--|---|
| Actuator | Plastic flexible |
| Annual usage | 8 cycles per hour/24 hours per day/365 days |
| Approvals | ISO 14119, EN60947-5-1, EN60204-1, ISO 13849-1, EN62061, UL 508 |
| Atex approved | No |
| Central Material | Polyester |
| Conduit entry | 1/2"UNF 6 Pole |
| Contacts | 1NC 1NO |
| IP Class | IP67 |
| Maximum approach / withdrawal speed | 600 |
| Mechanical reliability B10d | 2.5 x 10 ⁶ operations at 100mA load |

| | |
|-----------------------------|-----------------------|
| Mounting | 2 x M4 |
| MTTFd | 356 years |
| PFHd | 3.44×10^{-8} |
| PL | e acc. ISO13849-1 |
| Rated insulation voltage | 600V ac |
| SIL | 3 acc. EN62061 |
| Thermal current (Ith) | 5 |
| Travel for positive opening | 6 |
| Withstand voltage | 2500V ac |





Slow Make Break 2NC 1NO



Slow Make Break 3NC



Snap Action 1NC 1NO

