



## IDEM SWITCH WITH IDIS-1 KEY

190058

IDIS-1 M20 '1NC 1NO' Snap - no actuator

- Perfect for small covers
- 8 key entry positions
- Small dimensions
- 3 different contact configurations
- Degree of protection IP67



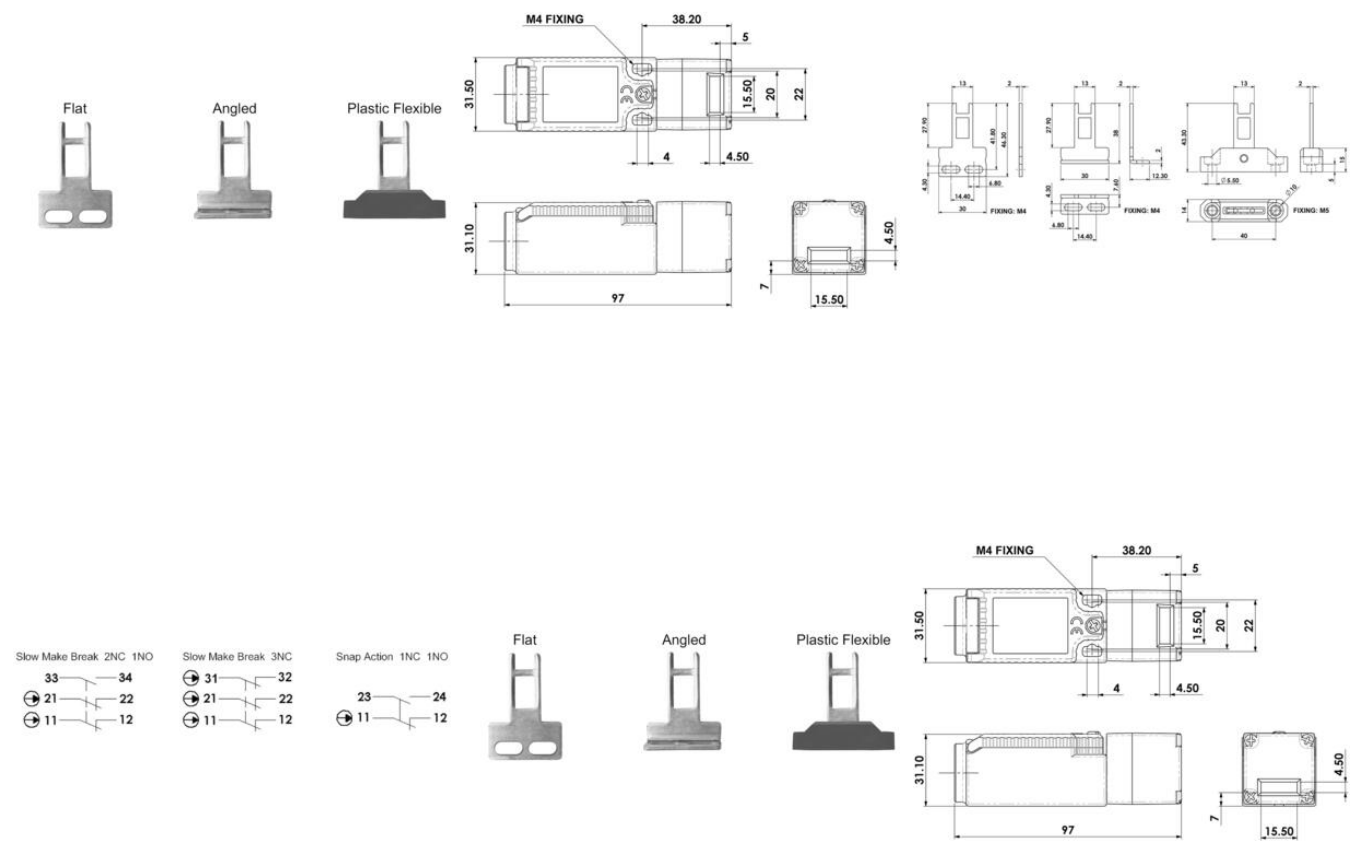
### Product description

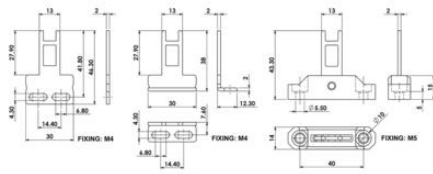
IDIS-1 is a small and very flexible key switch, suitable for smaller flaps. Thanks to the rotating head, it has eight key entry positions. The switch is available with a flat, angled or flexible wrench. The IDIS-1 switch has a standard spacing between the mounting holes - 22 mm. As long as the key is in the switch (cover closed), the circuit breaker safety contacts are closed.

### Specifications

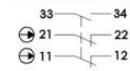
<b>Actuator</b>	Not included
<b>Annual usage</b>	8 cycles per hour/24 hours per day/365 days
<b>Approvals</b>	ISO 14119, EN60947-5-1, EN60204-1, ISO 13849-1, EN62061, UL 508
<b>Atex approved</b>	No
<b>Central Material</b>	Polyester
<b>Conduit entry</b>	M20
<b>Contacts</b>	1NC 1NO
<b>IP Class</b>	IP67
<b>Maximum approach / withdrawal speed</b>	600
<b>Mechanical reliability B10d</b>	2.5 x 10 <sup>6</sup> operations at 100mA load

Mounting	2 x M4
MTTFd	356 years
PFHd	$3.44 \times 10^{-8}$
PL	e acc. ISO13849-1
Rated insulation voltage	600V ac
SIL	3 acc. EN62061
Thermal current (I <sub>th</sub> )	5
Travel for positive opening	6
Withstand voltage	2500V ac

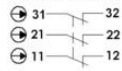




Slow Make Break 2NC 1NO



Slow Make Break 3NC



Snap Action 1NC 1NO

