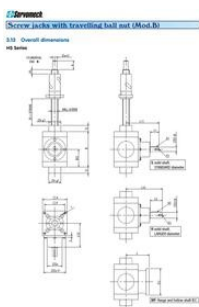


A10
Starrett Arbor (For 32-152Mm Holesaw)

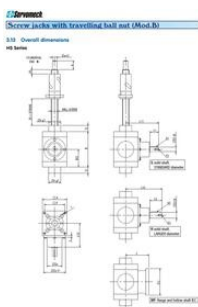


- ## Product description

Long life synthetic oil lubricated bevel gear GLEASON spiral tooth system. High efficiency and low noise functioning Bevel gear ratio from 1:1 to 1:4 Angular backlash on output shaft max 10' (available on request reduced backlash) Input speed up to 3.000 rpm Ball screw drive, travelling nut (Model B) Available accessories: Incremental or absolute encoder for positioning control Prepared for IEC standard motors, AC or DC motors, and brushless servomotors (special motor flange adapter available upon request) Protective bellows Safety nut More option upon request: Lubricants for high or low ambient temperature Lubricants suitable for food industry NB. Due to the technical nature of these product, detailed application information is required before any quotation can be offered.



| Screw jacks with travelling ball nut (Model 8) | | | | | | |
|--|-------|-------|-------|--------|--------|--------|
| 810 Overall dimensions | | | | | | |
| | HS 10 | HS 20 | HS 30 | HS 100 | HS 300 | HS 500 |
| 1 | 100 | 150 | 200 | 300 | 450 | 600 |
| 2 | 100 | 150 | 200 | 300 | 450 | 600 |
| 3 | 100 | 150 | 200 | 300 | 450 | 600 |
| 4 | 100 | 150 | 200 | 300 | 450 | 600 |
| 5 | 100 | 150 | 200 | 300 | 450 | 600 |
| 6 | 100 | 150 | 200 | 300 | 450 | 600 |
| 7 | 100 | 150 | 200 | 300 | 450 | 600 |
| 8 | 100 | 150 | 200 | 300 | 450 | 600 |
| 9 | 100 | 150 | 200 | 300 | 450 | 600 |
| 10 | 100 | 150 | 200 | 300 | 450 | 600 |
| 11 | 100 | 150 | 200 | 300 | 450 | 600 |
| 12 | 100 | 150 | 200 | 300 | 450 | 600 |
| 13 | 100 | 150 | 200 | 300 | 450 | 600 |
| 14 | 100 | 150 | 200 | 300 | 450 | 600 |
| 15 | 100 | 150 | 200 | 300 | 450 | 600 |
| 16 | 100 | 150 | 200 | 300 | 450 | 600 |
| 17 | 100 | 150 | 200 | 300 | 450 | 600 |
| 18 | 100 | 150 | 200 | 300 | 450 | 600 |
| 19 | 100 | 150 | 200 | 300 | 450 | 600 |
| 20 | 100 | 150 | 200 | 300 | 450 | 600 |
| 21 | 100 | 150 | 200 | 300 | 450 | 600 |
| 22 | 100 | 150 | 200 | 300 | 450 | 600 |
| 23 | 100 | 150 | 200 | 300 | 450 | 600 |
| 24 | 100 | 150 | 200 | 300 | 450 | 600 |
| 25 | 100 | 150 | 200 | 300 | 450 | 600 |
| 26 | 100 | 150 | 200 | 300 | 450 | 600 |
| 27 | 100 | 150 | 200 | 300 | 450 | 600 |
| 28 | 100 | 150 | 200 | 300 | 450 | 600 |
| 29 | 100 | 150 | 200 | 300 | 450 | 600 |
| 30 | 100 | 150 | 200 | 300 | 450 | 600 |
| 31 | 100 | 150 | 200 | 300 | 450 | 600 |
| 32 | 100 | 150 | 200 | 300 | 450 | 600 |
| 33 | 100 | 150 | 200 | 300 | 450 | 600 |
| 34 | 100 | 150 | 200 | 300 | 450 | 600 |
| 35 | 100 | 150 | 200 | 300 | 450 | 600 |
| 36 | 100 | 150 | 200 | 300 | 450 | 600 |
| 37 | 100 | 150 | 200 | 300 | 450 | 600 |
| 38 | 100 | 150 | 200 | 300 | 450 | 600 |
| 39 | 100 | 150 | 200 | 300 | 450 | 600 |
| 40 | 100 | 150 | 200 | 300 | 450 | 600 |
| 41 | 100 | 150 | 200 | 300 | 450 | 600 |
| 42 | 100 | 150 | 200 | 300 | 450 | 600 |
| 43 | 100 | 150 | 200 | 300 | 450 | 600 |
| 44 | 100 | 150 | 200 | 300 | 450 | 600 |
| 45 | 100 | 150 | 200 | 300 | 450 | 600 |
| 46 | 100 | 150 | 200 | 300 | 450 | 600 |
| 47 | 100 | 150 | 200 | 300 | 450 | 600 |
| 48 | 100 | 150 | 200 | 300 | 450 | 600 |
| 49 | 100 | 150 | 200 | 300 | 450 | 600 |
| 50 | 100 | 150 | 200 | 300 | 450 | 600 |
| 51 | 100 | 150 | 200 | 300 | 450 | 600 |
| 52 | 100 | 150 | 200 | 300 | 450 | 600 |
| 53 | 100 | 150 | 200 | 300 | 450 | 600 |
| 54 | 100 | 150 | 200 | 300 | 450 | 600 |
| 55 | 100 | 150 | 200 | 300 | 450 | 600 |
| 56 | 100 | 150 | 200 | 300 | 450 | 600 |
| 57 | 100 | 150 | 200 | 300 | 450 | 600 |
| 58 | 100 | 150 | 200 | 300 | 450 | 600 |

[illegible]