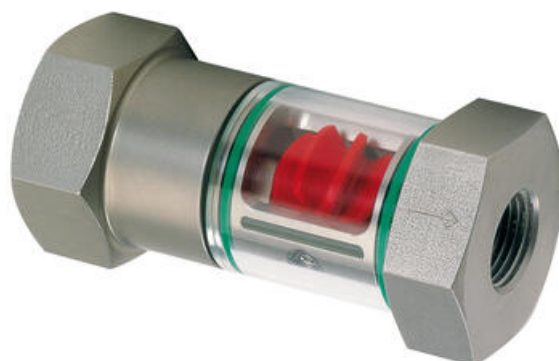


## HONSBERG - WR1 SERIES FLOW INDICATOR

Sight glass/rotor

WR1-008GMW  
0,7..4 l/min H<sub>2</sub>O, G1/4F, Brass

- Ranges covering 0.7..100 l/min H<sub>2</sub>O
- Ranges covering 18 to 700 l/min air (1 bar)
- 16 bar max
- Brass connections



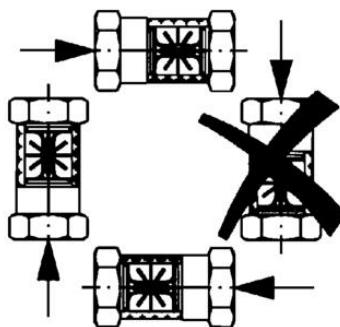
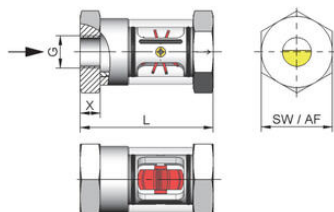
### Product description

The WR1 mechanical flow indicator is designed for use with water, oils and air/gases to show a quantitative flow display through a spinning rotor.

### Specifications

<b>Connection</b>	G1/4 female
<b>Flow Max l/min Double</b>	4
<b>Function</b>	Rotor
<b>Material of connection</b>	Nickel-plated brass
<b>Material of glass tube</b>	Borosilicate glass
<b>Material of rotor</b>	POM
<b>Material of seals</b>	NBR
<b>Materials Wipers</b>	NBR
<b>Media</b>	Water, oil
<b>Min flow rate for rotor (oil 40 Cst) l/min</b>	1.5
<b>Min flow rate for rotor (oil 41-150 Cst) l/min</b>	2.7
<b>Min flow rate for rotor (water) l/min</b>	0.7
<b>Pressure drop</b>	0.25 bar at maximum flow
<b>Pressure Range Max</b>	16
<b>Temperature range of media from</b>	0
<b>Temperature range of media to</b>	100
<b>Type of flow component</b>	Flow indication
<b>Weight</b>	0.35

G	Types	L	SW	X	Weight kg
G 1/4	WR1-008G.	71	36	9	0.35
G 3/8	WR1-010G.				
G 1/2	WR1-015G.	86	46	13	0.65
G 3/4	WR1-020G.	94		16	
G 1	WR1-025G.	104			
G 1 1/4	WR1-032G.	120	65	19	1.60
G 1 1/2	WR1-040G.	130		20	1.70



G	Types	L	SW	X	Weight kg
G 1/4	WR1-008G.	71	36	9	0.35
G 3/8	WR1-010G.				
G 1/2	WR1-015G.	86	46	13	0.65
G 3/4	WR1-020G.	94		16	
G 1	WR1-025G.	104			
G 1 1/4	WR1-032G.	120	65	19	1.60
G 1 1/2	WR1-040G.	130		20	1.70

