

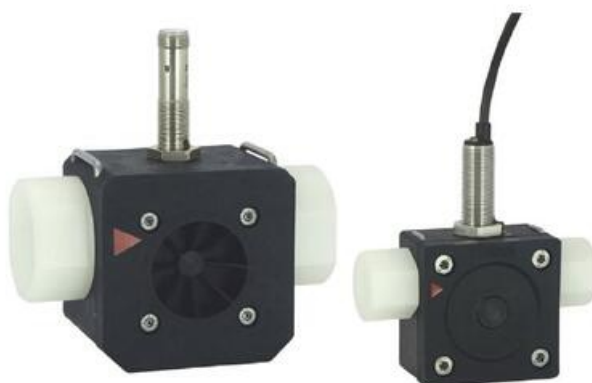
HONSBERG - RRI SERIES FLOW METER

Rotor

RRI-010GVP020E

Flow sensor 3/8", 0,1-1,5l/min, 4-20mA

- For liquids up to 16 bar pressure
- Flow range from 0.1 to 100 l/min. water
- Connection 3/8" or 1"



Product description

Model RRI is a rotor sensor in plastic with inductive reading. The design offers a lot of options in terms of installation as it can be mounted in most locations and does not require any calming section either before or after. It has high resolution and is suitable for accurate measurement of flows of liquids in applications within liquid dosing or accurate volume calculation.

Specifications

Accuracy	± 3% of measurement value
Connection	Internal thread, G 3/8 "
Electrical Connection	2m cable or M12x1, 4-pole
Flow Max l/min Double	1.8
Flow Range Max	1.5
Flow Range Min	0.1
Function	Rotor, inductive sensor
IP Class	IP67
Load Max	200
Material of body	PPS, Questra
Material of connection	PVDF
Material of rotor	PVDF
Material of seals	Viton
Material Stocks	Igilidur X
Materials Clips	Stainless steel 301
Materials Drum	Ceramic
Output	4-20 mA

Power Consumption	10
Pressure drop	Approximately 0.5 bar at maximum flow
Pressure Range Max	16
Repeatability	1
Temperature range of media to	60
Weight	0.2
Viscosity Max	10
Viscosity Min	1
Voltage DC max	30
Voltage DC min	10

