

## HONSBERG - UR3K SERIES FLOW SWITCH

### Paddle

UR3K-020GM085

Paddle switch 3/4" 6-8,5l/m reed switch

- Switching Range 3,5..69 l/min H<sub>2</sub>O
- Water (oils, gases and aggressive media available on request)
- G $\frac{3}{8}$ " up to G2"
- Brass or Stainless Steel Wetted Parts
- Max Pressure 25 bar



### Product description

Model UR is a mechanical flow switch with very low pressure drop. This type of switch is used in applications such as industrial cooling systems. Available in nickel-plated brass and stainless steel.

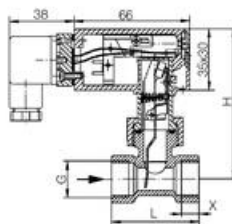
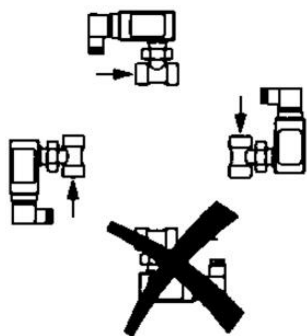
### Special versions

- Stainless
- Version with welding sleeve
- Version with solder connection
- Electrical connector M12x1, 4 pole

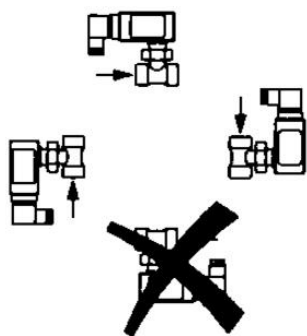
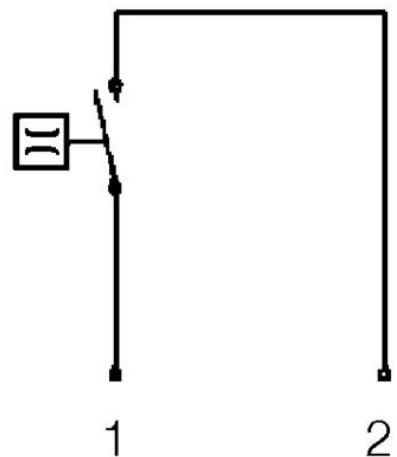
### Specifications

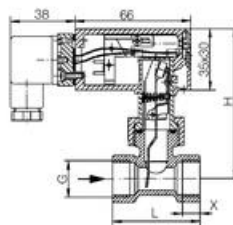
<b>Adjustable Switching Point L / Min Of Water</b>	6-8.5 l / min
<b>Connection</b>	G 3/4 "
<b>Contact Rating Max</b>	50
<b>Deviation max</b>	±15 %
<b>Electrical Connection</b>	DIN43650-A
<b>Flow Max l/min Double</b>	40
<b>Flow Range Max</b>	8.5
<b>Flow Range Min</b>	6
<b>Function</b>	Paddle, Reed Contact, Ending
<b>Hysteresis</b>	Depending on the breaking value, however, at least 0.7 l / min
<b>IP Class</b>	IP65

Material breaker body	POM
Material of body	Nickel-plated brass
Material of connection	Nickel-plated brass
Material of seals	NBR
Materials Paddle	Stainless steel AISI 304, Stainless steel 301
Media	Water (oil or gas on request)
Pressure drop	Approx. 0.01 bar at max. flow
Pressure Range Max	25
Temperature range of media to	110
Type of flow component	Flow Switches
Weight	0.45
Voltage AC max	230



	G"	H mm	L mm	X mm	Weight kg
UR3K-019GM	3/8	87	50	10	0.35
UR3K-019GM	1/2	87	50	10	
UR3K-029GM	3/4	88	50	12	0.35
UR3K-029GM	1	92	50	12	0.40
UR3K-032GM	1 1/4	96	50	12	0.55
UR3K-040GM	1 1/2	99	50	12	0.60
UR3K-050GM	2	108	50	12	1.00
UR3K-019GK	3/8	87	50	10	0.40
UR3K-019GK	1/2	87	50	10	0.41
UR3K-029GK	3/4	88	50	12	0.35
UR3K-029GK	1	92	50	12	0.45
UR3K-032GK	1 1/4	96	50	12	0.55
UR3K-040GK	1 1/2	99	50	12	0.7
UR3K-050GK	2	108	50	12	1





	G"	H mm	L mm	X mm	Weight kg
UR3K-0100M	3/8	87	50	10	0.35
UR3K-0150M	1/2	87	50	10	
UR3K-0200M	3/4	88	50	12	0.35
UR3K-0250M	1	92	50	12	0.40
UR3K-0320M	1 1/4	96	80	12	0.55
UR3K-0400M	1 1/2	99	80	12	0.60
UR3K-0500M	2	108	80	12	1.00
UR3K-0100K	3/8	87	50	10	0.40
UR3K-0150K	1/2	87	50	10	0.41
UR3K-0250K	3/4	88	50	12	0.35
UR3K-0300K	1	92	50	12	0.45
UR3K-0350K	1 1/4	96	80	12	0.55
UR3K-0400K	1 1/2	99	80	12	0.7
UR3K-0500K	2	108	80	12	1

