



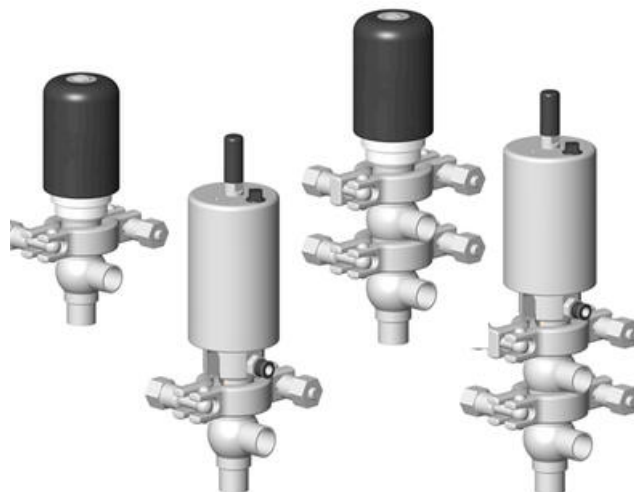
## DEFINOX - DCX 3 & DCX 4 MINI

### Manual & Pneumatic

DE-MU019A12100

DCX4 mini, 3/4" L-L-body, NC pneumatic, PEEK/FKM

- High packing pressure
- Independent and compact body
- Many configuration options
- Possible use on a wide range of applications



#### Product description

Definox Mini Seat Valves.

This seat valve design offers a wide range of options and variants.

Technical advantages:

- From 1/2" to 1"
- Fitted with PEEK plug as standard - inert to chemical products
- Welded or Clamp ends possible
- Ergonomic handle with visual opening indicator
- Elastomer seal available for charged products
- High packing pressure
- Self-contained and compact body with a wide range of configuration options:
- Possible use on a wide range of applications
- Easy and fast maintenance thanks to the clamp assembly

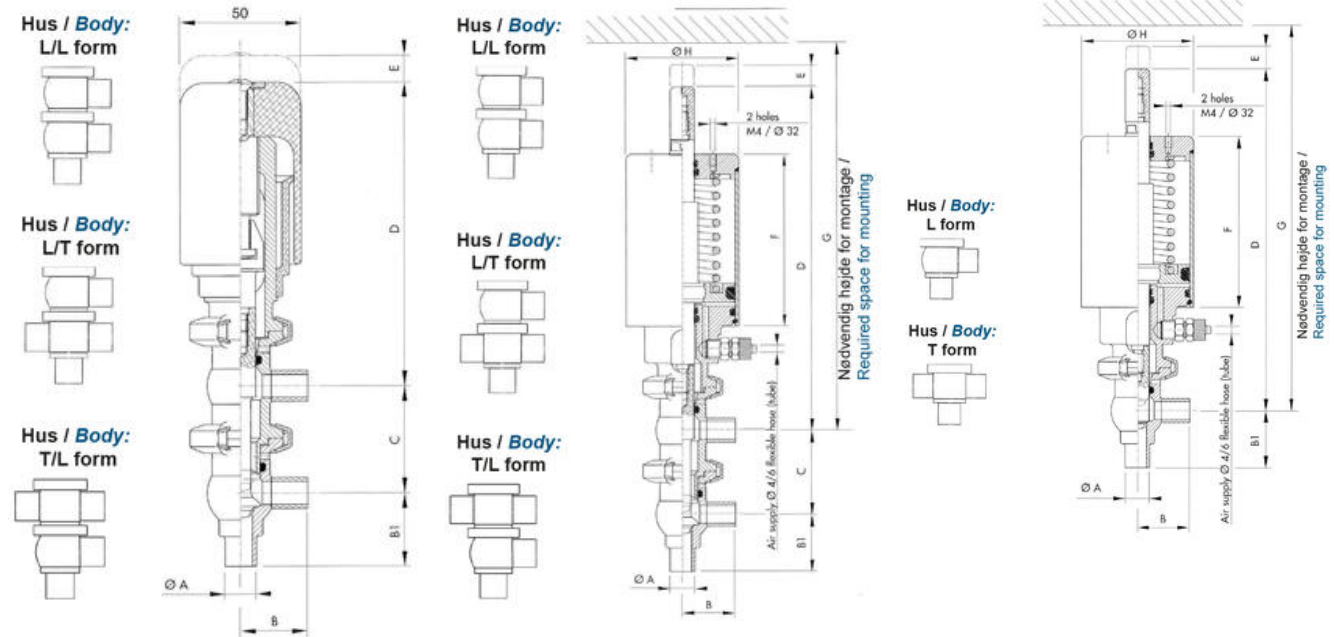
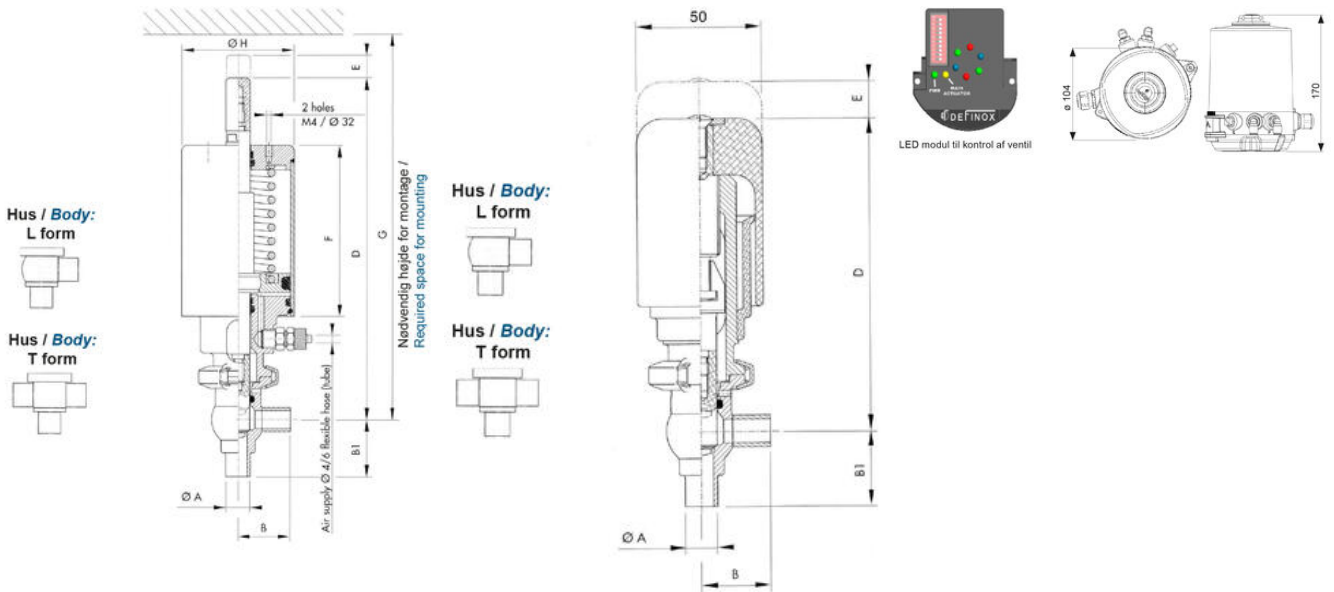
#### Specifications

<b>Certificate</b>	3.1 EN10204
<b>Connection</b>	Weld ends
<b>Description</b>	PEEK PLUG
<b>House</b>	L+L Body
<b>Housing</b>	FKM
<b>Internal Diameter</b>	15.75
<b>Material quality</b>	1.4404
<b>Outer Diameter</b>	19.05
<b>Surface Finish</b>	Indv.: RA 0,8µm Udv.: 1,2µm
<b>Temperature range from</b>	-5

Temperature range to 140

Weight 1.7

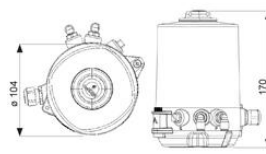
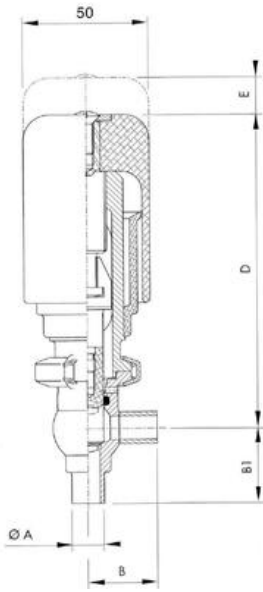
Working Pressure Max 18



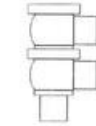
Hus / Body:  
L form



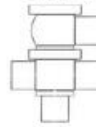
Hus / Body:  
T form



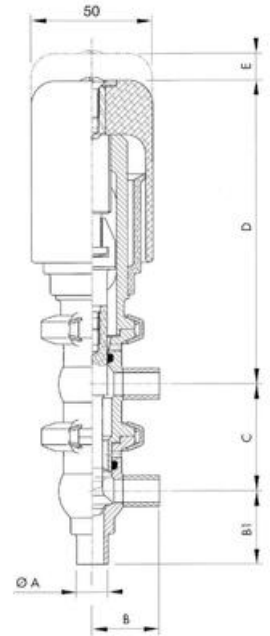
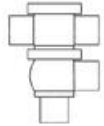
Hus / Body:  
L/L form



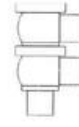
Hus / Body:  
L/T form



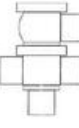
Hus / Body:  
T/L form



Hus / Body:  
L/L form



Hus / Body:  
L/T form



Hus / Body:  
T/L form

