

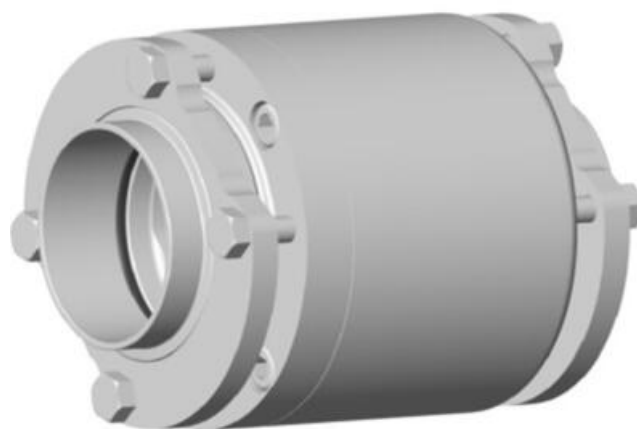


DEFINOX - CHECK VALVE BETWEEN FLANGES

DE-US038A33100

Check valve, 1½", SS 316L/PFA/PTFE

- Designed for a minimal pressure drop
- Vertical mounting for an improved seal
- Quick and easy installation
- Connection: Between Flanges with welding ends
- Sealing types: PFA - FKM - EPDM - PTFE



Product description

Our products are of high quality and design that meet the strongest requirements of process technology and are the ideal solution for Food, Brewery, Cosmetics and Pharmaceutical processes!

Technical Advantages:

- 1/2" - DN 125
- Interior surface roughness $R_a = 0.8 \mu m$
- Vertical mounting for an improved seal and eliminate retention
- Fast and easy disassembly
- Connection: Welding ends
- Multiple packing types: PFA - FKM - EPDM.
- Approvals: 3A - ATEX - DESP - 3.1 - 2.1 - E1935 / 2004 - CE - REACH - ANIA

Specifications

Certificate	3.1 EN10204
Connection	Weld ends between flanges
Design norm	SMS
Exit	90 Mbar
Housing	PFA/PTFE
Internal Diameter	35.6
Material quality	1.4404
Outer Diameter	38
Surface Finish	$RA < 0,8/1,2 \mu m$
Temperature range from	0
Temperature range to	120
Weight	1

