

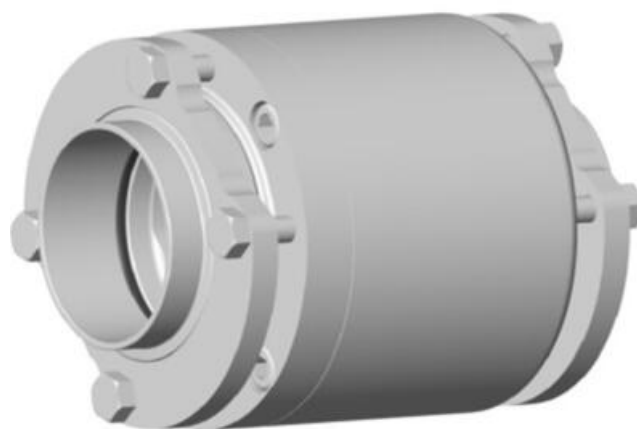


DEFINOX - CHECK VALVE BETWEEN FLANGES

DE-UD080A32100

Check valve, DN80, SS 316L/PFA/FKM

- Designed for a minimal pressure drop
- Vertical mounting for an improved seal
- Quick and easy installation
- Connection: Between Flanges with welding ends
- Sealing types: PFA - FKM - EPDM - PTFE



Product description

Our products are of high quality and design that meet the strongest requirements of process technology and are the ideal solution for Food, Brewery, Cosmetics and Pharmaceutical processes!

Technical Advantages:

- 1/2" - DN 125
- Interior surface roughness $R_a = 0.8 \mu m$
- Vertical mounting for an improved seal and eliminate retention
- Fast and easy disassembly
- Connection: Welding ends
- Multiple packing types: PFA - FKM - EPDM.
- Approvals : 3A - ATEX - DESP - 3.1 - 2.1 - E1935 / 2004 - CE - REACH - ANIA

Specifications

| | |
|-------------------------------|---------------------------|
| Certificate | 3.1 EN10204 |
| Connection | Weld ends between flanges |
| Design norm | DIN |
| Exit | 90 Mbar |
| Housing | PFA/FKM |
| Internal Diameter | 81 |
| Material quality | 1.4404 |
| Outer Diameter | 85 |
| Surface Finish | $RA < 0,8/1,2 \mu m$ |
| Temperature range from | 0 |
| Temperature range to | 120 |
| Weight | 4.2 |

