

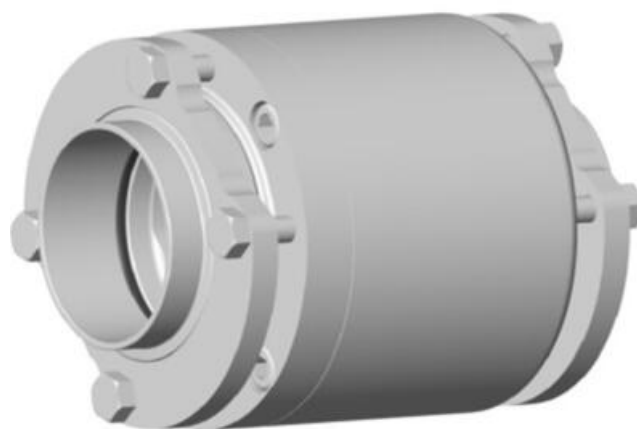


## DEFINOX - CHECK VALVE BETWEEN FLANGES

DE-UD065A31100

Check valve, DN65, SS 316L/PFA/EPDM

- Designed for a minimal pressure drop
- Vertical mounting for an improved seal
- Quick and easy installation
- Connection: Between Flanges with welding ends
- Sealing types: PFA - FKM - EPDM - PTFE



### Product description

Our products are of high quality and design that meet the strongest requirements of process technology and are the ideal solution for Food, Brewery, Cosmetics and Pharmaceutical processes!

#### Technical Advantages:

- 1/2" - DN 125
- Interior surface roughness  $R_a = 0.8 \mu m$
- Vertical mounting for an improved seal and eliminate retention
- Fast and easy disassembly
- Connection: Welding ends
- Multiple packing types: PFA - FKM - EPDM.
- Approvals: 3A - ATEX - DESP - 3.1 - 2.1 - E1935 / 2004 - CE - REACH - ANIA

### Specifications

<b>Certificate</b>	3.1 EN10204
<b>Connection</b>	Weld ends between flanges
<b>Design norm</b>	DIN
<b>Exit</b>	90 Mbar
<b>Housing</b>	PFA/EPDM
<b>Internal Diameter</b>	66
<b>Material quality</b>	1.4404
<b>Outer Diameter</b>	70
<b>Surface Finish</b>	$RA < 0,8/1,2 \mu m$
<b>Temperature range from</b>	0
<b>Temperature range to</b>	120
<b>Weight</b>	3

