



Q SERIES, CUBIC BEACON, 94MM, 132MM, 184MM OR 228MM

Q series

874261408

Led Steady/Flashing 24v Amber

- 94mm, 132mm, 184mm or 228mm Cubic beacon
- Steady, Flashing, Strobe and Multi-strobe light options
- Wide control voltage range



Product description

The Q series offers a long lifetime, low current consumption and is vibration proof. The LED steady/flashing beacons are available in all sizes and the LED multi strobe beacons in 184mm and 228mm. It is also available in conventional xenon strobe technique. This unique range includes LED technique with high signalling effect 3 strobe patterns (double/6 times/multi strobe) and externally switchable. For applications in the industry, process control, fire/gas alarm, marine, and is also fit for plc applications (leakage, inrush current) Luminaires of the LED series boast a particularly high luminous intensity of up to 400 candela thanks to special high-power LEDs. The unique calotte design gives the signal effect both frontally and laterally. The calottes of the Q series are available in six different colours and are made of highly impact-resistant polycarbonate, which is UV-stabilised and guarantees colour fastness even under extreme conditions. With a protection class of IP66 and an impact resistance of IK09, the Q series is suitable for industrial, processing and marine applications.

Specifications

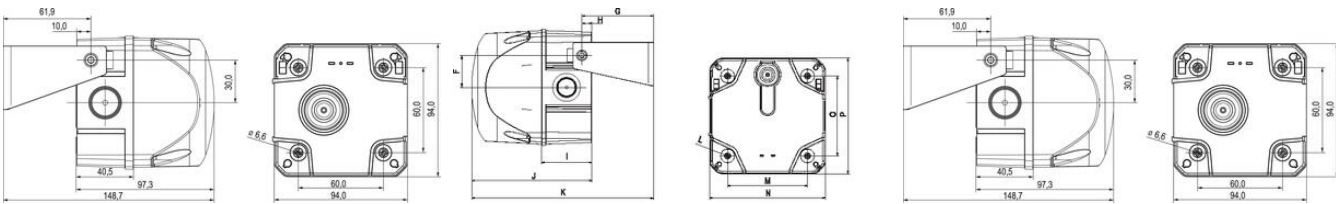
Color House	Red
Color Lens	Orange
Diameter	132
Flash Frequency	1
Height	138
IK Class	9
IP Class	IP66
Light source	LED
Light type	Flashing, Steady
Nominal current	500
Nominal Supply Voltage	24-48 V AC/DC

Operational Temperature

-30°C ... 60°C

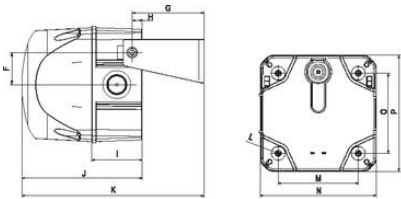
Terminal connection

2.5



	A	B	C	D	E	F	G	H	I	J	K	L	M	N	O	P
Size 2	143	95	10	32	50	36.8	81.5	11.5	57.4	136.8	206.8	6.5	91	131.8	91	131.8
Size 3	199	112	16	48	70	55	105.5	18.5	72.5	175.8	262.8	6.5	124	183.5	124	183.5
Size 4	243.3	140	10	70	100	83	133.3	16.8	80.8	223.4	340	187	228.4	167	228.4	6.5

Measuring unit: mm



	A	B	C	D	E	F	G	H	I	J	K	L	M	N	O	P
Size 2	143	95	10	32	50	36.8	81.5	11.5	57.4	136.8	206.8	6.5	91	131.8	91	131.8
Size 3	199	112	16	48	70	55	105.5	18.5	72.5	175.8	262.8	6.5	124	183.5	124	183.5
Size 4	243.3	140	10	70	100	83	133.3	16.8	80.8	223.4	340	187	228.4	167	228.4	6.5

Measuring unit: mm