



## CUBIC MULTI SIREN 8-63 TONER SERIES "A"

### AS series

874060405  
Beacon Alarm Multitone 24v AC/DC ASS-P

- IP66
- Up to 127 dB
- Up to 63 tones
- Can be combined with series "Q"



### Product description

The siren has three external alarms, as well as automatic synchronization when using multiple sirens. Series A sirens can be combined with other units of series A and Q.

### Specifications

<b>Color House</b>	Red
<b>Diameter</b>	94
<b>IK Class</b>	9
<b>IP Class</b>	IP66
<b>Mounting</b>	Independent
<b>Nominal current max</b>	0.1
<b>Nominal current min</b>	0.1
<b>Number of tones</b>	8
<b>Operating Voltage AC / DC Max</b>	26.4
<b>Sound control</b>	Yes
<b>Sound level max</b>	108
<b>Supply Voltage</b>	24
<b>Supply Voltage AC / DC Min</b>	21.6
<b>Temperature range from</b>	-30
<b>Temperature range to</b>	60

Terminal connection

2.5

Tone frequency max

4600

Tone frequency min

500

Weight

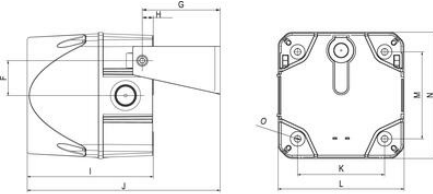
300



The sound pressure decreases by 6 dB when doubling the distance; the following distance table is to be seen as indication, as also factors like tone type, wind speed, wind direction, humidity, weather conditions etc. do influence the sound pressure level.

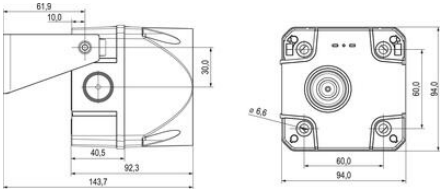
Distance (m)	65	70	75	80	85	90	92	94	96	98	100	102	104	106	108	110	112	114	116	118	120
1	59	64	69	74	79	84	86	88	90	92	94	96	98	100	102	104	106	108	110	112	114
2	55	60	65	70	75	80	82	84	86	88	90	92	94	96	98	100	102	104	106	108	110
3	51	56	61	66	71	76	78	80	82	84	86	88	90	92	94	96	98	100	102	104	106
5	45	50	55	60	65	70	72	74	76	78	80	82	84	86	88	90	92	94	96	98	100
10	39	44	49	54	59	64	66	68	70	72	74	76	78	80	82	84	86	88	90	92	94
20	35	40	45	50	55	60	62	64	66	68	70	72	74	76	78	80	82	84	86	88	90
30	36	41	46	51	56	60	62	64	66	68	70	72	74	76	78	80	82	84	86	88	90
50	40	45	50	55	60	62	64	66	68	70	72	74	76	78	80	82	84	86	88	90	92
100	39	44	49	54	59	64	66	68	70	72	74	76	78	80	82	84	86	88	90	92	94
200	38	43	48	53	58	63	65	67	69	71	73	75	77	79	81	83	85	87	89	91	93
500	36	41	46	51	56	60	62	64	66	68	70	72	74	76	78	80	82	84	86	88	90

The sound pressure decreases by 6 dB when doubling the distance



	A	B	C	D	E	F	G	H	I	J	K	L	M	N	O
Size 2	143	95	10	32	50	36.5	81.5	11.5	131.5	86.8	91	131.8	91	131.8	6.5
Size 3	199	113	16	48	70	55	105.5	18.5	168.9	118.4	124	183.5	124	183.5	6.5
Size 4	243.3	140	25	70	100	63	133.3	16.8	216.9	146.6	167	228.4	167	228.4	6.5

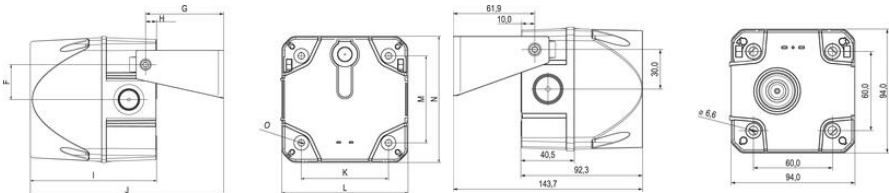
Measuring unit mm



The sound pressure decreases by 6 dB when doubling the distance; the following distance table is to be seen as indication, as also factors like tone type, wind speed, wind direction, humidity, weather conditions etc. do influence the sound pressure level.

Distance (m)	65	70	75	80	85	90	92	94	96	98	100	102	104	106	108	110	112	114	116	118	120
1	59	64	69	74	79	84	86	88	90	92	94	96	98	100	102	104	106	108	110	112	114
2	55	60	65	70	75	80	82	84	86	88	90	92	94	96	98	100	102	104	106	108	110
3	51	56	61	66	71	76	78	80	82	84	86	88	90	92	94	96	98	100	102	104	106
5	45	50	55	60	65	70	72	74	76	78	80	82	84	86	88	90	92	94	96	98	100
10	39	44	49	54	59	64	66	68	70	72	74	76	78	80	82	84	86	88	90	92	94
20	35	40	45	50	55	60	62	64	66	68	70	72	74	76	78	80	82	84	86	88	90
30	36	41	46	51	56	60	62	64	66	68	70	72	74	76	78	80	82	84	86	88	90
50	40	45	50	55	60	62	64	66	68	70	72	74	76	78	80	82	84	86	88	90	92
100	39	44	49	54	59	64	66	68	70	72	74	76	78	80	82	84	86	88	90	92	94
200	38	43	48	53	58	63	65	67	69	71	73	75	77	79	81	83	85	87	89	91	93
500	36	41	46	51	56	60	62	64	66	68	70	72	74	76	78	80	82	84	86	88	90

The sound pressure decreases by 6 dB when doubling the distance



	A	B	C	D	E	F	G	H	I	J	K	L	M	N	O
Size 2	143	95	10	32	50	36.5	81.5	11.5	131.5	86.8	91	131.8	91	131.8	6.5
Size 3	199	113	16	48	70	55	105.5	18.5	168.9	118.4	124	183.5	124	183.5	6.5
Size 4	243.3	140	25	70	100	63	133.3	16.8	216.9	146.6	167	228.4	167	228.4	6.5

Measuring unit mm