

ASCO - 3/2 ANGLE-SEAT VALVE 1/2"-2"

E390B005

Angle seat valve 3/4" NC 3/2

- Normally closed/open
- Working pressure 0 to 16 bar
- Housing in bronze
- Non-sensitive to dirt

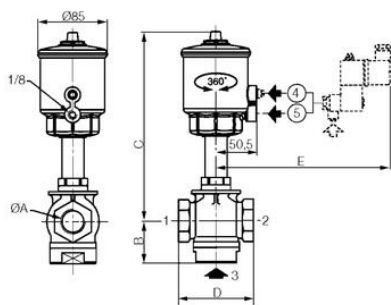
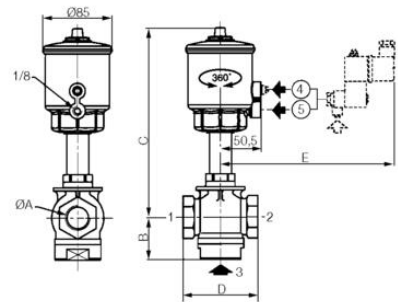
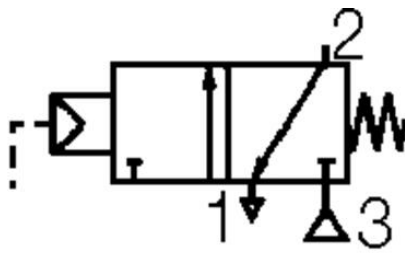
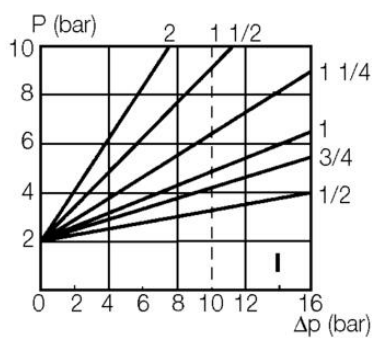


Product description

Specifications

Approvals	SIL2
Connection Air	1/8 BSP
Connection Thread	3/4 BSP
Differential Pressure Air Max	16
Differential Pressure Min	0
Differential Pressure Oil Max	16
Differential Pressure Water Max	16
Differential steam pressure max	10
Function 1	3/2
Function 2	Normally Closed (SPST)
Material Body	Bronze
Material of seals	PTFE
Material Operator	Fiberglass reinforced polyamide
Material Rod	Stainless steel
Materials Avskrapningstätning	FPM
Materials Gland	PTFE flask filled

Materials Piston Rod Seal	Stainless steel
Materials Piston Seal	PTFE
Packing Materials	Brass
Pilot Pressure Max	10
Pilot Pressure Min	5
Temperature range from	-10
Temperature range of media from	-10
Temperature range of media to	184
Temperature range to	60
Throughput	20
Type of valve	Seat valve
Weight	1.9
Viscosity Max	600



ØA	B	C	D	E
1/2	39	198	68	153
3/4	44	203	84	153
1	52	212	92	153
1 1/4	57	237	110	153
1 1/2	61	244	125	153
2	69	253	145	153