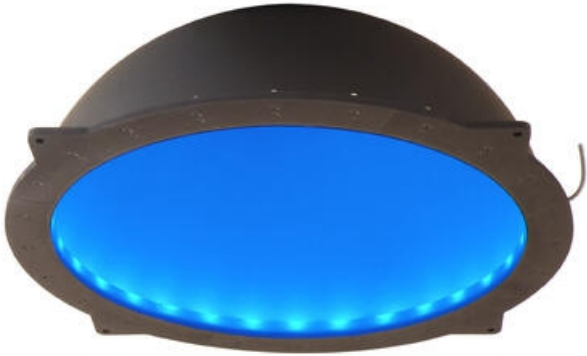




**ADVANCED ILLUMINATION - DL080 -
LARGE AREA DIFFUSE LIGHT**

DL080-625IC
Ai Large Area Diffuse Light, Red, IC2

- 698.5mm (27.5") outside diameter
- Diffuse illumination for inspecting specular objects
- Designed for large object inspections



Product description

Specifications

Wave-Length	625
-------------	-----

