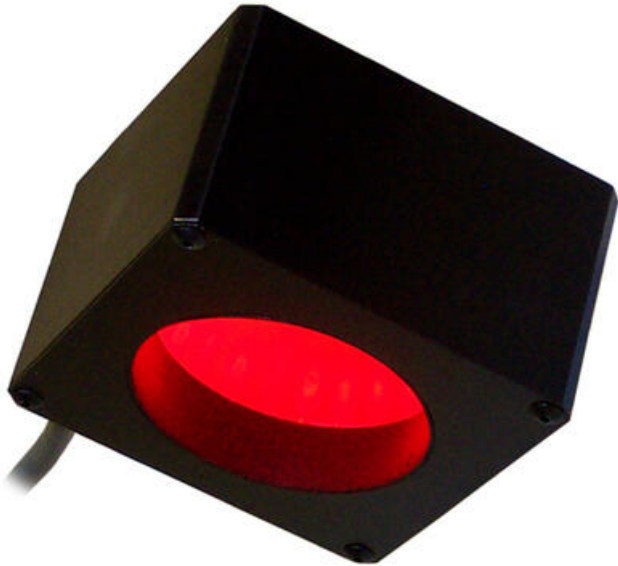


ADVANCED ILLUMINATION - DL2230 - GENERAL PURPOSE DIFFUSE LIGHT

DL2230-625C5
Ai Diffuse Light, Red, Pulsar

- A modified, extremely efficient integrating light source
- Compact, space saving design - ideally suited for inspecting small, specular objects
- Wide range of wavelengths



Product description

Specifications

Wave-Length	625
-------------	-----

