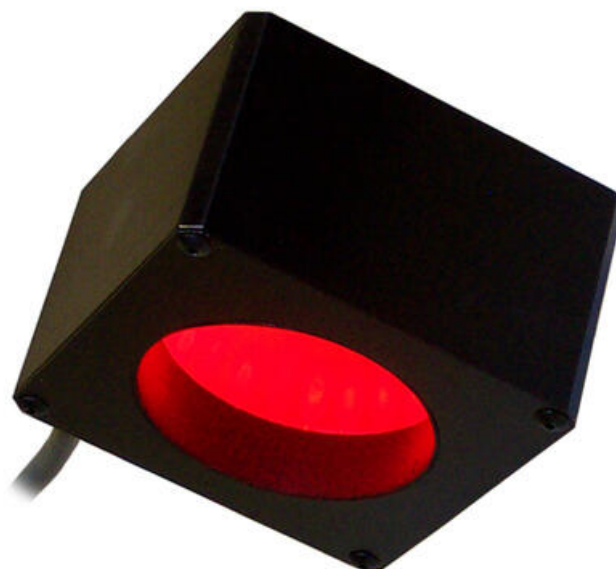


DL2230-625I3
Ai Diffuse Light, Red, I3



- A modified, extremely efficient integrating light source
- Compact, space saving design - ideally suited for inspecting small, specular objects
- Wide range of wavelengths

Product description

Specifications

Technical drawings of the M4 4PLCS cable head for 1.5 Meter and 3.0 Meter lengths. Each set includes a side view, a front view, and a rear view. Dimensions are provided in millimeters and inches. The side view shows a cable diameter of 19.0 mm (0.75 inches) and a head diameter of 49.5 mm (1.95 inches). The front view shows a head diameter of 71.9 mm (2.83 inches) and a cable diameter of 19.0 mm (0.75 inches). The rear view shows a head diameter of 49.5 mm (1.95 inches) and a cable diameter of 19.0 mm (0.75 inches). The cable length is 1.5 Meter (59 inches).