



## KUBLER SLIP RING SR060E

SR060E-25-2-2-132

SLIP RING 25MM H/SHAFT 2 x DATA 2 x LOAD

- Standard slipring
- Life span 50 million revolutions
- Easily accessible contacts
- IP64



### Product description

SR060E is a compact slip ring for up to 3 power and 2 data transmissions from a stationary to a rotating platform. The power and data transmission takes place securely via trailer contacts.

New innovative contact materials have a long service life and extremely little maintenance during operation. The round shape with smooth surfaces and a high level of protection allow easy cleaning.

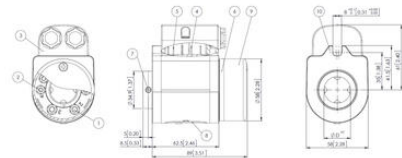
Examples of applications: packaging machines, textile machines, robots and handling equipment, rotating tables, etc.

### Specifications

<b>Contact Resistance Channel</b>	1
<b>Contact Resistance Data Channel</b>	0.1
<b>Dielectric Strength</b>	1000
<b>Hollow Shaft Diameter Max</b>	25
<b>Insulation Resistance</b>	10 <sup>3</sup> Ohm(500VDC)
<b>IP Class</b>	IP64
<b>Life span</b>	500000000
<b>Power Load Max</b>	16
<b>Signal load</b>	2
<b>Speed max</b>	500
<b>Temperature range from</b>	0
<b>Temperature range to</b>	75
<b>Voltage Input max</b>	240

**Dimensions**

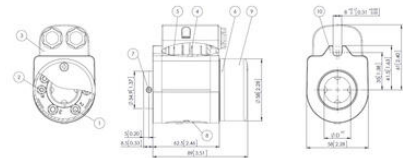
(Dimensions in mm (inch))



- 1 - Screw terminal M5 for power transmission
- 2 - Screw terminal M5 for signal transmission
- 3 - Protective cover for the motor connections with screened assembly (only IP66)
- 4 - Flat pin connection for power transmission
- 5 - Flat pin connection for signal transmission
- 6 - Rotating connection ring
- 7 - 4 x socket set screw DIN 914 M5
- 8 - Maintenance window
- 9 - Protective cover for connections
- 10 - Surge stop

**Dimensions**

(Dimensions in mm (inch))



- 1 - Screw terminal M5 for power transmission
- 2 - Screw terminal M5 for signal transmission
- 3 - Protective cover for the motor connections with screened assembly (only IP66)
- 4 - Flat pin connection for power transmission
- 5 - Flat pin connection for signal transmission
- 6 - Rotating connection ring
- 7 - 4 x socket set screw DIN 914 M5
- 8 - Maintenance window
- 9 - Protective cover for connections
- 10 - Surge stop