

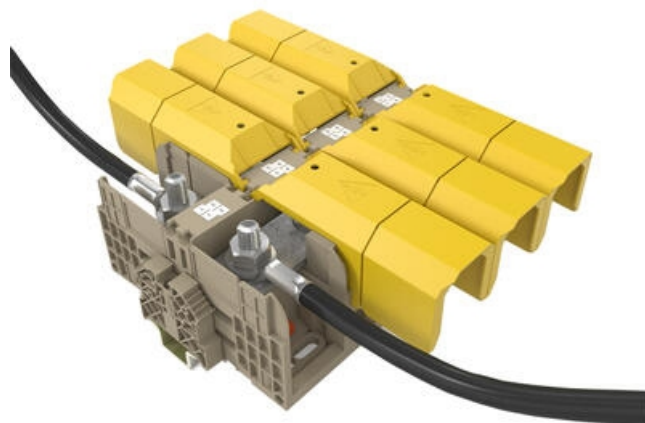
HIGH-POWER STUD TERMINALS - HSKG 35-300MM²

HSKG

17024.2

Terminal Block HSKG 185sq Double Stud 12mm

- Dual stud connection
- Direct & TS35 mount
- IP20 with Gull Wing Covers fitted
- Material polyamide 6.6
- Fire-resistance class V0



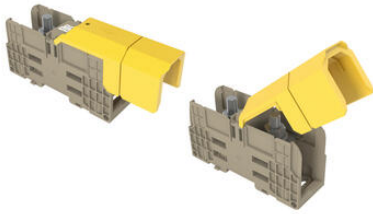
Product description

The wire connection range is from 2.5 mm² to 300 mm². and crimped lugs are used to fit the cables to the busbar using the hexagonal nut with built in washer. When used together with the ADH hinged covers, the HSKG stud terminals provide outstanding finger and touch protection. The ADH cover is easy to mount; it simply snaps into the side walls of the stud terminals as it is closed. In this quick and reliable way, touch-safe protection of the terminal points is always guaranteed.

Specifications

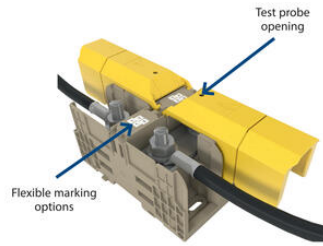
Approvals	UL, GL, cUL, KEMA KUR, EAC
Bureau Veritas test standard	IEC 60947-7-1
Color	Beige
Connections	2
Contact clamping area	≤ 185 mm ²
Contamination degree	3
Country of origin	DE
Cross-Section	185
cUL test standard	C22.2 No 158
DIN 46234 / 1 cable lug per side, max.	240
DIN 46234 / 1 cable lug per side, min.	10
DIN 46234 / 2 cable lugs per side, max.	185
DIN 46234 / 2 cable lugs per side, min.	10

DIN 46235: 1 cable lug per side, max.	240
DIN 46235: 1 cable lug per side, min.	25
DIN 46235: 2 cable lugs per side, max.	185
DIN 46235: 2 cable lugs per side, min.	25
EAC test standard	TR ZU 004/2011
Flamklass	UL94-V0
GL test standard	IEC 60947-7-1:2009
Height TS 35/7.5	78
Height with TW/ADH	90
Insulation Material	Polyamide 6.6
KEMA KEUR test standard	EN 60947-7-1:2009
Length	164
Length with TW/ADH	288
Mounting	TS 35
Number of levels	1
Operating temperature from	-40
Operating temperature to	120
Overvoltage category	III
Pack Size	5
Rated current cUL	380
Rated Current IEC	353
Rated impulse voltage	8
Rated wire cross section from (AWG)	8
Rated wire cross section to (AWG)	500 Kcmil
Rated voltage cUL	1000
Rated Voltage IEC	1000
Rated Voltage To UL	1000
Stud size	M 12
Tariff code	85369010
Torque max	31
Torque Min	14
UL test standard	UL 1059
Weight	409
Width	55

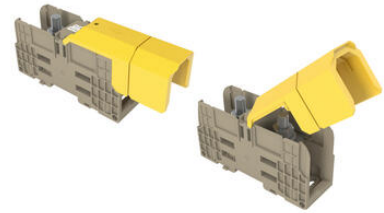
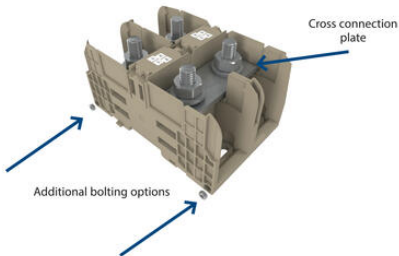


Using the ADH covers

Individual ADH... covers are available for each width of stud terminal. They are designed for the different sizes and the corresponding clearance and creepage distances. It is also possible to shorten the covers along pre-creased breakage points. The ADH cover is attached by pressing the cover down onto the base terminal so that the cover snaps onto the terminal.

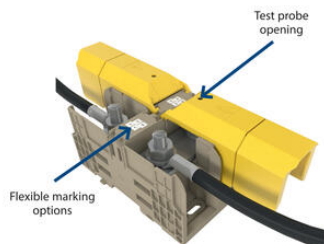


TS mount / direct mount



Using the ADH covers

Individual ADH... covers are available for each width of stud terminal. They are designed for the different sizes and the corresponding clearance and creepage distances. It is also possible to shorten the covers along pre-creased breakage points. The ADH cover is attached by pressing the cover down onto the base terminal so that the cover snaps onto the terminal.



TS mount / direct mount

