

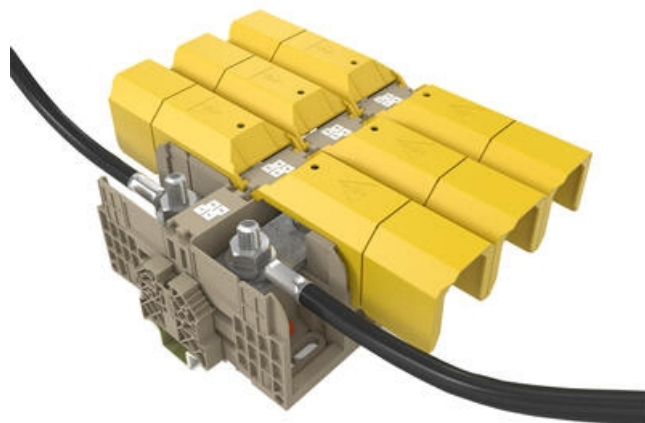
HIGH-POWER STUD TERMINALS - HSKG 35-300MM²

HSKG

17023.2

Terminal Block HSKG 120sq Double Stud 10mm

- Dual stud connection
- Direct & TS35 mount
- IP20 with Gull Wing Covers fitted
- Material polyamide 6.6
- Fire-resistance class V0



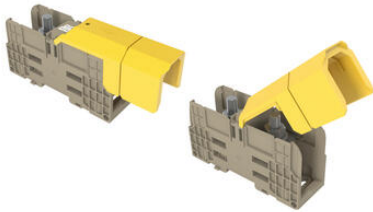
Product description

The wire connection range is from 2.5 mm² to 300 mm². and crimped lugs are used to fit the cables to the busbar using the hexagonal nut with built in washer. When used together with the ADH hinged covers, the HSKG stud terminals provide outstanding finger and touch protection. The ADH cover is easy to mount; it simply snaps into the side walls of the stud terminals as it is closed. In this quick and reliable way, touch-safe protection of the terminal points is always guaranteed.

Specifications

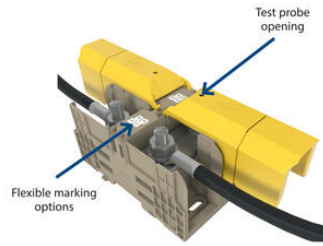
Approvals	UL, GL, cUL, KEMA KUR, EAC
Bureau Veritas test standard	IEC 60947-7-1
Color	Beige
Connections	2
Contact clamping area	≤ 120 mm ²
Contamination degree	3
Country of origin	DE
Cross-Section	120
cUL test standard	C22.2 No 158
DIN 46234 / 1 cable lug per side, max.	15
DIN 46234 / 1 cable lug per side, min.	6
DIN 46234 / 2 cable lugs per side, max.	120
DIN 46234 / 2 cable lugs per side, min.	6

DIN 46235: 1 cable lug per side, max.	150
DIN 46235: 1 cable lug per side, min.	16
DIN 46235: 2 cable lugs per side, max.	120
DIN 46235: 2 cable lugs per side, min.	16
EAC test standard	TR ZU 004/2011
Flamklass	UL94-V0
GL test standard	IEC 60947-7-1:2009
Height TS 35/7.5	72
Height with TW/ADH	80
Insulation Material	Polyamide 6.6
KEMA KEUR test standard	EN 60947-7-1:2009
Length	133
Length with TW/ADH	226
Mounting	TS 35
Number of levels	1
Operating temperature from	-40
Operating temperature to	120
Overvoltage category	III
Pack Size	5
Rated current cUL	310
Rated Current IEC	269
Rated impulse voltage	8
Rated wire cross section from (AWG)	10
Rated wire cross section to (AWG)	250 Kcmil
Rated voltage cUL	1000
Rated Voltage IEC	1000
Rated Voltage To UL	1000
Stud size	M 10
Tariff code	85369010
Torque max	20
Torque Min	10
UL test standard	UL 1059
Weight	245.7
Width	42

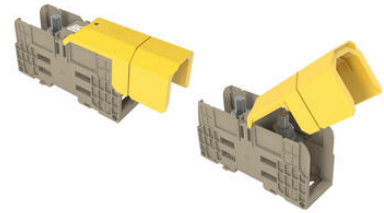
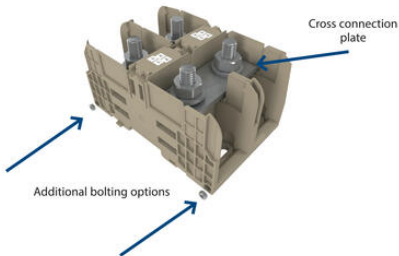


Using the ADH covers

Individual ADH... covers are available for each width of stud terminal. They are designed for the different sizes and the corresponding clearance and creepage distances. It is also possible to shorten the covers along pre-creased breakage points. The ADH cover is attached by pressing the cover down onto the base terminal so that the cover snaps onto the terminal.

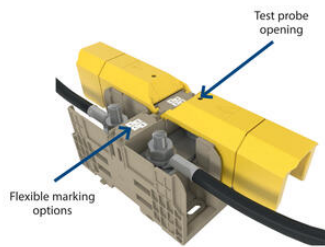


TS mount / direct mount



Using the ADH covers

Individual ADH... covers are available for each width of stud terminal. They are designed for the different sizes and the corresponding clearance and creepage distances. It is also possible to shorten the covers along pre-creased breakage points. The ADH cover is attached by pressing the cover down onto the base terminal so that the cover snaps onto the terminal.



TS mount / direct mount

