

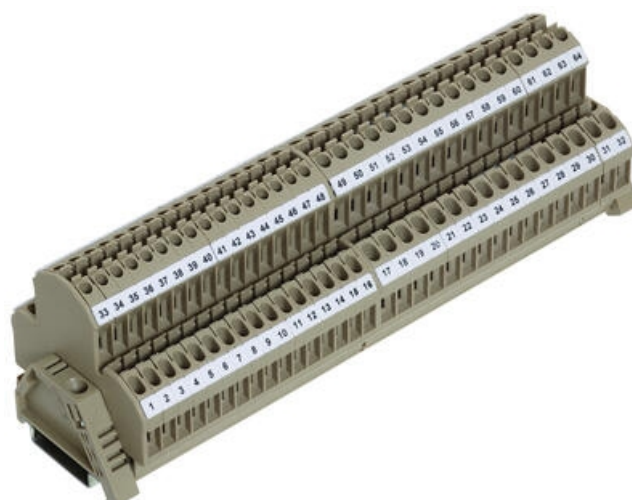
DOUBLE DECK TERMINALS - RKD 2.5-4MM²

RKD, RKDG

2584.2

Terminal Block RKDG4sq D/Dk Beige (Top Entry)

- Screw cross connectors
- Temperature resistance -40 °C...+105 °C
- Polyamide 6.6 UL94-V2
- Same level screw option
- Versions with electronic components fitted



Product description

Specifications

Approvals	KEMA KUR
Color	Beige
Connections	2 x 2
Contamination degree	3
Country of origin	DE
Cross connect channels	1
Cross section single wire from	0.2
Cross section single wire to	4
Cross section stranded wire from	0.2
Cross section stranded wire to	4
Cross section stranded with ferrule from	0.2
Cross section stranded with ferrule to	4
Cross-Section	4
Flamklass	UL94-V2
Height TS 35/7.5	60
Insulation Material	Polyamide 6.6
KEMA KEUR test standard	EN 60947-7-1:2009

Length	58.5
Mounting	TS 35
Number of levels	2
Operating temperature from	-40
Operating temperature to	105
Overvoltage category	III
Pack Size	100
Plug gauge acc. EN 60 947-1	A4
Rated Current IEC	32
Rated impulse voltage	6
Rated wire cross section from (AWG)	22
Rated wire cross section to (AWG)	12
Rated Voltage IEC	500
Screw size	M 3
Screw type	Slotted
Stripping Length	9
Tariff code	85369010
Torque max	1
Torque Min	0.5
Type of terminal	Screw Terminals, DIN Rail terminals
Weight	16.06
Width	6