



KUEBLER - ABSOLUTE-CODED ANGULAR TRANSMITTER SENDIX F5868 / F5888, OPTICAL, CANOPEN, Ø58 MM SERIE F5888 CANOPEN

- Housing diameter Ø58 mm
- CANopen - Interface
- 16 + 16 bit resolution
- -40 to +85 ° C working temperature



Product description

Sendix F5868 / F5888 is a series of multivalved optical axes and hole axes with CANopen interface and resolution of up to 32 bits (16 bit multi-color + 16-bit one-turn).

The sensor also has high enclosure, shock resistance and a wide temperature range. The F5868 / F5888 is therefore very suitable for applications where extreme environments or temperatures may occur, such as mobile applications.

Please refer to the image below for ordering information.

| Order code | | 8.F5868.XX2X.212X | | | | | | |
|-----------------------------------|---------------------------------------------|---------------------------------------------------------------------------------------------------------------------------------------------------------------------------------------------------------------|-------------------------------------------------|-------------------------------------------------------------------------------------------------------------------------------------------------------------------|---------------------------|-----------------------------------------------|------------------------------------------------------------------------------------------|-----------------------------------------------|
| Shaft version | | Type | a | b | c | d | e | f |
| a Flange | 1 = clamping flange, IP65 | ø 58 mm [2.28"] | c Interface / power supply | d Type of connection | e Fieldbus profile | f Options (service) | 21 = CANopen | 2 = no option 3 = SET button |
| | 3 = clamping flange, IP67 | ø 58 mm [2.28"] | | | | | | |
| | 2 = synchro flange, IP65 | ø 58 mm [2.28"] | | | | | | |
| | 4 = synchro flange, IP67 | ø 58 mm [2.28"] | | | | | | |
| b Shaft (ø x L), with flat | 1 = 6 x 10 mm [0.24 x 0.39"] ¹⁾ | | 2 = CANopen DS301 V4.02 / 10 ... 30 V DC | A = radial cable, 2 m [6.56'] PVC B = radial cable, special length PVC *) E = 1 x radial M12 connector, 5-pin F = 2 x radial M12 connector, 5-pin | 21 = CANopen | 2 = no option 3 = SET button | Optional on request - Ex 2/22 ³⁾ - surface protection salt spray tested | |
| | 2 = 10 x 20 mm [0.39 x 0.79"] ²⁾ | | | | | | | |
| | 3 = 1/4" x 7/8" | | | | | | | |
| | 4 = 3/8" x 7/8" | | | | | | | |
| | | *) Available special lengths (connection type B): 3, 5, 8, 10, 15 m [9.84, 16.40, 26.25, 32.80, 49.21'] order code expansion .XXXX = length in dm ex.: 8.F5868.122B.2123.0030 (for cable length 3 m) | | | | | | |

Order code
Hollow shaft

8.F5888
Type

X

a

X

b

2

c

X

d

.

e

21

f

2

f

X

f

a Flange
1 = with spring element, long, IP65
2 = with spring element, long, IP67
3 = with stator coupling, IP65 \varnothing 65 mm [2.56"]
4 = with stator coupling, IP67 \varnothing 65 mm [2.56"]
5 = with stator coupling, IP65 \varnothing 63 mm [2.48"]
6 = with stator coupling, IP67 \varnothing 63 mm [2.48"]

b Through hollow shaft
3 = \varnothing 10 mm [0.39"]
4 = \varnothing 12 mm [0.47"]
5 = \varnothing 14 mm [0.55"]
6 = \varnothing 15 mm [0.59"]
Blind hollow shaft
(insertion depth max. 30 mm [1.18"])
B = \varnothing 12 mm ¹⁾

c Interface / power supply
2 = CANopen DS301 V4.02 / 10 ... 30 V DC

d Type of connection
L = tangential cable, 2 m [6.56"] PVC
M = tangential cable, special length PVC *)
E = 1 x radial M12 connector, 5-pin
F = 2 x radial M12 connector, 5-pin ²⁾

e Fieldbus profile
21 = CANopen

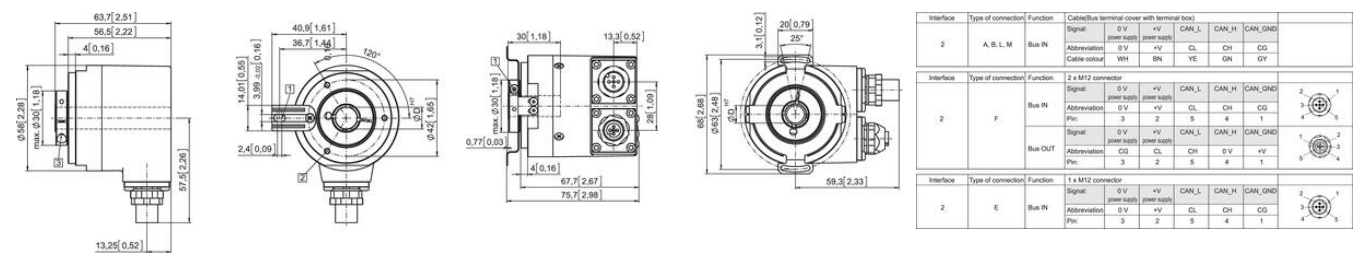
f Options (service)
2 = no option
3 = SET button




Optional on request
- Ex 2/22 ³⁾ (not for type of connection L, M)
- surface protection salt spray tested

*) Available special lengths (connection type M):
3, 5, 8, 10, 15 m [9.84, 16.40, 26.25, 32.80, 49.21']
order code expansion .XXXX = length in dm
ex.: 8.F5888.542M.2123.0030 (for cable length 3 m)

Specifications

| | |
|------------------------|------------------------------|
| Connection Thread | Cable, M12 |
| Housing diameter | 58 |
| IP Class | IP65, IP67 |
| Mounting | Hollow shaft |
| Output | CANopen |
| Resolution Envarv | Max: 16 bit, default: 13 bit |
| Resolution More Yards | 16 bit |
| Sensor type | Absolute |
| Shaft Diameter max | 15 |
| Shaft Diameter min | 10 |
| Supply Voltage DC Max | 30 |
| Supply Voltage DC Min | 10 |
| Temperature range from | -40 |
| Temperature range to | 85 |
| Version | Multiturn |



| Interface | Type of connection | Function | Cables (Bus terminal cover with terminal box) | | | | | | | | |
|---------------|--------------------|-----------|-----------------------------------------------|--------------|-------------------|-------|-------|---------|-----------------------------------------------------------------------------------|---------|-----------------------------------------------------------------------------------|
| 2 | A, B, L, M | Bus IN | Signal: | 0 V | +V | CAN_L | CAN_H | CAN_GND | | | |
| | | | Abbreviation: | power supply | power supply | | | | | | |
| | | | Abbreviation: | 0 V | +V | CL | CH | CG | | | |
| | | | Cable colour: | WH | BN | YE | GN | GY | | | |
| Interface | Type of connection | Function | 2 x M12 connector | | | | | | | | |
| 2 | F | Bus IN | Signal: | 0 V | +V | CAN_L | CAN_H | CAN_GND |  | | |
| | | | Abbreviation: | power supply | power supply | | | | | | |
| | | | Pin: | 3 | 2 | 5 | 4 | 1 | | | |
| | | Bus OUT | Signal: | 0 V | +V | CAN_L | CAN_H | CAN_GND |  | | |
| | | | Abbreviation: | power supply | power supply | | | | | | |
| | | | Pin: | 3 | 2 | 5 | 4 | 1 | | | |
| | | | | | | | | | | | |
| | | | | | | | | | | | |
| | | Interface | Type of connection | Function | 1 x M12 connector | | | | | | |
| | | 2 | E | Bus IN | Signal: | 0 V | +V | CAN_L | CAN_H | CAN_GND |  |
| Abbreviation: | power supply | | | | power supply | | | | | | |
| Pin: | 3 | | | | 2 | 5 | 4 | 1 | | | |