

KUEBLER - ABSOLUTE-CODED ANGULAR TRANSMITTER SENDIX M3658 / M3678, MAGNET-CODED, CANOPEN, Ø36 MM

SERIE M3658

- Housing diameter Ø36 mm
- CANopen
- Safety-Lockplus™
- IP67/IP69K



PRODUCT DESCRIPTION

Sendix M3658 / M3678 is a series of single-core magnet-encoded axial outputs with CANopen interface and a resolution of up to 14 bits. Thanks to the contactless technology, the sensor is very compact and robust. As this technique allows for complete encapsulation of the sensor part on the sensor, a high enclosure class, shock resistance and a wide temperature range can be achieved. The sensor is therefore very suitable for applications where extreme environments or temperatures can occur, such as mobile applications. It comes with either M12 or PUR cable as standard. Sendix M3658 / M3678 is also available in a salt water resistant version.

Please refer to the images below for ordering information.

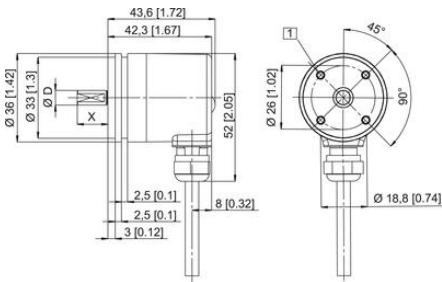
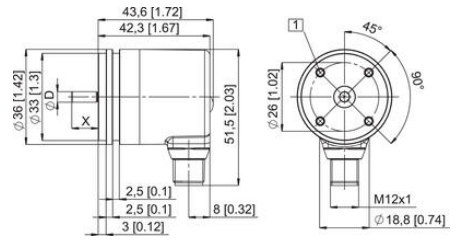
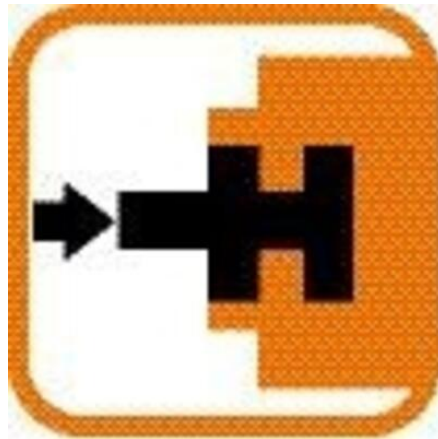
Order code shaft version	8.M3658 Type	. 2 X C X . 21 1 X a b c d e f
a Flange 2 = synchro flange, ø 36 mm [1.42"]	d Type of connection 2 = radial cable, 1 m [3.28] PUR B = radial cable, special length PUR *) 4 = radial M12 connector, 5-pin *) Available special lengths (connection types B): 2, 3, 5, 8, 10, 15 m [6.56, 9.84, 16.40, 26.25, 32.80, 49.21'] order code expansion .XXXX = length in dm ex.: 8.M3658.23CB.2111.0030 (for cable length 3 m)	e Fieldbus profile 21 = CANopen f Protection 1 = IP67 2 = IP69k <i>Optional on request</i> - Ex 2/22 (only for type of connection 4) - surface protection salt spray tested
b Shaft (ø x L), with flat 3 = ø 6 x 12.5 mm [0.24 x 0.49"] 6 = ø 8 x 12.5 mm [0.32 x 0.49"] 5 = ø 1/4" x 12.5 mm [0.49"]		
c Interface / power supply C = CANopen DS301 V4.02 / 8 ... 30 V DC		

Order code hollow shaft	8.M3678 Type	. X X C X . 21 1 X a b c d e f
a Flange 2 = with spring element, long 5 = with stator coupling, ø 46 mm [1.81"]	d Type of connection 2 = radial cable, 1 m [3.28] PUR B = radial cable, special length PUR *) 4 = radial M12 connector, 5-pin *) Available special lengths (connection type B): 2, 3, 5, 8, 10, 15 m [6.56, 9.84, 16.40, 26.25, 32.80, 49.21'] order code expansion .XXXX = length in dm ex.: 8.M3678.52CB.2111.0030 (for cable length 3 m)	e Fieldbus profile 21 = CANopen f Protection 1 = IP67 2 = IP69k <i>Optional on request</i> - Ex 2/22 (only for type of connection 4) - surface protection salt spray tested
b Blind hollow shaft (insertion depth max. 18 mm [0.71"]) 2 = ø 6 mm [0.24"] 4 = ø 8 mm [0.32"] 6 = ø 10 mm [0.39"] 3 = ø 1/4"		
c Interface / power supply C = CANopen DS301 V4.02 / 8 ... 30 V DC		

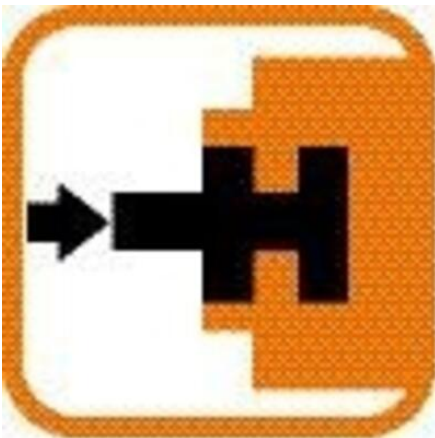
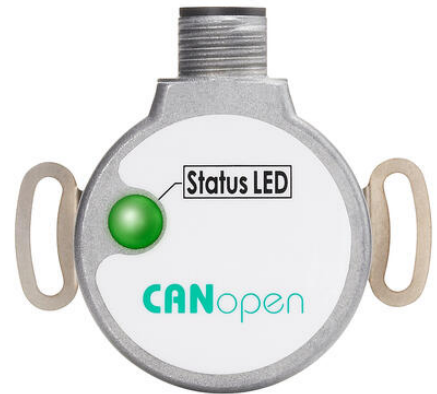
SPECIFICATIONS

Housing diameter	36
IP Class	IP67, IP69K

Shaft Diameter max	8
Shaft Diameter min	6
Supply Voltage DC Max	30
Supply Voltage DC Min	8
Temperature range from	-40
Temperature range to	85



Interface	Type of connection	Cable (isolate unsized wires individually before initial start up)	Top view of mating side, male contact base					
C	2, 8	Signal: Cable colour:	+V BN	0V WH	CAN (GND) GY	CAN_H GR	CAN_L YE	 M12 connector, 5-pin
C	4	M12 connector, 5-pin Signal: Pins:	+V 2	0V 3	CAN (GND) 1	CAN_H 4	CAN_L 5	



Interface	Type of connection	Cable (isolate unsized wires individually before initial start up)	Top view of mating side, male contact base					
C	2, 8	Signal: Cable colour:	+V BN	0V WH	CAN (GND) GY	CAN_H GR	CAN_L YE	 M12 connector, 5-pin
C	4	M12 connector, 5-pin Signal: Pins:	+V 2	0V 3	CAN (GND) 1	CAN_H 4	CAN_L 5	