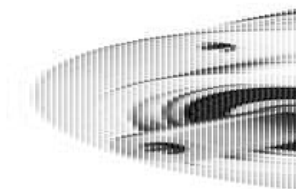


KUEBLER - ABSOLUTE-CODED ANGULAR TRANSMITTER SENDIX 5858/5878, OPTICAL, ETHERCAT, Ø58 MM

SERIE 5858 ETHERCAT



- Housing diameter Ø58 mm
- EtherCAT
- Safety-Lock™
- High enclosure class

PRODUCT DESCRIPTION

Sendix 5858/5878 is a one-way fieldbus transducer with EtherCAT in robust design. Thanks to the construction of Safety-Lock™ as well as the fully cast housing, the sensor is able to handle even the more demanding applications where there are high demands on the sensor. The wide temperature range combined with the high enclosure class allows the sensor to be used outdoors as well as applications where large temperature changes occur. Sendix 5858/5878 is available with LED indication, which facilitates diagnosis of the sensor and a set button that facilitates calibration.

Please refer to the image below for ordering information.

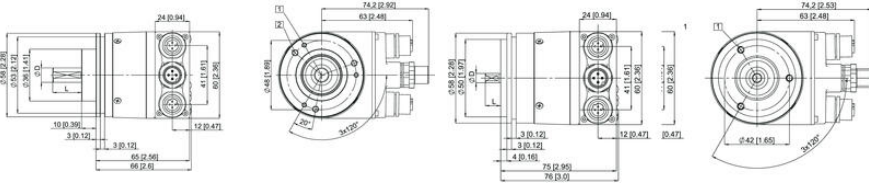
| Order code | 8.5858 | .XXB2. | B2 | 12 |
|---|---|-------------------------------------|--|----|
| Shaft version | Type | a b c d e | e | |
| a Flange | b Shaft (ø x L), with flat | c Interface / power supply | d Fieldbus profile | |
| 1 = clamping flange, IP65 ø 58 mm [2.28"] | 1 = 6 x 10 mm [0.24 x 0.39"] ¹⁾ | B = EtherCAT / 10 ... 30 V DC | B2= EtherCAT with CoE (CAN over EtherNet) | |
| 3 = clamping flange, IP67 ø 58 mm [2.28"] | 2 = 10 x 20 mm [0.39 x 0.79"] ²⁾ | d Type of connection | Optional on request | |
| 2 = synchro flange, IP65 ø 58 mm [2.28"] | 3 = 1/4" x 7/8" | removable bus terminal cover | - Ex 2/22 | |
| 4 = synchro flange, IP67 ø 58 mm [2.28"] | 4 = 3/8" x 7/8" | 2 = 3 x M12 connector, 4-pin | - surface protection salt spray tested | |
| 5 = square flange, IP65 □ 63.5 mm [2.5"] | | | | |
| 7 = square flange, IP67 □ 63.5 mm [2.5"] | | | | |

| Order code | 8.5878 | .XXB2. | B2 | 12 |
|--|--------------------------------------|-------------------------------------|--|----|
| Hollow shaft | Type | a b c d e | e | |
| a Flange | b Blind hollow shaft | c Interface / power supply | d Fieldbus profile | |
| 1 = with spring element, long, IP65 | (insertion depth max. 30 mm [1.18"]) | B = EtherCAT / 10 ... 30 V DC | B2= EtherCAT with CoE (CAN over EtherNet) | |
| 2 = with spring element, long, IP67 | 3 = ø 10 mm [0.39"] | d Type of connection | Optional on request | |
| 3 = with stator coupling, IP65 ø 65 mm [2.56"] | 4 = ø 12 mm [0.47"] | removable bus terminal cover | - Ex 2/22 | |
| 4 = with stator coupling, IP67 ø 65 mm [2.56"] | 5 = ø 14 mm [0.55"] | 2 = 3 x M12 connector, 4-pin | - surface protection salt spray tested | |
| 5 = with stator coupling, IP65 ø 63 mm [2.48"] | 6 = ø 15 mm [0.59"] | | | |
| 6 = with stator coupling, IP67 ø 63 mm [2.48"] | 8 = ø 3/8" | | | |
| | 9 = ø 1/2" | | | |

SPECIFICATIONS

| | |
|--------------------|------------|
| Housing diameter | 58 |
| IP Class | IP65, IP67 |
| Shaft Diameter max | 10 |
| Shaft Diameter min | 6 |

| | |
|------------------------|-----|
| Supply Voltage DC Max | 30 |
| Supply Voltage DC Min | 10 |
| Temperature range from | -40 |
| Temperature range to | 80 |



Type of connection 3, D-coded

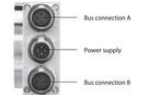
| Direction | Port A | | | | Port B | | | |
|--------------------|---------------|--------------|---------------|--------------|---------------|--------------|---------------|--------------|
| | Transmit data | Receive data | Transmit data | Receive data | Transmit data | Receive data | Transmit data | Receive data |
| Signal | TxD+ | RxD+ | TxD- | RxD- | TxD+ | RxD+ | TxD- | RxD- |
| Abbreviation | | | | | | | | |
| M12 PIN assignment | 1 | 2 | 3 | 4 | 1 | 2 | 3 | 4 |

Port A and B



Terminal assignment power supply

| Signal | +Vs power supply | n.c. | 0V | n.c. |
|--------------------|------------------|------|----|------|
| Abbreviation | +Vs | - | 0V | - |
| M12 PIN assignment | 1 | 2 | 3 | 4 |



Type of connection 2, D-coded

| Direction | Port A | | | | Port B | | | |
|--------------------|---------------|--------------|---------------|--------------|---------------|--------------|---------------|--------------|
| | Transmit data | Receive data | Transmit data | Receive data | Transmit data | Receive data | Transmit data | Receive data |
| Signal | TxD+ | RxD+ | TxD- | RxD- | TxD+ | RxD+ | TxD- | RxD- |
| Abbreviation | | | | | | | | |
| M12 PIN assignment | 1 | 2 | 3 | 4 | 1 | 2 | 3 | 4 |

Port A and B



Terminal assignment power supply

| Signal | +Vs power supply | n.c. | 0V | n.c. |
|--------------------|------------------|------|----|------|
| Abbreviation | +Vs | - | 0V | - |
| M12 PIN assignment | 1 | 2 | 3 | 4 |

