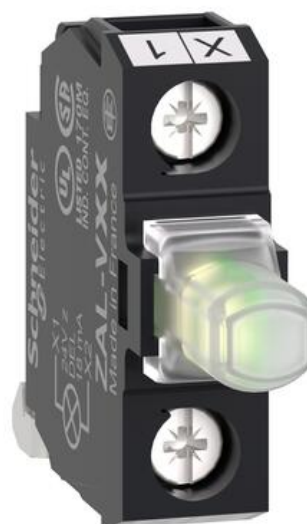


HARMONY CONTACT BLOCKS, LED BLOCKS FOR CONTROL STATIONS

ZENL1111

Pushbutton Contact Block N/O XAL Units

- Durable construction for industrial and commercial use
- Contact blocks available in NO and NC types
- Energy-efficient LED blocks with long service life
- Wide voltage options to match application needs



PRODUCT DESCRIPTION

The **Harmony Contact Blocks and LED Blocks** are essential components for Schneider Electric's Harmony range of pushbuttons, selector switches, and control stations. Designed for easy installation and long-lasting performance, these blocks provide reliable electrical connections and high-visibility signaling.

Contact blocks are available in both **NO (Normally Open)** and **NC (Normally Closed)** versions, while LED blocks offer bright, energy-efficient illumination for operator indication. Built with durability in mind, they ensure secure connections and compatibility with Harmony XB4, XB5, and XAPD ranges.