



SUCO - 0184/0185 PRESSURE SWITCH

IP65

0184457031003

0,3..1,5 bar, G1/4, CO, NBR, DIN

- Up to 250 V
- Connector included (DIN 43650/Form A)
- Five adjustment ranges from 0,3..1,5 bar to 50..200 bar
- Changeover (SPDT)
- Over pressure safety from 100 bar up to 600 bar



PRODUCT DESCRIPTION

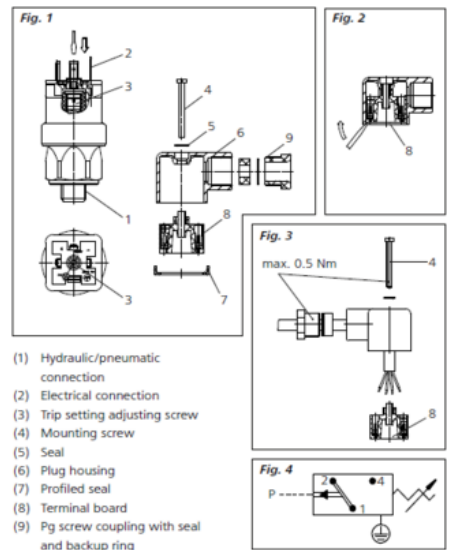
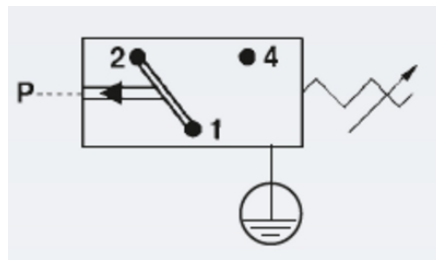
The 0184/0185 series is part of the changeover contact range from SUCO with an integrated plastic body and connector. Offering a maximum voltage of 250 V with a normally open and normally closed contact housed in a hex 27 zinc plated body offering a high pressure resistance. The switch point is very stable even after a long period of time and high load and is also adjustable on site and can come pre-set.

Common applications include power packs, mobile hydraulics, water systems, hydraulics generally and pneumatics.

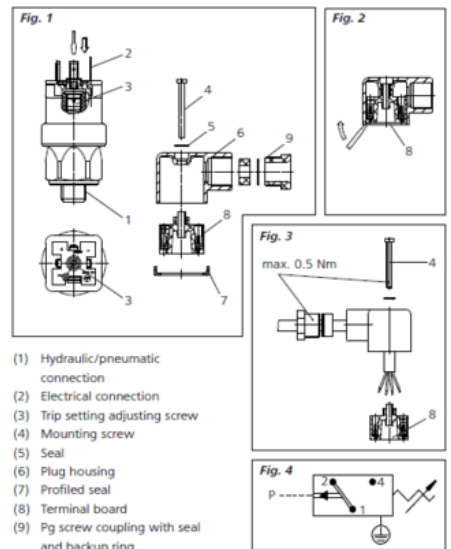
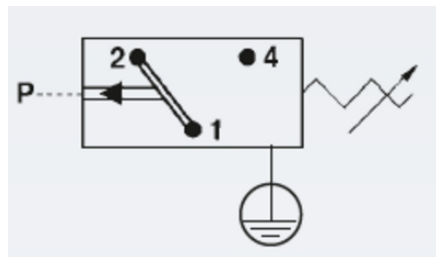
SPECIFICATIONS

Adjustment range max	1.5
Adjustment range min	0.3
Approvals	CSA US, RoHS II
Contact load max ac	4
Contact load max dc	0.25
Deviation max	±0,2
IP Class	IP65
Max switching frequency/min	200
Max. pressure	100
Temperature ambient from	-20
Temperature ambient to	80
Temperature range of media from	-30
Temperature range of media to	100

Voltage AC / DC Max	250
Voltage AC / DC Min	10
Weight	130



- (1) Hydraulic/pneumatic connection
- (2) Electrical connection
- (3) Trip setting adjusting screw
- (4) Mounting screw
- (5) Seal
- (6) Plug housing
- (7) Profiled seal
- (8) Terminal board
- (9) Pg screw coupling with seal and backup ring



- (1) Hydraulic/pneumatic connection
- (2) Electrical connection
- (3) Trip setting adjusting screw
- (4) Mounting screw
- (5) Seal
- (6) Plug housing
- (7) Profiled seal
- (8) Terminal board
- (9) Pg screw coupling with seal and backup ring