

VALCO - SIDE MOUNT LEVEL SWITCH- ML SERIES

00.0002.5910

53mm length, PVDF, NC/NO, 3M cable, Max 6 bar

- Polypropylene or PVDF materials
- Working pressure up to 6 bar
- Working temperature up to 130°C
- Reed switch SPST or SPDT
- IP65 Protection class



Product description

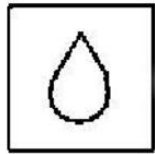
The ML series level switches are a simple, reliable and economic solution for the control of level in applications where space and ease of installation are compulsory.

Specifications

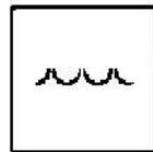
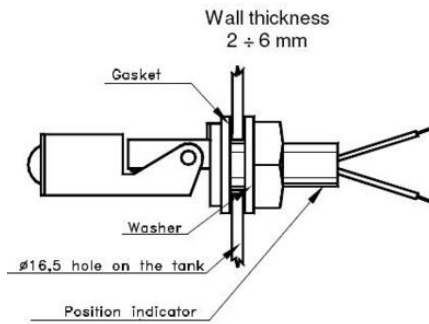
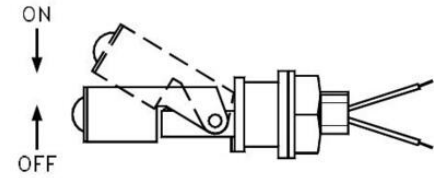
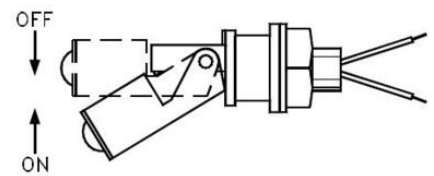
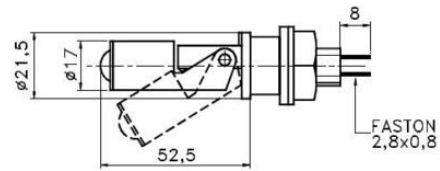
Current	0.5AC/0.7DC
Electrical connection	Pre-cabled 3m
Function	N/O & N/C
Manufacturer Part No	S1.FML.3D.GC-.Z.C2
Material of seals	FKM
Materials Wetted Parts	PVDF
Max. pressure	6
Mounting	Horizontal
Specific gravity	0.75
Temperature range to	130
Voltage	300AC/350DC



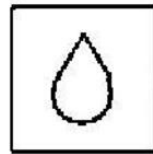
Water



Oil



Water



Oil

