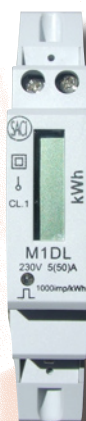


ENERGY COUNTERS



M1DL

LED

5 + 2

1

No

M2DL

LED

5 + 1

2 (partial and total)

Yes (in the partial)

M1DM

Electromechanical

5 + 1

1

No

M2DM

Electromechanical

5 + 1

1

No

MODEL

Display

N° of digits

N° of counters

Reset

CURRENT INPUT

IB (IMAX)

Consumption

Measuring range

Starting current

5(50) A

< 1 VA

0... 100 % IMAX

< 0.4 % Ib

5(80) A

< 1 VA

0... 100 % IMAX

< 0.4 % Ib

5(50) A

< 1 VA

0... 100 % IMAX

< 0.4 % Ib

5(80) A

< 1 VA

0... 100 % IMAX

< 0.4 % Ib

VOLTAGE INPUT

Nominal voltage (Un)

Consumption

Frequency

230 V A.C. ± 30%

<8 VA, 2W

50 ... 60 Hz

230 V A.C. ± 30%

<8 VA, 2W

50 ... 60 Hz

230 V A.C. ± 30%

<8 VA, 2W

50 ... 60 Hz

230 V A.C. ± 30%

<8 VA, 2W

50 ... 60 Hz

PULSE OUTPUT

N° of outputs

Pulse weight

Type

Supply

Maximum current

Voltage

Pulse length

Insulation

1

1000 pulses / kWh

SO DIN 43864 by Opto.

external

50 mA

5... 48 V D.C.

70 ms.

3 kV, 1 min.

1

1000 pulses / kWh

SO DIN 43864 by Opto.

external

50 mA

5... 48 V D.C.

70 ms.

3 kV, 1 min.

1

1000 pulses / kWh

SO DIN 43864 by Opto.

external

50 mA

5... 48 V D.C.

70 ms.

3 kV, 1 min.

1

1000 pulses / kWh

SO DIN 43864 by Opto.

external

50 mA

5... 48 V D.C.

70 ms.

3 kV, 1 min.

OPERATION FEATURES

Class

Operating temperature

Energy indicator (LED)

1 (EN 62053)

-20 ... +60 °C

1000 pulses / kWh

1 (EN 62053)

-20 ... +60 °C

1000 pulses / kWh

1 (EN 62053)

-20 ... +60 °C

1000 pulses / kWh

1 (EN 62053)

-20 ... +60 °C

1000 pulses / kWh

CONSTRUCTIVE FEATURES

Case

Mounting

Sealable connection terminals

Max. cable section:

Current and voltage inputs

Pulse and neutral inputs

DIN 1 module

DIN RAIL 35 mm.

YES

12mm²

12 mm²

DIN 2 modules

DIN RAIL 35 mm.

YES

24 mm²

12 mm²

DIN 1 module

DIN RAIL 35 mm.

YES

12mm²

12 mm²

DIN 2 modules

DIN RAIL 35 mm.

YES

24 mm²

12 mm²

